



Estate Agency, Letting Agency & Property Maintenance

LARN Number 1906034

T: 01563 531122 E: kilmarnock@glowhomeslettingandsales.com

37 John Finnie Street, Kilmarnock, KA1 1BL

47-49 Vernon Street, Saltcoats, KA21 5HE



WWW.GLOWHOMESLETTINGANDSALES.COM

Price On Request Wordie Road, Stirling, FK7



- Semi detached villa
- Three double bedrooms
- Two reception rooms
- Modern fitted kitchen
- Master ensuite, wc and family bathroom
- Driveway and garage
- Private back garden
- Sought after location

67 Wordie Road is presented to the market for sale by Glow Homes. This fantastic family home offers generous living accommodation over two floors and is located within a sought-after area.

On the ground floor of the villa there is a rear facing lounge overlooking the back garden with French doors leading onto a patio area, a modern fitted kitchen, separate

dining room (could be utilised in other ways to suit needs) a Cloakroom and an internal door to the garage. The kitchen comprises of white gloss units and a complimentary black worktop. The kitchen includes an integrated fridge and freezer, oven, hob & extractor hood. There is a rear access door from the kitchen to the back garden.

On the first floor there are three bedrooms, an ensuite shower room and a family bathroom. The master bedroom is a great size and has the added benefit of the ensuite shower room comprising of a wc, wash hand basin and shower cubicle. Bedroom two and three are both generously sized and can easily accommodate all required bedroom furniture. The family bathroom comprises of a wc, wash hand basin and bath with overhead shower.

To the front of the property there is a large driveway which can accommodate parking for two vehicles and there is access to the integral garage. The garden to the rear is fully enclosed with fencing and has a patio area for outdoor furniture and the remaining garden is laid with decorative chips.

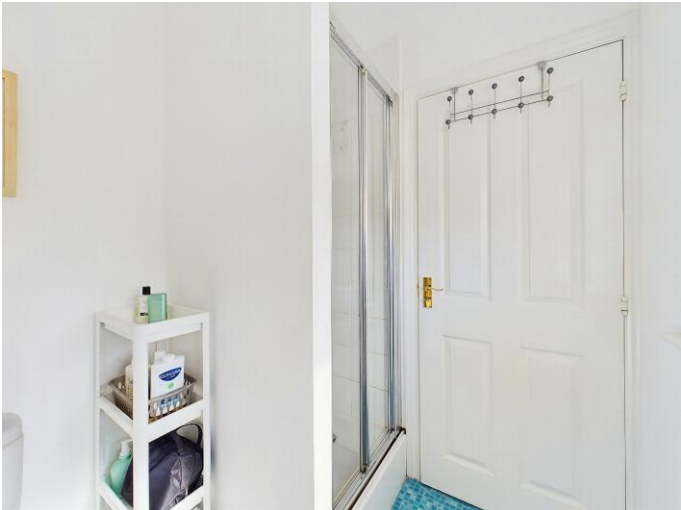
Overall, this is a fabulous family home located within a popular residential area and is sure to appeal to all types of buyers!

Home Report available on request.

Wordie Road, Stirling, FK7

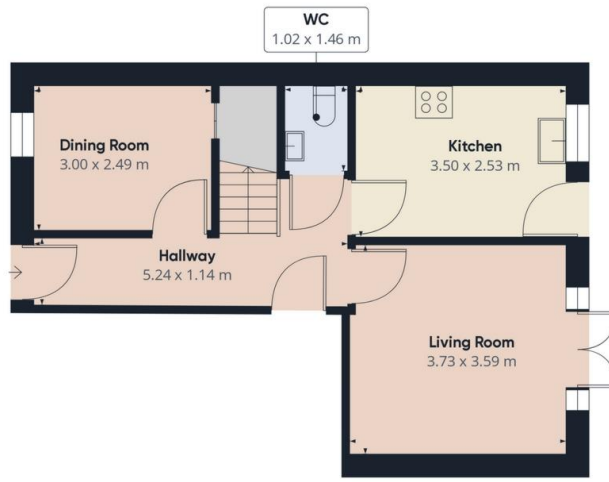
-
-
-





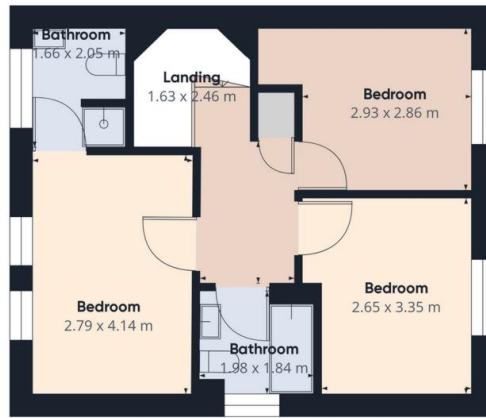






Floor 0

Approximate total area⁽¹⁾
82.93 m²



Floor 1

(1) Excluding balconies and terraces

While every attempt has been made to ensure accuracy, all measurements are approximate, not to scale. This floor plan is for illustrative purposes only.

Calculations are based on RICS IPMS 3C standard.

GIRAFFE360

Directions

Location



VIEWING BY APPOINTMENT WITH AGENTS GLOW HOMES AYRSHIRE

37 John Finnie St, Kilmarnock, KA1 1BL T: 01563 531122 E: kilmarnock@glowhomeslettingandsales.com W: <http://www.glowhomeslettingandsales.com/>

General: While we endeavour to make our sales particulars fair, accurate and reliable, they are only a general guide to the property and, accordingly, if there is any point which is of particular importance to you, please contact the office and we will be pleased to check the position for you, especially if you are contemplating travelling some distance to view the property.

Measurements: These approximate room sizes are only intended as general guidance. You must verify the dimensions carefully before ordering carpets or any built-in furniture.

Services: Please note we have not tested the services or any of the equipment or appliances in this property, accordingly we strongly advise prospective buyers to commission their own survey or service reports before finalizing their offer to purchase.

THESE PARTICULARS ARE ISSUED IN GOOD FAITH BUT DO NOT CONSTITUTE REPRESENTATIONS OF FACT OR FORM PART OF ANY OFFER OR CONTRACT. THE MATTERS REFERRED TO IN THESE PARTICULARS SHOULD BE INDEPENDENTLY VERIFIED BY PROSPECTIVE BUYERS OR TENANTS. NEITHER GLOW HOMES AYRSHIRE NOR ANY OF ITS EMPLOYEES OR AGENTS HAS ANY AUTHORITY TO MAKE OR GIVE ANY REPRESENTATION OR WARRANTY WHATEVER IN RELATION TO THIS PROPERTY.

YOUR HOME IS AT RISK IF YOU DO NOT KEEP UP REPAYMENTS ON A MORTGAGE OR OTHER LOAN SECURED ON IT.

Written quotations available on request. All loans secured on property. Life assurance is usually required.