



Estate Agency, Letting Agency & Property Maintenance

LARN Number 1906034

T: 01563 531122 E: kilmarnock@glowhomeslettingandsales.com

37 John Finnie Street, Kilmarnock, KA1 1BL

47-49 Vernon Street, Saltcoats, KA21 5HE



WWW.GLOWHOMESLETTINGANDSALES.COM

Offers Over £90,000 Culzean Crescent, Kilmarnock, KA3



- First floor flat
- Two double bedrooms
- Spacious lounge
- Freshly plastered and painted
- Stylish kitchen & bathroom
- New boiler
- Private driveway
- Large private garden
- Sought after area

23 Culzean Crescent is a fabulous first floor flat available for sale now with Glow Homes. It is situated within a highly sought-after area and has been stylishly designed to suit today's modern buyer.

The flat is accessed via a side entrance and has a flight of stairs leading to the upstairs landing. From here you can access all of the living accommodation. The spacious lounge is front facing and is neutral in decor. The trendy kitchen is located to

the rear and comprises of matte grey units and a complimentary wood effect worktop. Included in the kitchen is an integrated electric oven, hob and extractor hood. The kitchen overlooks the back garden.

There are two bedrooms, both of which are generously sized and have fitted wardrobes. The brand new shower room has contemporary wet wall panelling and comprises of a WC, wash hand basin and corner shower unit.

This property has recently had new plaster work, has been painted, new boiler fitted, new bathroom fitted and other upgrades.

There is a private driveway running down the side of the block which can accommodate off street parking for several vehicles. The exclusive garden is to the rear and is fully enclosed. The large grounds could be utilised in many ways and is a great space to enjoy outdoor dining and socialising. There is a currently a large unit in the garden which could easily be converted into a garden room if desired.

Culzean Crescent is in a popular, sought-after area of Kilmarnock and is within an easy walking distance of the town centre, public transport and local amenities.

Early viewing is highly recommended!

Culzean Crescent, Kilmarnock, KA3

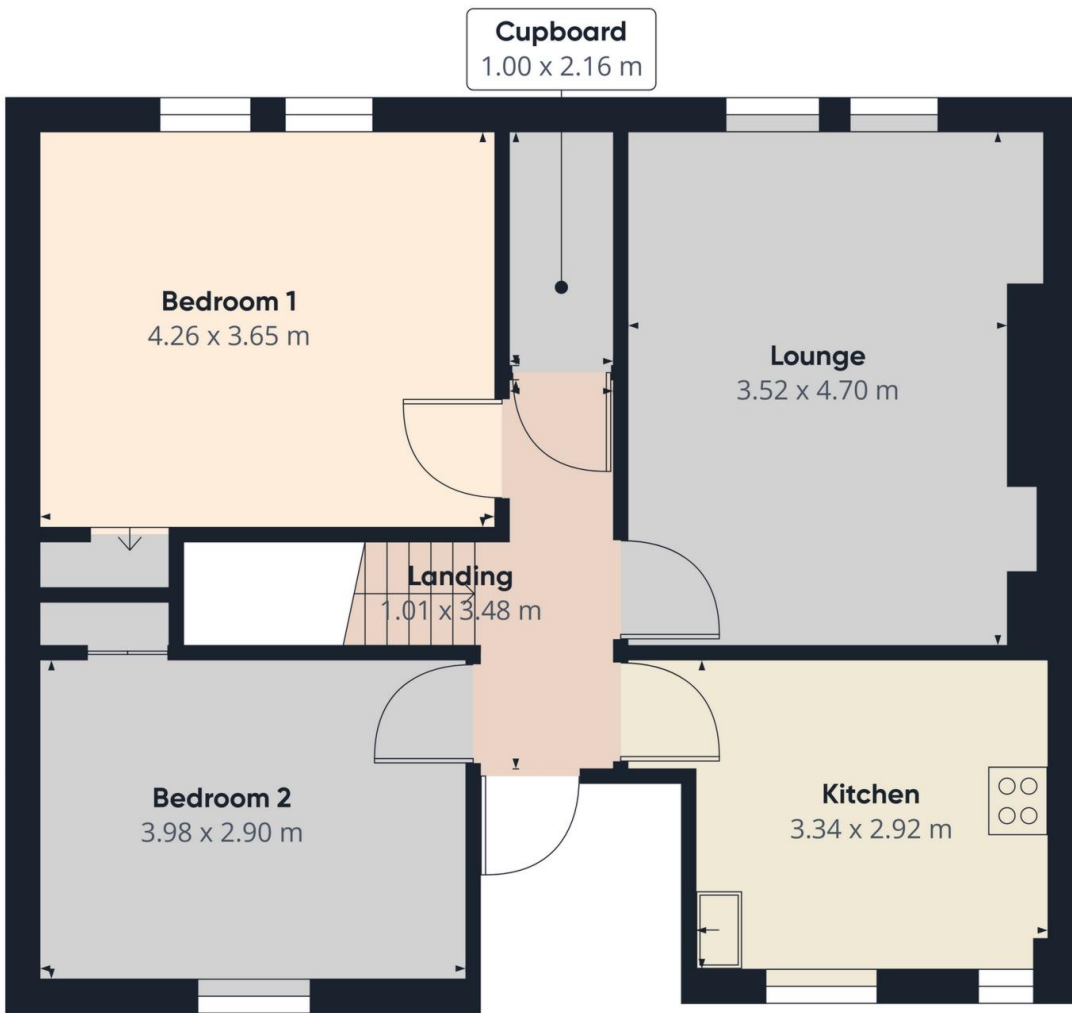
-
-
-











Approximate total area⁽¹⁾
63.15 m²

(1) Excluding balconies and terraces

While every attempt has been made to ensure accuracy, all measurements are approximate, not to scale. This floor plan is for illustrative purposes only.

GIRAFFE360

Directions

Location



VIEWING BY APPOINTMENT WITH AGENTS GLOW HOMES AYRSHIRE

37 John Finnie St, Kilmarnock, KA1 1BL T: 01563 531122 E: kilmarnock@glowhomeslettingandsales.com W: <http://www.glowhomeslettingandsales.com/>

General: While we endeavour to make our sales particulars fair, accurate and reliable, they are only a general guide to the property and, accordingly, if there is any point which is of particular importance to you, please contact the office and we will be pleased to check the position for you, especially if you are contemplating travelling some distance to view the property.

Measurements: These approximate room sizes are only intended as general guidance. You must verify the dimensions carefully before ordering carpets or any built-in furniture.

Services: Please note we have not tested the services or any of the equipment or appliances in this property, accordingly we strongly advise prospective buyers to commission their own survey or service reports before finalizing their offer to purchase.

THESE PARTICULARS ARE ISSUED IN GOOD FAITH BUT DO NOT CONSTITUTE REPRESENTATIONS OF FACT OR FORM PART OF ANY OFFER OR CONTRACT. THE MATTERS REFERRED TO IN THESE PARTICULARS SHOULD BE INDEPENDENTLY VERIFIED BY PROSPECTIVE BUYERS OR TENANTS. NEITHER GLOW HOMES AYRSHIRE NOR ANY OF ITS EMPLOYEES OR AGENTS HAS ANY AUTHORITY TO MAKE OR GIVE ANY REPRESENTATION OR WARRANTY WHATEVER IN RELATION TO THIS PROPERTY.

YOUR HOME IS AT RISK IF YOU DO NOT KEEP UP REPAYMENTS ON A MORTGAGE OR OTHER LOAN SECURED ON IT.

Written quotations available on request. All loans secured on property. Life assurance is usually required.