



Estate Agency, Letting Agency & Property Maintenance

LARN Number 1906034

T: 01563 531122 E: kilmarnock@glowhomeslettingandsales.com

37 John Finnie Street, Kilmarnock, KA1 1BL

47-49 Vernon Street, Saltcoats, KA21 5HE



WWW.GLOWHOMESLETTINGANDSALES.COM

Offers Over £85,000 Cessnock Place, Kilmarnock, KA1



- Semi detached villa
- Three bedrooms
- Spacious lounge
- Large kitchen and Utility Room
- Driveway for several vehicles
- Sought after location
- In need of modernising
- Great potential
- Council Tax Band B

1 Cessnock Place in Bellfield, Kilmarnock is a substantial semi-detached villa offered to the market for sale by Glow Homes. The property requires modernising but has great potential to be a fabulous family home!

On entering at the front, the hallway provides access to the lounge, kitchen and stairs to the first floor. The spacious lounge runs the length of the house and has windows to both ends allowing for plenty of natural light to flood the room. The kitchen is a great size and has a large walk-in cupboard. Off the kitchen there is a room which could be utilised to suit individual needs, but it is ideally situated for a utility room or downstairs wc. There is an access door here as well to the side garden.

On the first floor there are three bedrooms and a bathroom.

This property benefits from having extensive grounds with it. Currently to the front, the garden is laid with decorative chips. The larger than average driveway runs up the side of the house and can easily accommodate off street parking for several vehicles. The garden to the rear has a drying area which is chipped, a lawn area beyond that and there is a wooden garage and shed in the garden.

The villa needs modernising throughout but it is generously sized and in a sought after location so it is sure to appeal to all buyers!

Home Report available on request.

Cessnock Place, Kilmarnock, KA1

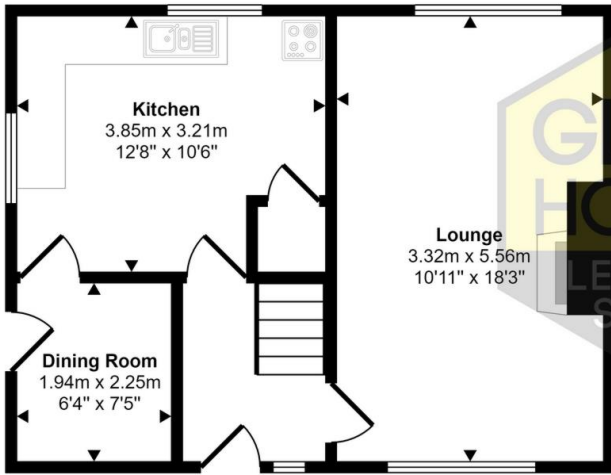
-
-
-



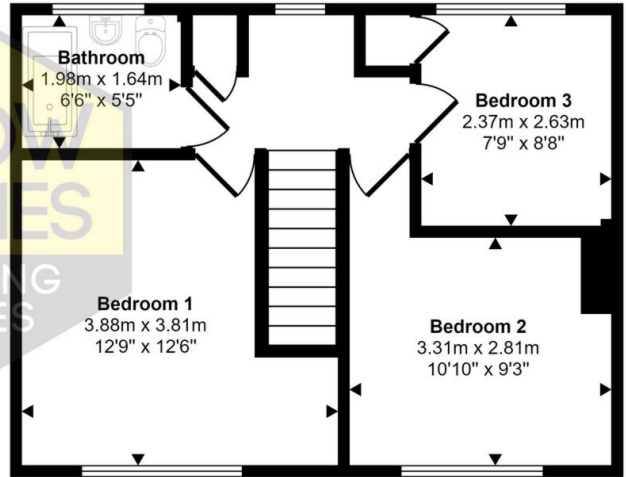




Approx Gross Internal Area
82 sq m / 884 sq ft



Ground Floor
Approx 41 sq m / 441 sq ft



First Floor
Approx 41 sq m / 443 sq ft

This floorplan is only for illustrative purposes and is not to scale. Measurements of rooms, doors, windows, and any items are approximate and no responsibility is taken for any error, omission or mis-statement. Icons of items such as bathroom suites are representations only and may not look like the real items. Made with Made Snappy 360.

Directions

Location



VIEWING BY APPOINTMENT WITH AGENTS GLOW HOMES AYRSHIRE

37 John Finnie St, Kilmarnock, KA1 1BL T: 01563 531122 E: kilmarnock@glowhomeslettingandsales.com W: <http://www.glowhomeslettingandsales.com/>

General: While we endeavour to make our sales particulars fair, accurate and reliable, they are only a general guide to the property and, accordingly, if there is any point which is of particular importance to you, please contact the office and we will be pleased to check the position for you, especially if you are contemplating travelling some distance to view the property.

Measurements: These approximate room sizes are only intended as general guidance. You must verify the dimensions carefully before ordering carpets or any built-in furniture.

Services: Please note we have not tested the services or any of the equipment or appliances in this property, accordingly we strongly advise prospective buyers to commission their own survey or service reports before finalizing their offer to purchase.

THESE PARTICULARS ARE ISSUED IN GOOD FAITH BUT DO NOT CONSTITUTE REPRESENTATIONS OF FACT OR FORM PART OF ANY OFFER OR CONTRACT. THE MATTERS REFERRED TO IN THESE PARTICULARS SHOULD BE INDEPENDENTLY VERIFIED BY PROSPECTIVE BUYERS OR TENANTS. NEITHER GLOW HOMES AYRSHIRE NOR ANY OF ITS EMPLOYEES OR AGENTS HAS ANY AUTHORITY TO MAKE OR GIVE ANY REPRESENTATION OR WARRANTY WHATEVER IN RELATION TO THIS PROPERTY.

YOUR HOME IS AT RISK IF YOU DO NOT KEEP UP REPAYMENTS ON A MORTGAGE OR OTHER LOAN SECURED ON IT.

Written quotations available on request. All loans secured on property. Life assurance is usually required.