



3 Stradbroke Road, Pakefield

Lowestoft



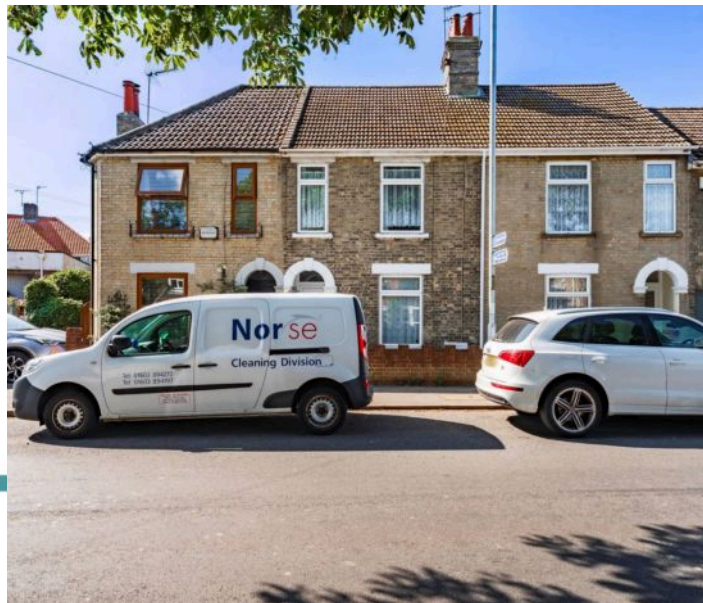
Guide Price £180,000  
Minors & Brady



## 3 Stradbroke Road

Pakefield, Lowestoft

- Guide price £180,000-£190,000
- Chain free
- Mid-terrace residence positioned in the coastal area of Pakefield, Lowestoft
- Perfect first home or investment purchase
- Open-plan sitting/dining room filled with natural light, inviting relaxation and entertaining
- Kitchen equipped with cabinetry, a freestanding oven and under-counter areas for appliances
- Sun room/utility creating additional storage space for laundry appliances and outdoor wear
- Ground floor bathroom comprising of a four-piece suite
- Three off-landing bedrooms
- A private, well-maintained garden featuring a patio area and planted borders
- On-road parking available, with the potential for off-road parking at the rear



M&B





M&B



## 3 Stradbroke Road

Pakefield, Lowestoft

Council Tax band: A

Tenure: Freehold

EPC Energy Efficiency Rating: D

EPC Environmental Impact Rating:





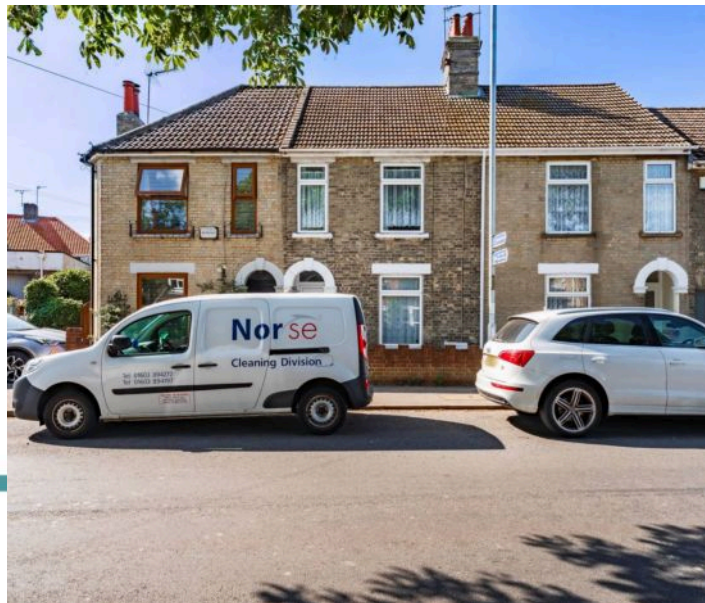
## 3 Stradbroke Road

Pakefield, Lowestoft

Stradbroke Road is a well-situated residential street in the popular coastal suburb of Pakefield, Lowestoft. It lies just a short walk from the picturesque Pakefield Beach, offering residents easy access to the seafront and cliff-top walks. The area blends seaside charm with practical convenience, with a number of local amenities nearby. A Co-op Food store and a Boots pharmacy provide essential shopping and healthcare, while independent cafés, takeaways, and pubs—such as The Tramways and The Ship Inn—create a vibrant local atmosphere. Families are well-served by education facilities, with Pakefield Primary School and Pakefield High School both within comfortable walking distance. Healthcare needs are met by local GP surgeries and dental clinics within the surrounding area. Transport links are excellent, with frequent bus services running along London Road South connecting to central Lowestoft, Oulton Broad, and further afield. The nearby A12 offers direct road access to Norwich and Ipswich, while Lowestoft railway station and Oulton Broad South station provide regular train services.

### Stradbroke Road

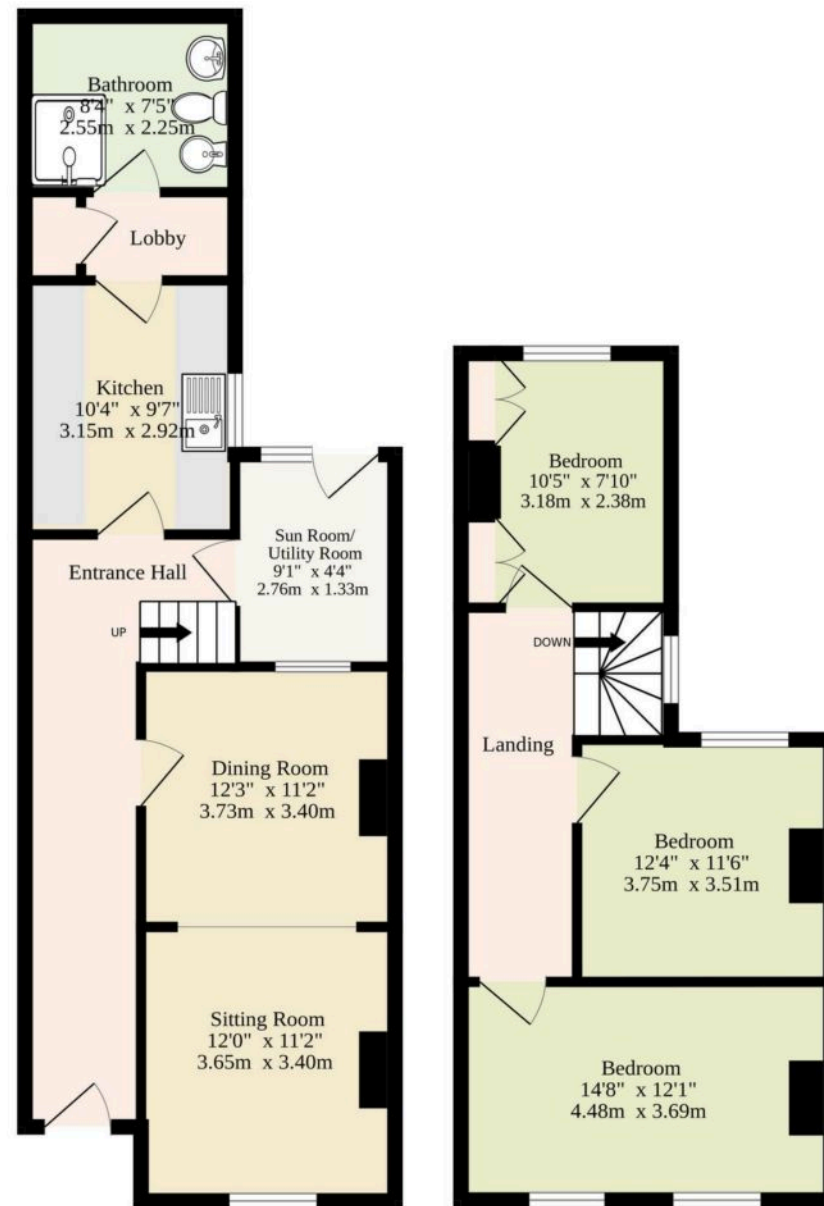
Step inside to discover a bright and airy entrance hall, that leads into a spacious open-plan sitting and dining room, where large windows allow natural light to pour in, creating a bright and inviting atmosphere—perfect for both everyday living and entertaining guests. The adjoining kitchen offers a practical layout, fitted with cabinetry, a freestanding oven, and dedicated under-counter spaces for essential appliances.



M&B

Ground Floor  
770 sq.ft. (71.5 sq.m.) approx.

1st Floor  
561 sq.ft. (52.1 sq.m.) approx.



TOTAL FLOOR AREA : 1330 sq.ft. (123.6 sq.m.) approx.

Whilst every attempt has been made to ensure the accuracy of the floorplan contained here, measurements of doors, windows, rooms and any other items are approximate and no responsibility is taken for any error, omission or mis-statement. This plan is for illustrative purposes only and should be used as such by any prospective purchaser. The services, systems and appliances shown have not been tested and no guarantee as to their operability or efficiency can be given.  
Made with Metropix ©2025



# Dreaming of this home? Let's make it a reality



Meet *Macey*  
Branch Manager



Meet *Bradley*  
Property Valuer



Meet *Hannah*  
Property Consultant

Minors & Brady  
*Your home, our market*



[oultonbroad@minorsandbrady.co.uk](mailto:oultonbroad@minorsandbrady.co.uk)



01502 447788



Ivy Lane, Oulton Broad, NR33 8QH

CAISTER-ON-SEA | DEREHAM | DISS | NORWICH | OULTON BROAD | WROXHAM



## How can we support

- ✓ Residential Mortgages
- ✓ Protection & Insurance
- ✓ Buy-to-let (personal and limited company)



**Matt Waters**  
Senior Mortgage  
and Protection Advisor



**Victoria Payne**  
Mortgage and  
Protection Advisor

Scan to book your  
appointment today



T: 01692 531372  
E: [enquiries@norfolk-mortgages.co.uk](mailto:enquiries@norfolk-mortgages.co.uk)