



Bay Tree Cottage, Colville Road, Lowestoft

Offers Over £180,000

Bay Tree Cottage, Colville Road

Lowestoft, Lowestoft

Introducing this remarkable opportunity to acquire this end-of-terrace house in South Lowestoft, just on the cusp of Oulton Broad. This two double-bedroom home features two spacious reception rooms, a double garage, and a driveway, offering both privacy and potential. With the added advantage of no onward chain, this property presents a fantastic opportunity for renovation, allowing you to create your dream home. Additionally, with lapsed planning permission for a three-bedroom detached home, the possibilities are endless.

Council Tax band: B

Tenure: Freehold

EPC Energy Efficiency Rating: E

EPC Environmental Impact Rating: D





Bay Tree Cottage, Colville Road

Lowestoft, Lowestoft

Introducing this remarkable opportunity to acquire this end-of-terrace house in South Lowestoft, just on the cusp of Oulton Broad. This two double-bedroom home features two spacious reception rooms, a double garage, and a driveway, offering both privacy and potential. With the added advantage of no onward chain, this property presents a fantastic opportunity for renovation, allowing you to create your dream home. Additionally, with lapsed planning permission for a three-bedroom detached home, the possibilities are endless.

Location

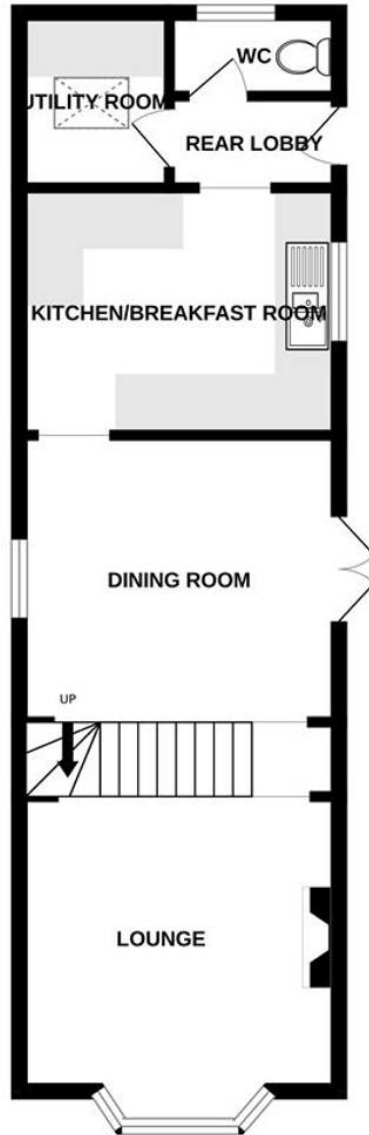
Colville Road, located in Lowestoft, offers a prime residential setting with easy access to a variety of local amenities. The area is well-served by schools, parks, and shops, ensuring convenience for families and individuals alike. Lowestoft's stunning coastline, with its sandy beaches and vibrant promenade, is just a short distance away, providing opportunities for leisure and recreation. The road benefits from excellent transport links, including regular bus services and proximity to the A12, making it easy to commute to nearby towns and cities. Additionally, the bustling town centre of Lowestoft is within reach, featuring a diverse range of retail, dining, and entertainment options, enhancing the appeal of this desirable location.

Colville Road, Lowestoft

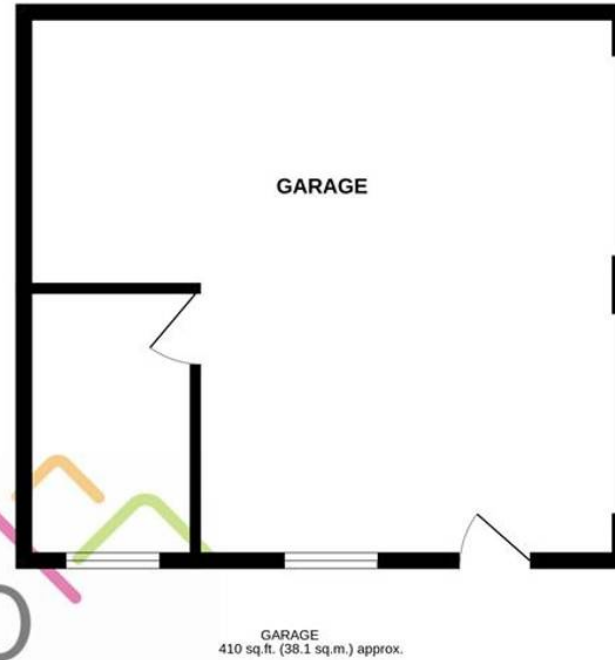
As you enter this charming home, you are greeted by the inviting front room. This space overlooks the front of the property and features exposed



GROUND FLOOR
435 sq.ft. (40.4 sq.m.) approx.



1ST FLOOR
315 sq.ft. (29.3 sq.m.) approx.



BAY TREE COTTAGE, COLVILLE ROAD, LOWESTOFT

TOTAL FLOOR AREA : 1160 sq.ft. (107.8 sq.m.) approx.

Whilst every attempt has been made to ensure the accuracy of the floorplan contained here, measurements of doors, windows, rooms and any other items are approximate and no responsibility is taken for any error, omission or mis-statement. This plan is for illustrative purposes only and should be used as such by any prospective purchaser. The services, systems and appliances shown have not been tested and no guarantee as to their operability or efficiency can be given.
Made with Metropix ©2024

