



97 Beccles Road, Lowestoft
£180,000

97 Beccles Road

Lowestoft, Lowestoft

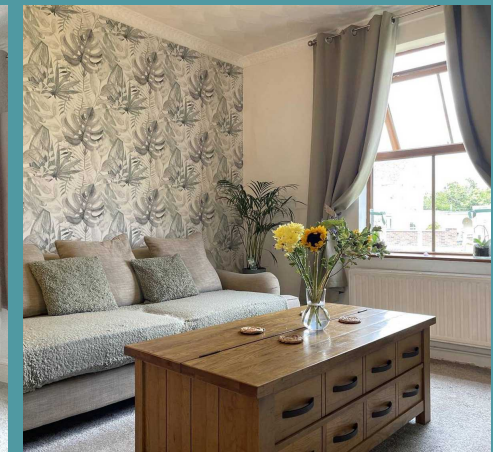
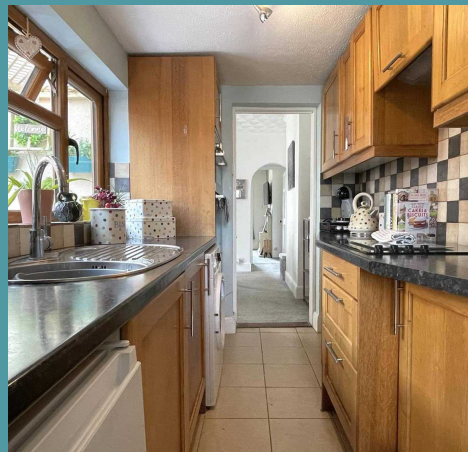
Nestled in the desirable locale of South Oulton Broad, this charming three-bedroom end-of-terrace house is a rare find in today's market. An attractive prospect for first-time buyers and astute investors alike, this well-appointed property offers a wealth of opportunities and convenience. This home is a delightful combination of comfort, functionality, and location.

Council Tax band: A

Tenure: Freehold

EPC Energy Efficiency Rating: D

EPC Environmental Impact Rating: D





97 Beccles Road

Lowestoft, Lowestoft

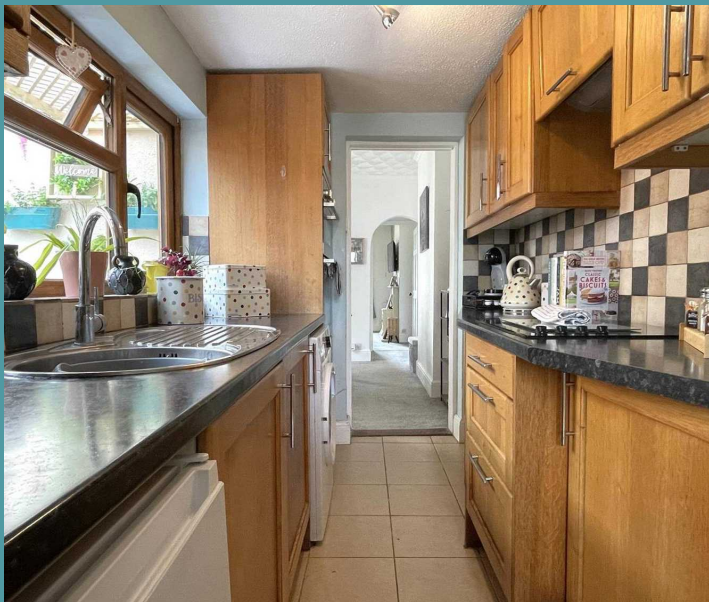
Nestled in the desirable locale of South Oulton Broad, this charming three-bedroom end-of-terrace house is a rare find in today's market. An attractive prospect for first-time buyers and astute investors alike, this well-appointed property offers a wealth of opportunities and convenience. This home is a delightful combination of comfort, functionality, and location.

Location

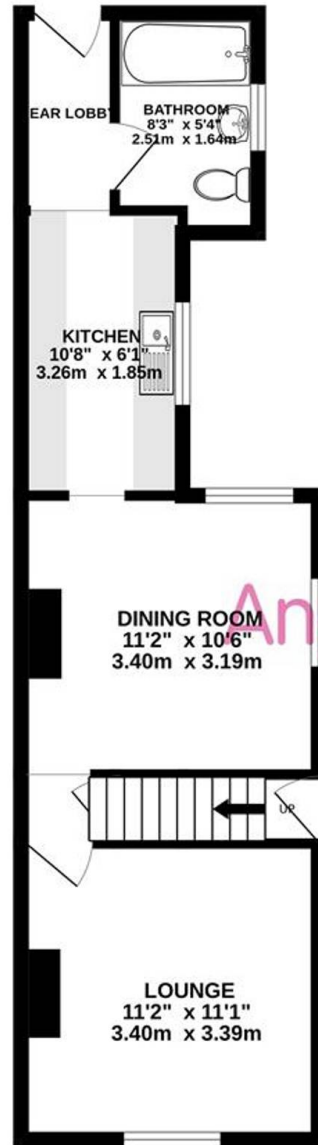
Situated in the charming coastal town of Lowestoft, Beccles Road offers a perfect blend of convenience and serene living. This property is ideally located, just minutes from the stunning sandy beaches and vibrant seafront that Lowestoft is known for. With local amenities such as shops, cafes, and restaurants within walking distance, everyday conveniences are right at your doorstep. The property is well-connected by public transport, making it easy to explore nearby attractions, including Oulton Broad, a popular spot for water sports and scenic walks. The area boasts reputable schools, parks, and community facilities, making it an ideal choice for families, couples, or anyone looking to enjoy the relaxed coastal lifestyle. Enjoy the best of both worlds—peaceful residential surroundings with easy access to the hustle and bustle of town life.

Beccles Road

Boasting a traditional yet versatile layout, the ground floor encompasses two generously sized reception rooms, a well-appointed kitchen, a convenient rear lobby, and a modern bathroom.



GROUND FLOOR
395 sq.ft. (36.7 sq.m.) approx.



1ST FLOOR
326 sq.ft. (30.3 sq.m.) approx.



BECCLLES ROAD, SOUTH OULTON BROAD, LOWESTOFT

TOTAL FLOOR AREA : 721 sq.ft. (67.0 sq.m.) approx.

Whilst every attempt has been made to ensure the accuracy of the floorplan contained here, measurements of doors, windows, rooms and any other items are approximate and no responsibility is taken for any error, omission or mis-statement. This plan is for illustrative purposes only and should be used as such by any prospective purchaser. The services, systems and appliances shown have not been tested and no guarantee as to their operability or efficiency can be given.
Made with Metropix ©2024

