



57 Elmdale Drive, Carlton Colville

Offers Over £240,000

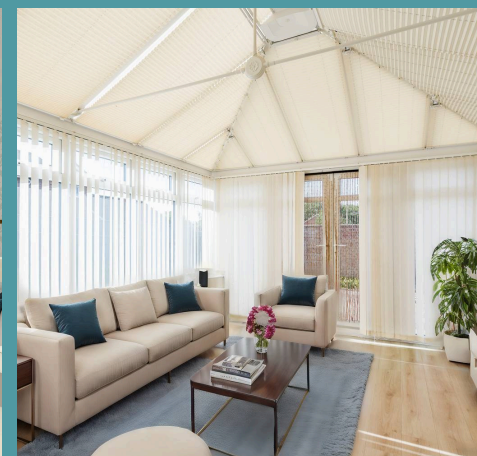
57 Elmdale Drive

Carlton Colville, Lowestoft

OPEN DAY 12TH OCTOBER - CALL TO BOOK. This impressive two-bedroom detached house, located in a sought-after area of Carlton Colville, offers a comfortable and inviting living space spread across two well-appointed storeys. The property is currently vacant offering a blank canvas for the next owners to personalise to their taste, with possibility to extend (STRPP)

Council Tax band: C

Tenure: Freehold





57 Elmdale Drive

Carlton Colville, Lowestoft

This impressive three-bedroom detached house, located in a sought-after area of Carlton Colville, offers a comfortable and inviting living space spread across two well-appointed storeys. The property is currently vacant offering a blank canvas for the next owners to personalise to their taste.

Location

Elmdale Drive in Carlton Colville is located in a tranquil and well-established residential area within Lowestoft, Suffolk. This setting offers a serene suburban atmosphere with easy access to local amenities, including schools, shops, and parks. The area benefits from good transport connections, facilitating straightforward travel to Lowestoft and beyond. Carlton Colville is recognised for its green spaces and proximity to nature reserves, providing ample opportunities for outdoor activities. The town also offers a variety of recreational facilities and community services, contributing to a high quality of life for its residents.

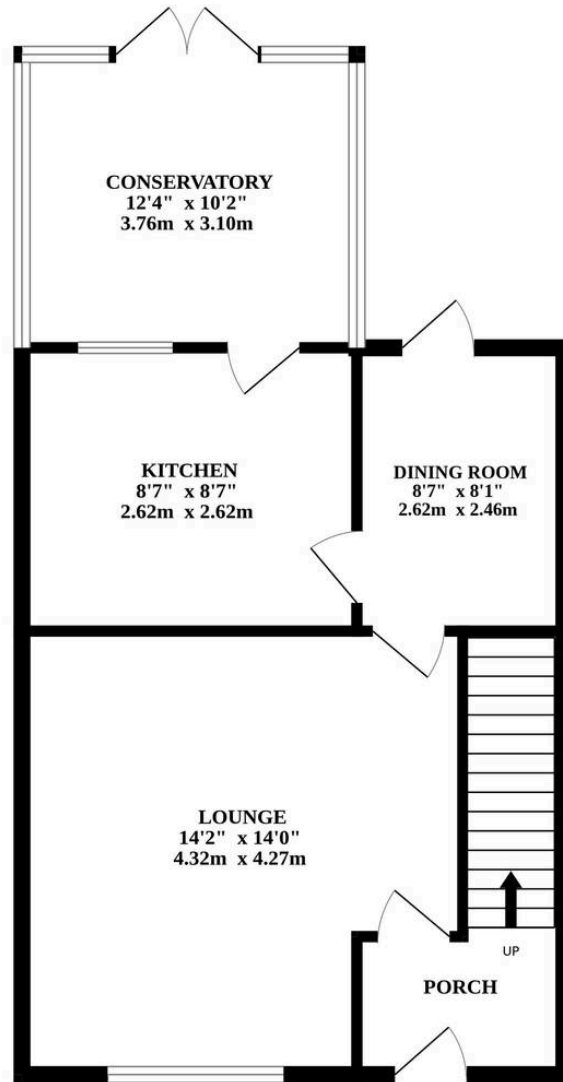
Elmdale Drive, Carlton Colville

On the ground floor, the property features three versatile reception rooms. The welcoming living room includes a fireplace and a stylish laminated wooden floor effect. The formal dining room has a door leading directly to the rear garden. The sunlit conservatory seamlessly connects to the garden, creating an ideal space for relaxation and entertaining.

The well-equipped kitchen is fitted with white



GROUND FLOOR



1ST FLOOR

