



EST. 1977

KEY DRUMMOND

ESTATE AGENTS



# Flat 6 Alton Heights 11 Alton Road

Lower Parkstone, Poole, BH14 8SL

£1,600 Per Month

 2  2  1  C

# Flat 6 Alton Heights 11 Alton Road



## Description

This two double bedroom, first floor apartment with a lift is situated in Lower Parkstone near Ashley Cross within walking distance to Parkstone train station with a direct line to London Waterloo.

The entrance hallway has a storage cupboard and leads to all of the rooms. The open plan living/kitchen/diner has large windows that offer glimpses of the sea.

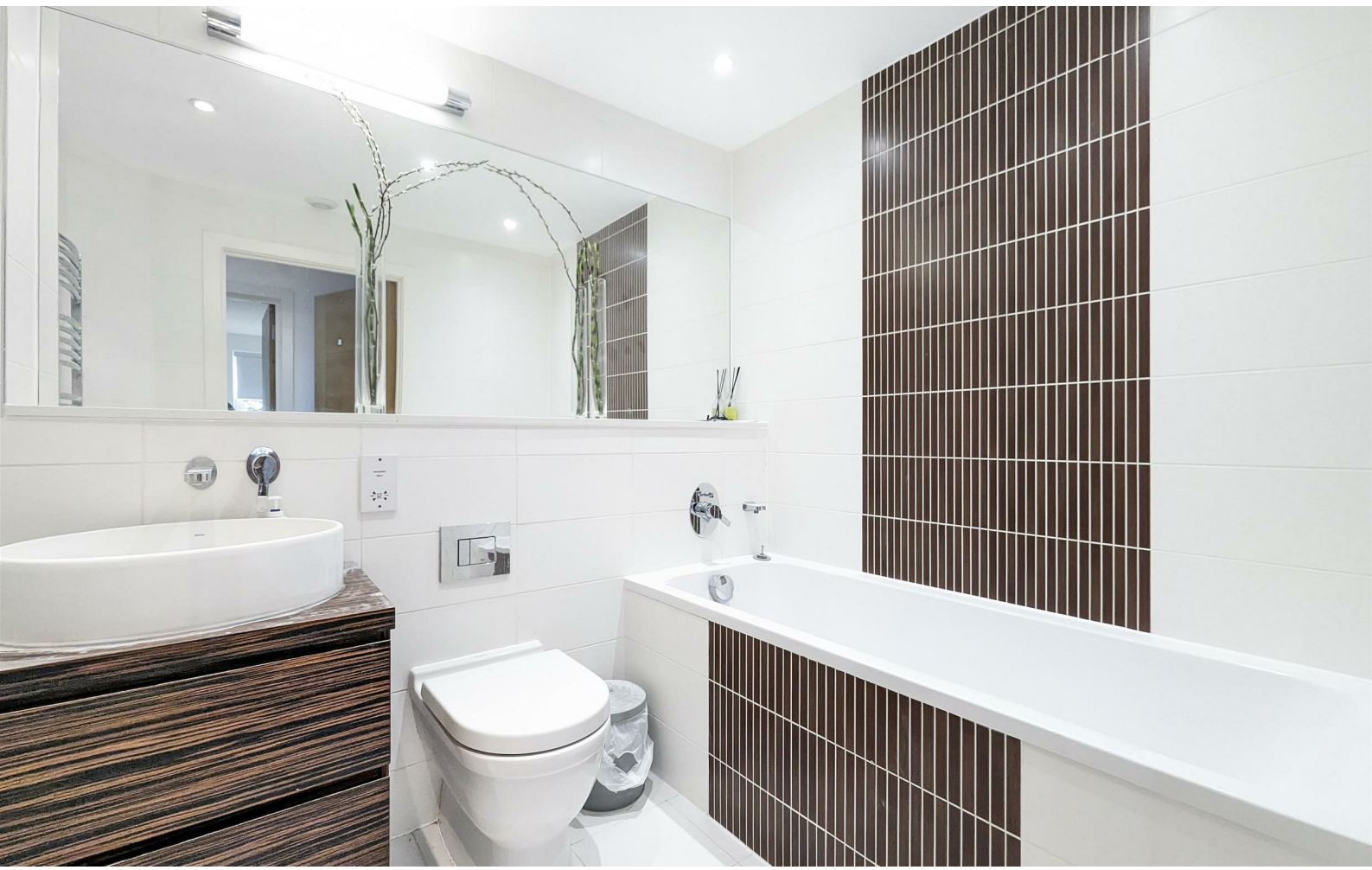
Both bedrooms are double rooms and the master benefits from a fitted wardrobe and an en suite shower room. The 2nd bedroom has a hanging rail in the alcove for wardrobe space and both bedrooms overlook the rear gardens. The main bathroom is modern and fully tiled.

The property has been recently redecorated throughout.

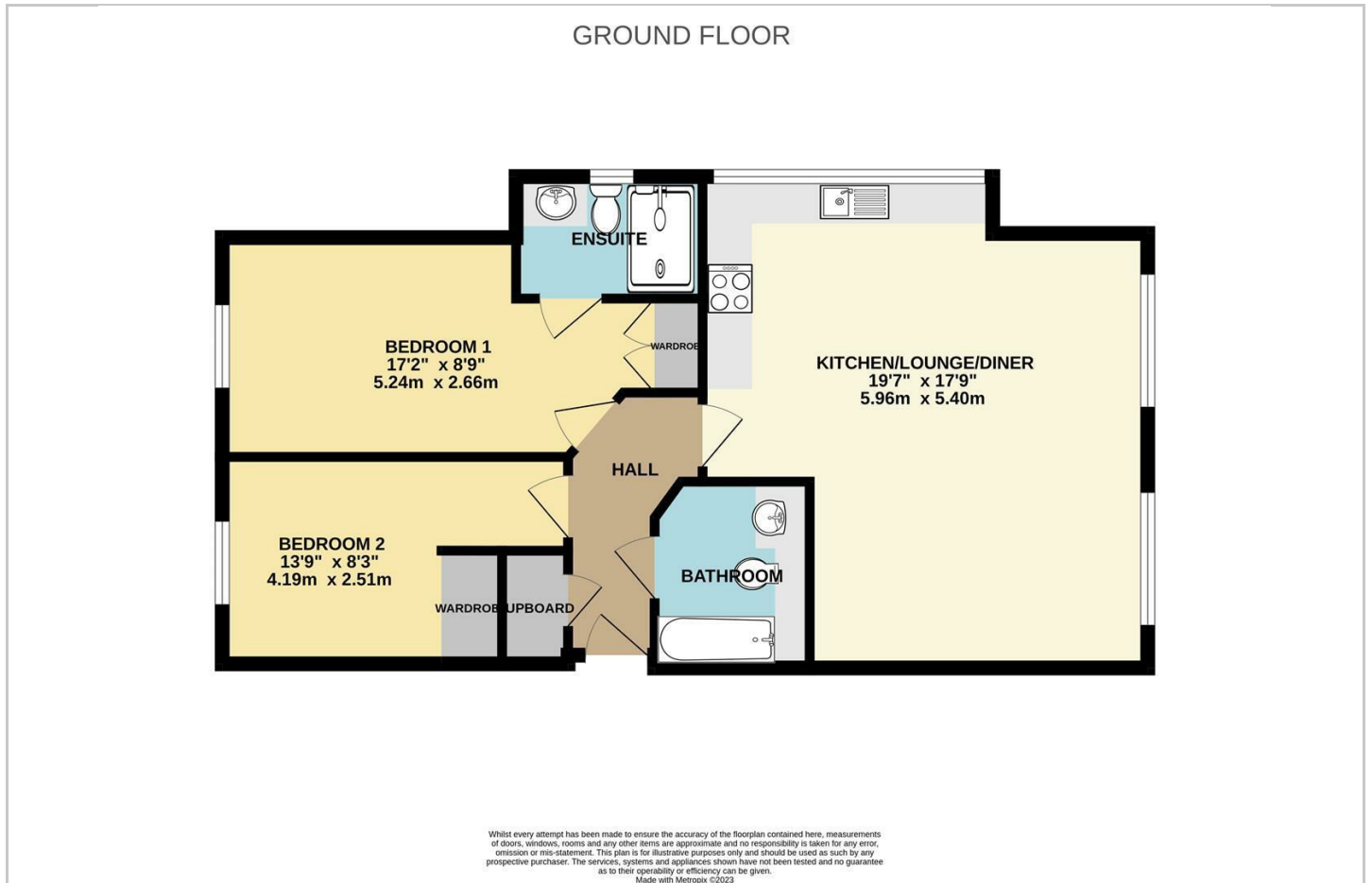
Outside, the communal gardens offer a place to unwind as well as allocated underground parking for one car and visitor spaces available on a first come first serve basis. Secure bike storage available.

- Two Double Bedrooms
- Lift
- Walking Distance to Train Station
- Recently Redecorated
- Master with En Suite
- Underground Parking
- Communal Gardens
- Open Plan Living

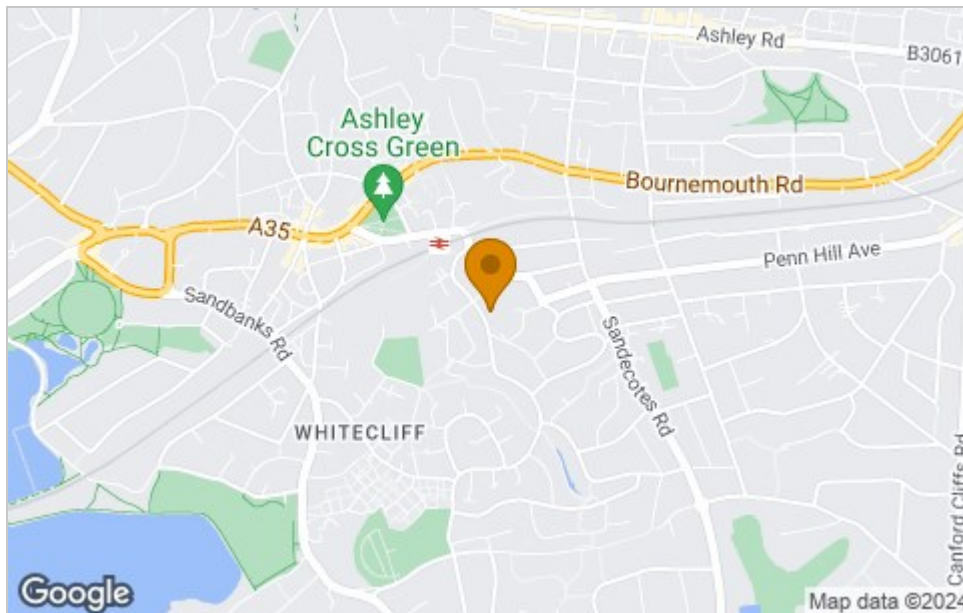




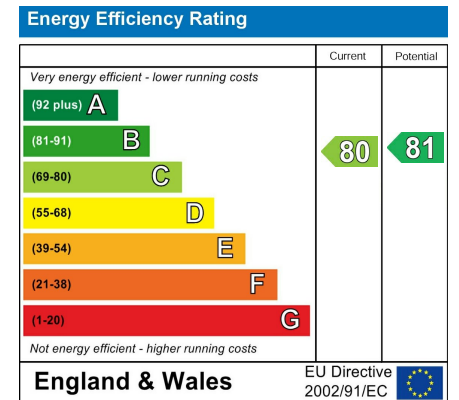
## Floor Plan



## Area Map



## Energy Efficiency Graph



## Viewing

Please contact our Key Drummond Lettings Office on 01202700888 if you wish to arrange a viewing appointment for this property or require further information.

These particulars, whilst believed to be accurate are set out as a general outline only for guidance and do not constitute any part of an offer or contract. Intending purchasers should not rely on them as statements of representation of fact, but must satisfy themselves by inspection or otherwise as to their accuracy. No person in this firm's employment has the authority to make or give any representation or warranty in respect of the property.