



8 Bramdean Crescent

, London, SE12 0NS

Guide price £500,000

Daniel Ford are pleased to present this 3 Bedroom House nestled in the charming neighbourhood of Bramdean Crescent, this delightful end-terrace house offers a perfect blend of comfort and character. Built in 1930, the property boasts a generous living space of 1,066 square feet, making it an ideal home for families or those seeking extra room to breathe.

Upon entering, you are welcomed into a spacious reception room, perfect for entertaining guests or enjoying quiet evenings with family. The house features three well-proportioned bedrooms, providing ample space for rest and relaxation. The layout is thoughtfully designed to maximise both space and light, creating a warm and inviting atmosphere throughout.

Bramdean Crescent is a sought-after location, known for its friendly community and proximity to local amenities. Residents will appreciate the easy access to shops, schools, and transport links, making commuting and daily errands a breeze.

This charming house presents a wonderful opportunity for those looking to settle in a vibrant area of London.

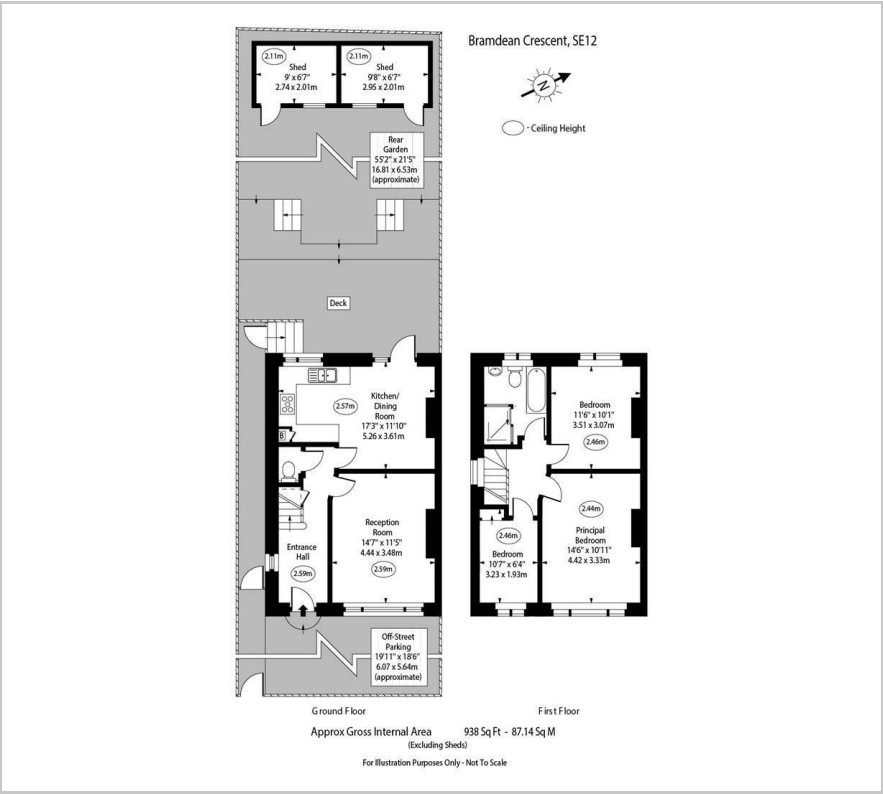
- 3 Bedrooms
- Family Bathroom plus downstairs WC
- Kitchen Diner
- Separate Living Room
- Large Garden
- Off Street Parking
- Chain Free

Viewing

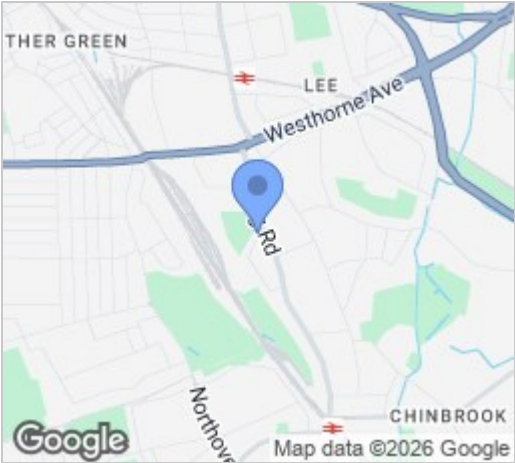
Please contact us on 020 3198 4517 if you wish to arrange a viewing appointment for this property or require further information.



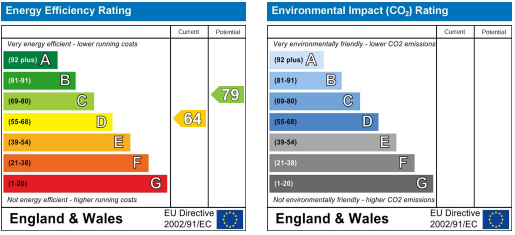
Floor Plan



Area Map



Energy Efficiency Graph



These particulars, whilst believed to be accurate are set out as a general outline only for guidance and do not constitute any part of an offer or contract. Intending purchasers should not rely on them as statements of representation of fact, but must satisfy themselves by inspection or otherwise as to their accuracy. No person in this firm's employment has the authority to make or give any representation or warranty in respect of the property.