



16 Five Fields Close , Watford, WD19 5BZ Offers in excess of £1,000,000

Bright and spacious 5 Double bedroom detached house. The modern design includes the convenience of underfloor heating on the ground floor, and air conditioning. 5 Double Bedrooms and 3 bathrooms.

Benefits from driveway for up to three cars, as well as a garage, currently used as a utility room. The kitchen has been designed to a very high specification and is complete with top-of-the-range white goods.

This property spans a total of 2,314 sq ft, providing an abundance of room for various activities. Great location surrounded by the lush greenery of golf clubs and Harrow Weald Common. The property is close to Carpenders Park Overground Station.

Currently rented with an annual income of £38,400.

Viewing

Please contact us on 020 3198 4517 if you wish to arrange a viewing appointment for this property or require further information.

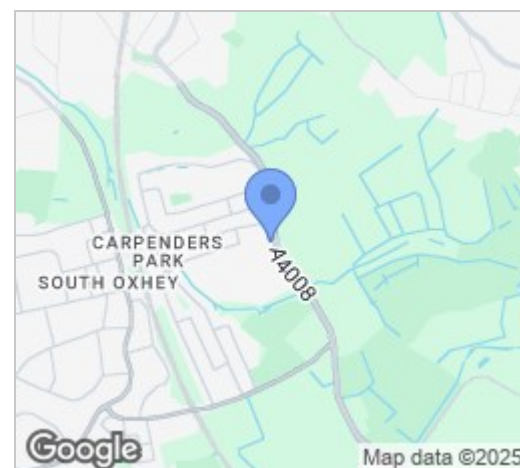
- No Upper Chain
- 3 Bathrooms
- Under Floor Heating
- 5 Double Bedrooms
- Garage
- Air Conditioning
- Parking for 3 Cars



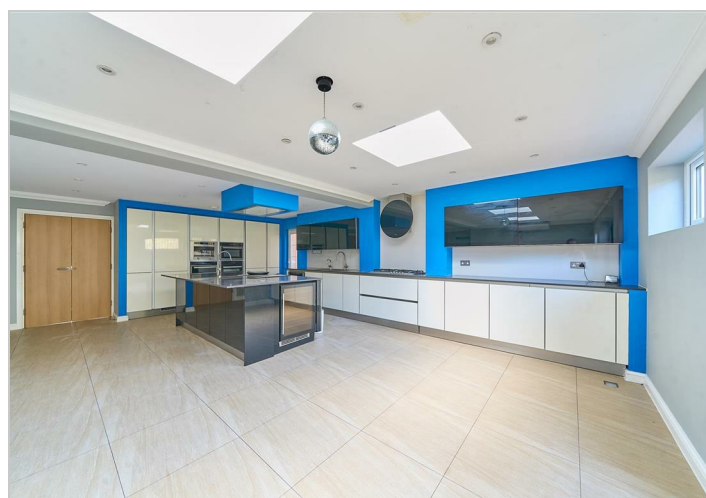
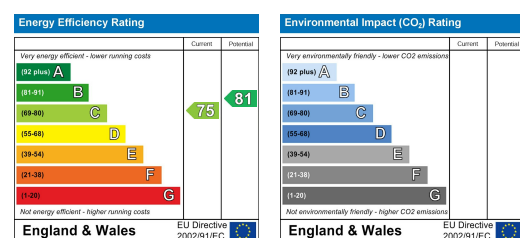
Floor Plan



Area Map



Energy Efficiency Graph



These particulars, whilst believed to be accurate are set out as a general outline only for guidance and do not constitute any part of an offer or contract. Intending purchasers should not rely on them as statements of representation of fact, but must satisfy themselves by inspection or otherwise as to their accuracy. No person in this firm's employment has the authority to make or give any representation or warranty in respect of the property.

68 Caledonian Road, London, N1 9DP
020 3198 4517
citymgt@dfint.com