



1 Bittacy Close

Mill Hill, London, NW7 1RU

£3,600 Per month

Nestled in the tranquil Bittacy Close, London, this splendid detached house offers a perfect blend of comfort and style. Spanning an impressive 2,185 square feet, the property boasts four spacious bedrooms, making it an ideal family home. The well-appointed layout includes a generous 21-foot lounge, perfect for relaxation and entertaining, alongside a delightful 17-foot kitchen/diner that invites culinary creativity and family gatherings.

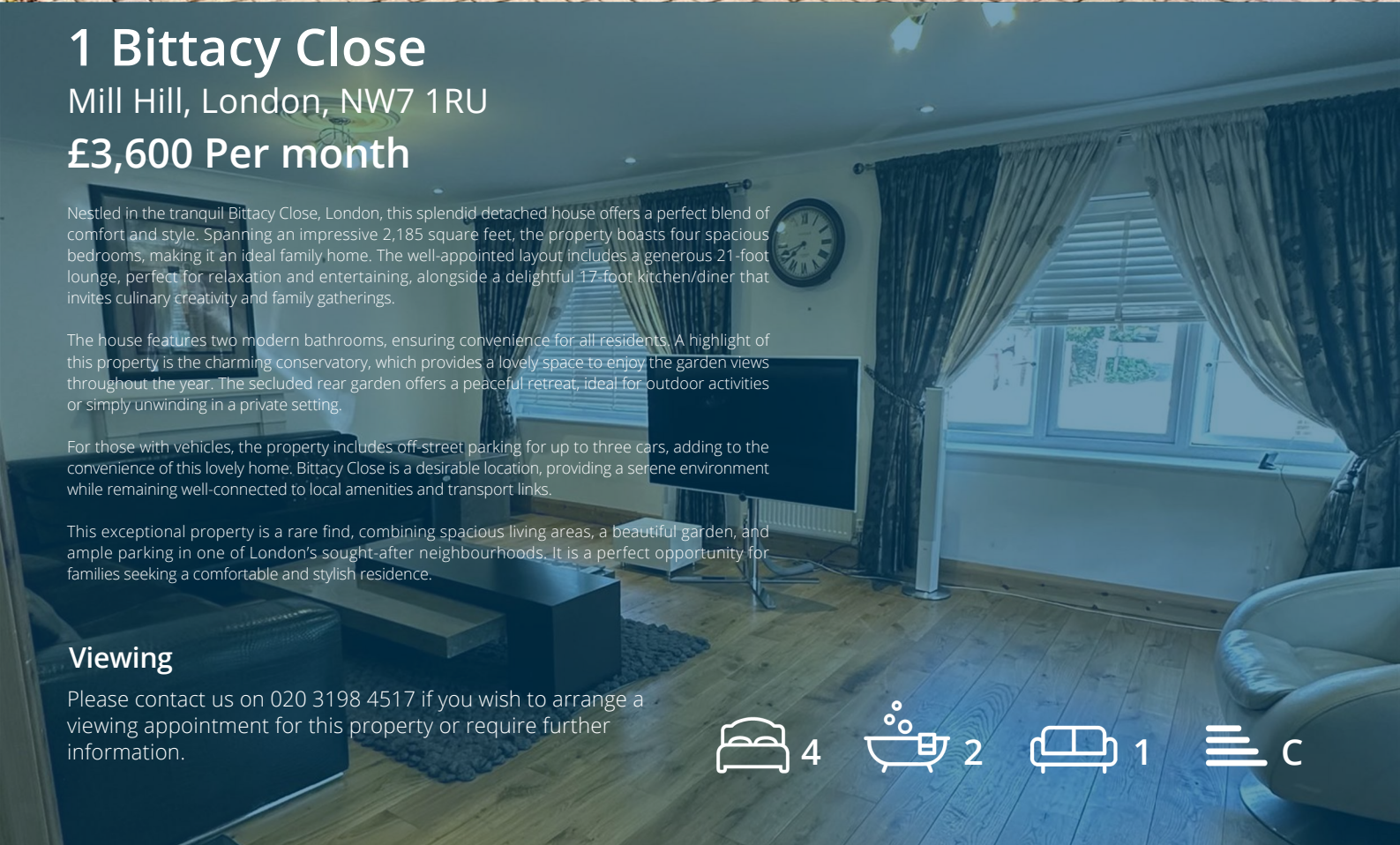
The house features two modern bathrooms, ensuring convenience for all residents. A highlight of this property is the charming conservatory, which provides a lovely space to enjoy the garden views throughout the year. The secluded rear garden offers a peaceful retreat, ideal for outdoor activities or simply unwinding in a private setting.

For those with vehicles, the property includes off-street parking for up to three cars, adding to the convenience of this lovely home. Bittacy Close is a desirable location, providing a serene environment while remaining well-connected to local amenities and transport links.

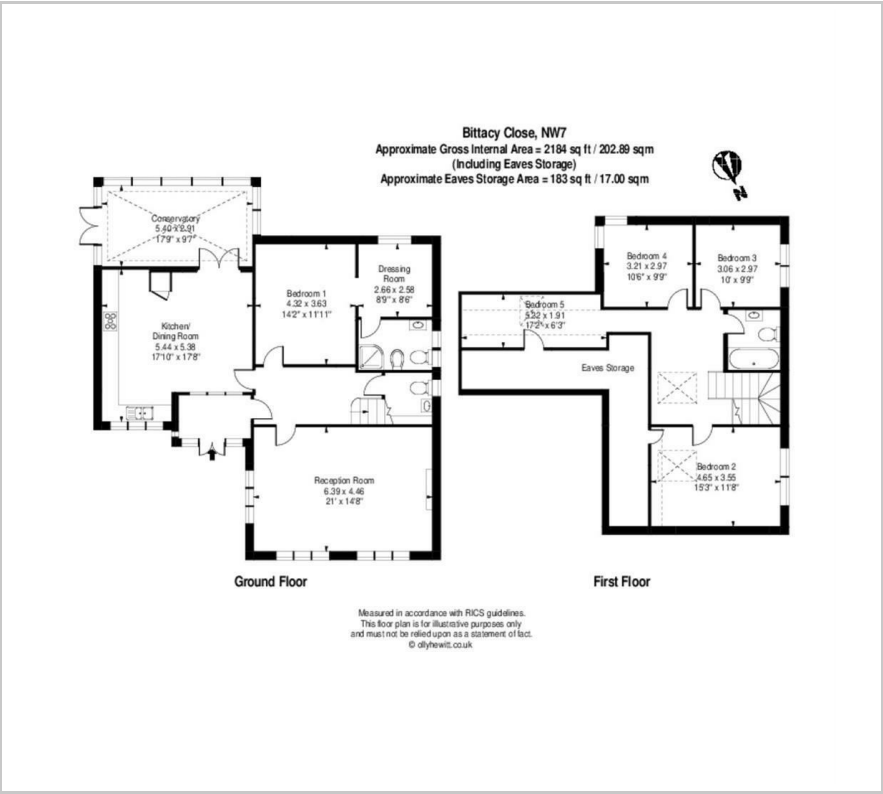
This exceptional property is a rare find, combining spacious living areas, a beautiful garden, and ample parking in one of London's sought-after neighbourhoods. It is a perfect opportunity for families seeking a comfortable and stylish residence.

Viewing

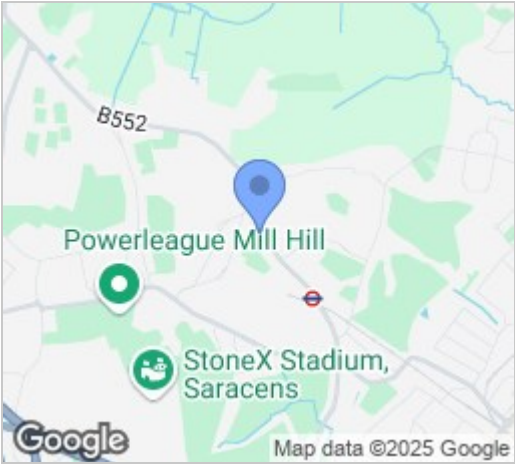
Please contact us on 020 3198 4517 if you wish to arrange a viewing appointment for this property or require further information.



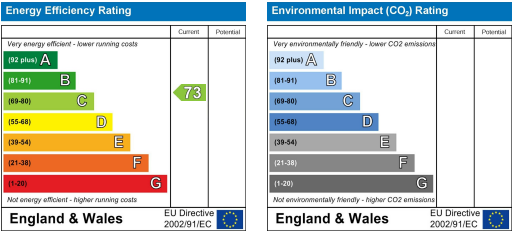
Floor Plan



Area Map



Energy Efficiency Graph



These particulars, whilst believed to be accurate are set out as a general outline only for guidance and do not constitute any part of an offer or contract. Intending purchasers should not rely on them as statements of representation of fact, but must satisfy themselves by inspection or otherwise as to their accuracy. No person in this firms employment has the authority to make or give any representation or warranty in respect of the property.