



## Flat 11 1 Zenith Close

, London, NW9 6FB

**Offers in excess of £410,000**

We are delighted to present this beautiful two bedroom, two bathroom flat located on the second floor of this prestige development moments away from Colindale station.

The flat comprises of large living room, fully integrated kitchen, two double bedrooms and two fully tiled bathrooms.

Lease 114 years

Service Charge £1894 per annum

Ground Rent £200 per annum

Rental Income £1750 per month

- Two Double Bedrooms
- Two Bathrooms
- Secure Development
- Near Colindale Station
- Balcony
- No Chain

### Viewing

Please contact us on 020 3198 4517 if you wish to arrange a viewing appointment for this property or require further information.



2



2



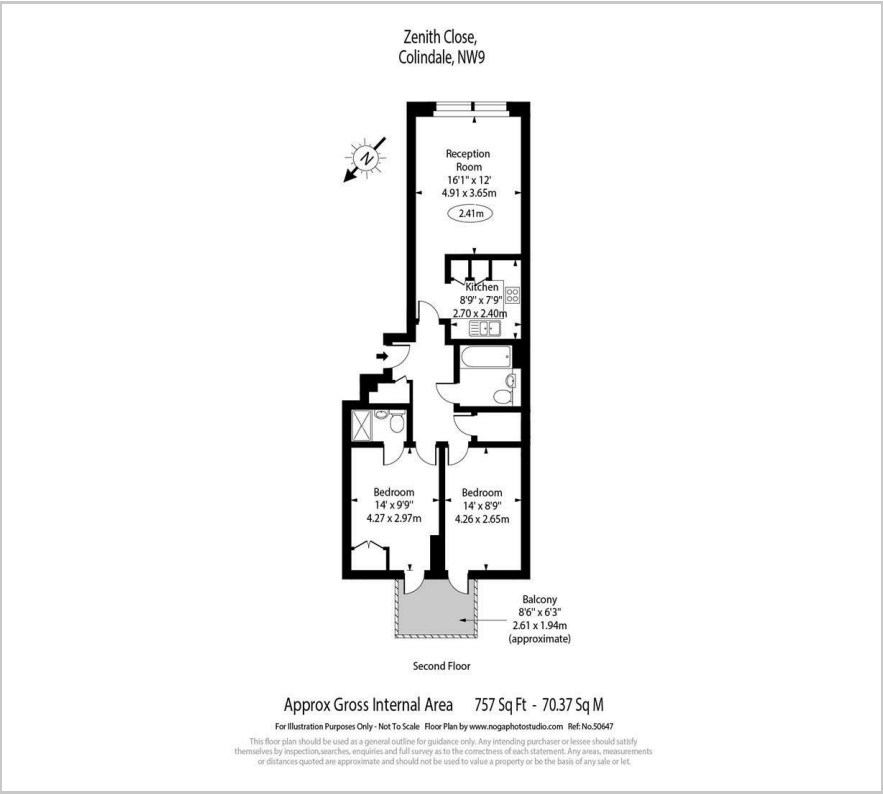
1



B



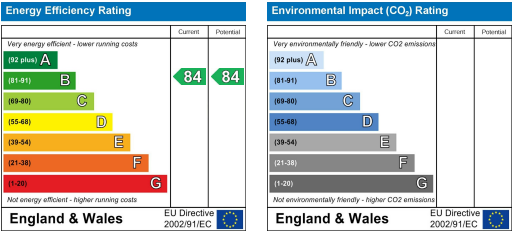
Floor Plan



Area Map



Energy Efficiency Graph



These particulars, whilst believed to be accurate are set out as a general outline only for guidance and do not constitute any part of an offer or contract. Intending purchasers should not rely on them as statements of representation of fact, but must satisfy themselves by inspection or otherwise as to their accuracy. No person in this firms employment has the authority to make or give any representation or warranty in respect of the property.