



Chevette Court Kimpton Road

, Luton, LU2 0GU

£1,550 Per month

We are proud to present this brand new 2 bedroom property located in Luton.

It is comprised of a spacious open planned living/kitchen area, 2 double bedrooms of which 1 is ensuite, a separate family sized bathroom and ample storage space.

It is located 10 minutes away by public transport to both the Luton Airport and City Center.

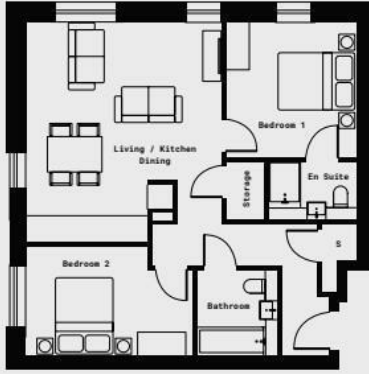
it is available on an unfurnished basis and comes with parking included.

Viewing

Please contact us on 020 3198 4517 if you wish to arrange a viewing appointment for this property or require further information.



Floor Plan



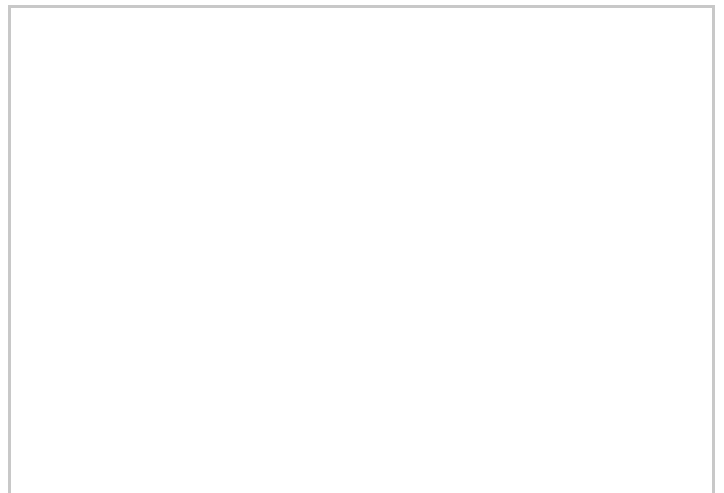
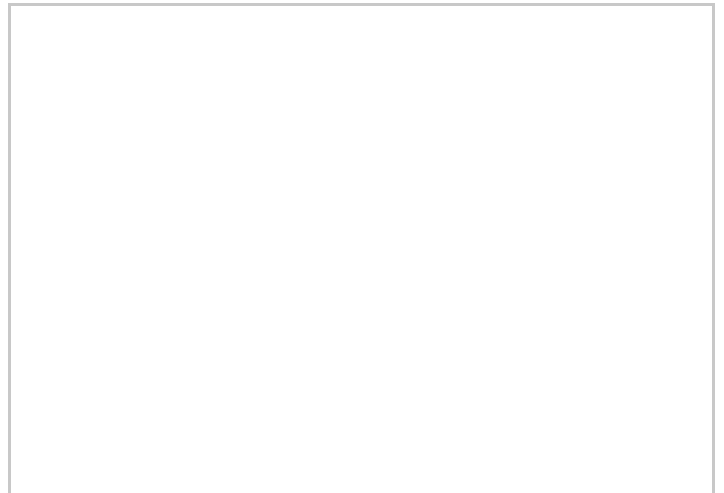
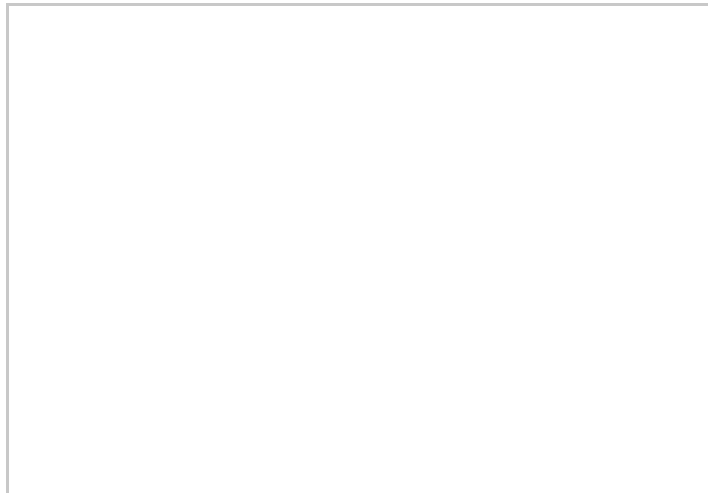
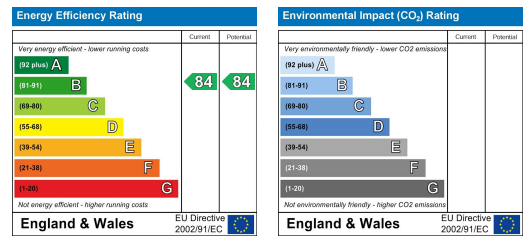
67m² (721ft²)

Kitchen/Dining	2.7m x 3.7m (8'10" x 12'2")
Living	2.8m x 4.8m (9'2" x 15'9")
Bedroom 1	3.4m x 3.3m (11'2" x 10'10")
Bedroom 2	2.8m x 4.2m (9'2" x 13'9")
Bathroom	2.2m x 2.8m (7'3" x 6'7")

Area Map



Energy Efficiency Graph



These particulars, whilst believed to be accurate are set out as a general outline only for guidance and do not constitute any part of an offer or contract. Intending purchasers should not rely on them as statements of representation of fact, but must satisfy themselves by inspection or otherwise as to their accuracy. No person in this firm's employment has the authority to make or give any representation or warranty in respect of the property.