



Firth House Juniper Crescent

Lewisham, Greenwich, London, SE10 8LU

£2,500 Per month

Daniel Ford Estates is delighted to bring you this property, located close to the lovely Greenwich and Blackheath parks. It is on the 6th floor of a fantastic newly constructed development, two bedroom furnished apartment in Greenwich. The property comprises of a bright and airy open-concept living area with floor to ceiling windows and access to a balcony allowing for fresh air and a paradise of relaxation when required. The kitchen boasts a sleek finish with appliances integrated within the units allowing for a modern look with ample storage space. The generously sized bedrooms also allow for an abundance of comfort where you lay at night with easy access to the lustrous bathroom with modern designs throughout as per the photos.

Brand New Development Integrated Appliances Concierge Greenwich Balcony Access Lift Access Secure Entry Prime Location Close To Amenities And Shops? Good Proximity To Transport Links

Viewing

Please contact us on 020 3198 4517 if you wish to arrange a viewing appointment for this property or require further information.



2



2



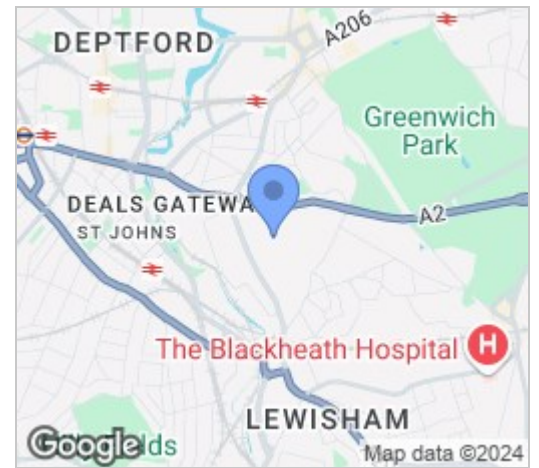
1



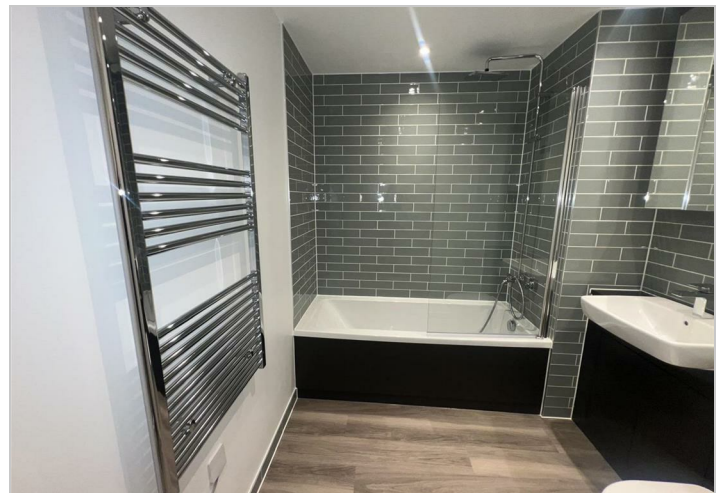
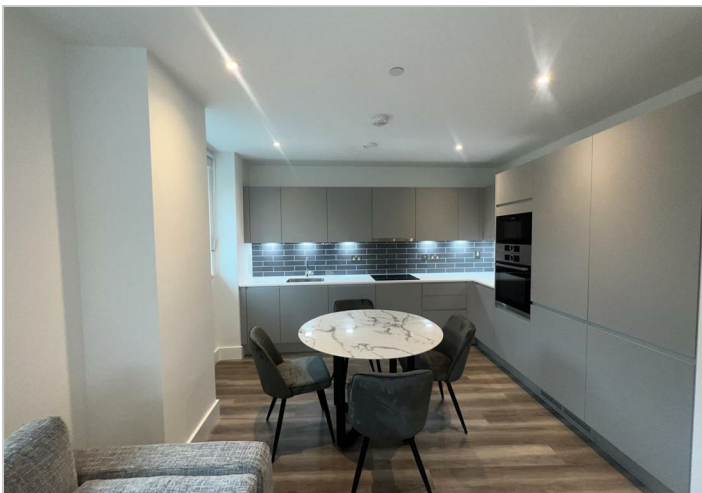
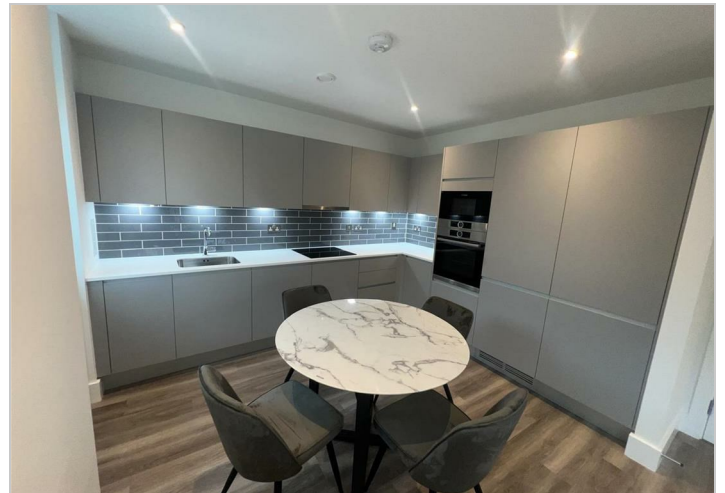
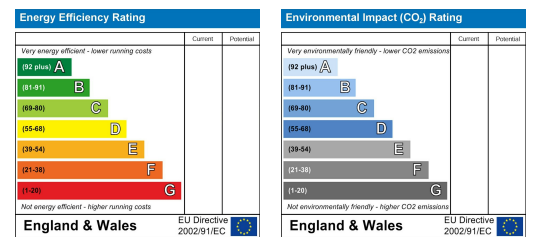
Floor Plan



Area Map



Energy Efficiency Graph



These particulars, whilst believed to be accurate are set out as a general outline only for guidance and do not constitute any part of an offer or contract. Intending purchasers should not rely on them as statements of representation of fact, but must satisfy themselves by inspection or otherwise as to their accuracy. No person in this firm's employment has the authority to make or give any representation or warranty in respect of the property.