



16 Hyde Grove

, Dartford, DA1 5GE

£2,100 Per month

Daniel ford are proud to present this stunning modern terraced house, located in the heart of Dartford.

The property features a bright and spacious open-plan living area offering a perfect blend of contemporary living and comfort. You'll find three comfortable bedrooms, including a master suite with an en-suite bathroom, along with a well-appointed family bathroom.

Conveniently the property is located around local parks and transport links including a bus stop just a 4-minute walk away, this property offers both convenience and accessibility.

Additionally, the property comes with its own private garden & driveway.

Viewing

Please contact us on 020 3198 4517 if you wish to arrange a viewing appointment for this property or require further information.



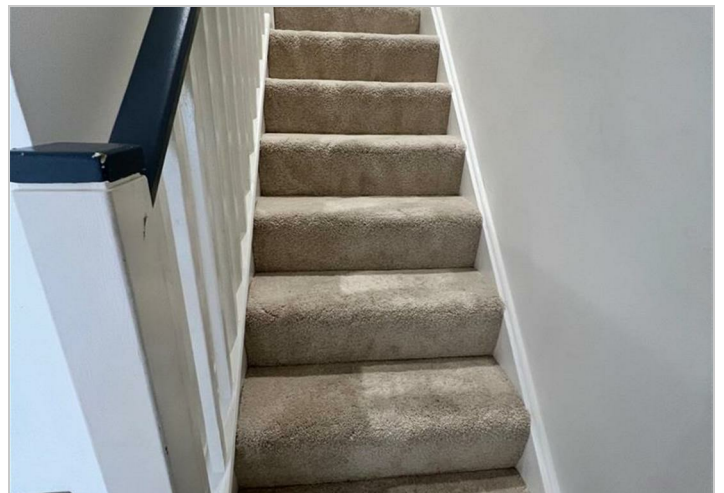
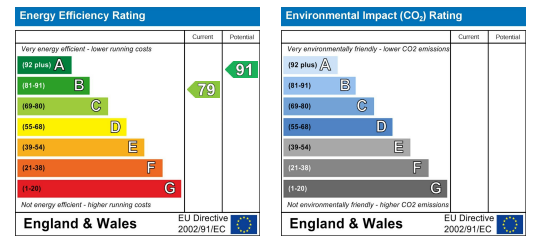
Floor Plan



Area Map



Energy Efficiency Graph



These particulars, whilst believed to be accurate are set out as a general outline only for guidance and do not constitute any part of an offer or contract. Intending purchasers should not rely on them as statements of representation of fact, but must satisfy themselves by inspection or otherwise as to their accuracy. No person in this firm's employment has the authority to make or give any representation or warranty in respect of the property.