

## 78 Swan Drive

Colindale, London, NW9 5DE

### £2,500 Per month

Welcome to Swan Drive, London - a charming location that could be the perfect setting for your new home! This delightful mid-terrace house boasts 3 bedrooms and 2 bathrooms, offering ample space for you and your family. With a generous 936 sq ft of living space, there is plenty of room to relax and entertain.

Located in a sought-after area, this property provides easy access to local amenities, schools, and transport links, making it ideal for those looking for convenience and comfort. The picturesque surroundings of Swan Drive add to the appeal of this lovely home, creating a peaceful and welcoming atmosphere.

Whether you're looking to settle down or invest in a property with great potential, this house on Swan Drive is definitely worth considering. Don't miss out on the opportunity to make this house your own and enjoy all that this wonderful location has to offer.

### Viewing

Please contact us on 020 3198 4517 if you wish to arrange a viewing appointment for this property or require further information.



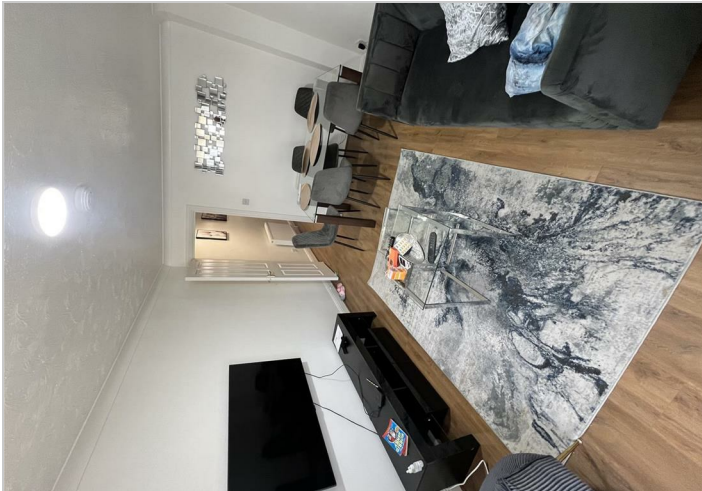
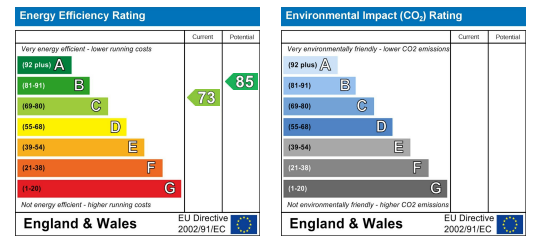
## Floor Plan



## Area Map



## Energy Efficiency Graph



These particulars, whilst believed to be accurate are set out as a general outline only for guidance and do not constitute any part of an offer or contract. Intending purchasers should not rely on them as statements of representation of fact, but must satisfy themselves by inspection or otherwise as to their accuracy. No person in this firm's employment has the authority to make or give any representation or warranty in respect of the property.