



## 108 Myddleton Avenue

, London, N4 2FH

£3,500 Per month

A large four bedroom house located in the popular Myddleton Avenue and consisting of three storeys with a garden:-

- Open plan reception/kitchen with appliances
- First Floor (2 bedrooms, a family bathroom and storage cupboard)
- Second Floor (2 bedrooms (one with an en-suite and a storage cupboard)
- Toilet
- Garden
- Short walk to Finsbury Park tube and overground station/Manor House tube station (Zone 2)
- Bus links nearby for easy access into the city.
- The popular amenities of Stoke Newington's Church Street /Newington Green and Highbury are a short walk away

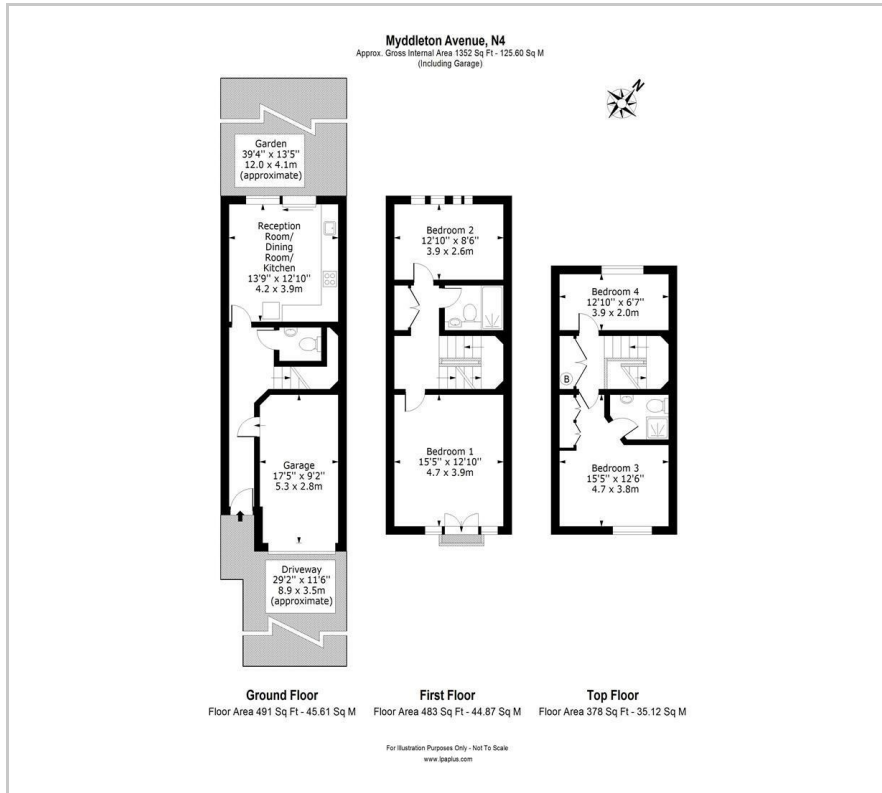
Please note : A 6- MONTH BREAK CLAUSE MANDATORY WILL BE ADDED TO THE CONTRACT AS THE PROPERTY IS ONLINE FOR SALE ALSO

### Viewing

Please contact us on 020 3198 4517 if you wish to arrange a viewing appointment for this property or require further information.



# Floor Plan



# Area Map



# Energy Efficiency Graph



These particulars, whilst believed to be accurate are set out as a general outline only for guidance and do not constitute any part of an offer or contract. Intending purchasers should not rely on them as statements of representation of fact, but must satisfy themselves by inspection or otherwise as to their accuracy. No person in this firm's employment has the authority to make or give any representation or warranty in respect of the property.