



137 Shirland Road

Maida Vale, London, W9 2EP

£2,500 Per month

We are proud to present this lovely 2 bedroom property located on Shirland Road, Maida Vale.

It is comprised of 2 double bedrooms, which one of them is a single bedroom and the second one a double size bedroom as well as a decently seized open plan living area/kitchen.

It located near several amenities on the same road.

The property is available now and unfurnished

Viewing

Please contact us on 020 3198 4517 if you wish to arrange a viewing appointment for this property or require further information.

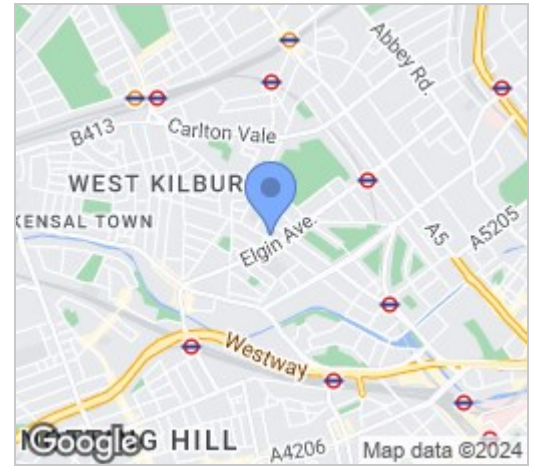
- 2 bedroom flat
- First floor flat
- Open plan kitchen / dining
- 1 double bedroom
- 1 single bedroom
- Unfurnished
- 10 min walk to Maida Vale to Underground Station



Floor Plan

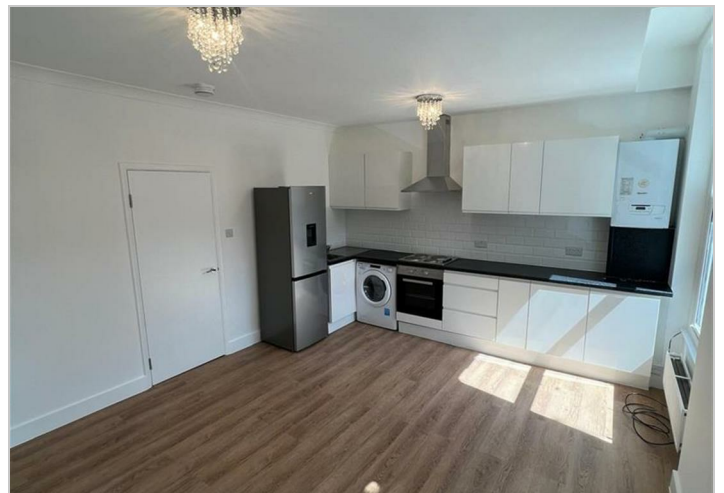


Area Map



Energy Efficiency Graph

Energy Efficiency Rating		Environmental Impact (CO ₂) Rating	
Current	Potential	Current	Potential
Very energy efficient - lower running costs (92 plus) A (81-91) B (69-80) C (55-68) D (39-54) E (21-38) F (1-20) G Not energy efficient - higher running costs		Very environmentally friendly - lower CO ₂ emissions (92 plus) A (81-91) B (69-80) C (55-68) D (39-54) E (21-38) F (1-20) G Not environmentally friendly - higher CO ₂ emissions	
England & Wales EU Directive 2002/91/EC		England & Wales EU Directive 2002/91/EC	



These particulars, whilst believed to be accurate are set out as a general outline only for guidance and do not constitute any part of an offer or contract. Intending purchasers should not rely on them as statements of representation of fact, but must satisfy themselves by inspection or otherwise as to their accuracy. No person in this firm's employment has the authority to make or give any representation or warranty in respect of the property.