



## 308 - 310 Cherry Hinton Road

, Cambridge, CB1 7AU

£910 Per week

Welcome to this charming apartment located on Cherry Hinton Road in the beautiful city of Cambridge. This property boasts a cosy reception room, perfect for relaxing or entertaining guests. With one spacious bedroom, you'll have a comfortable retreat to unwind after a long day. The apartment also features a modern bathroom for your convenience.

Situated in a prime location, this apartment offers easy access to all the amenities and attractions that Cambridge has to offer. Whether you enjoy strolling through the historic streets, visiting the renowned colleges, or exploring the picturesque parks, this property provides the ideal base for you to immerse yourself in the vibrant culture of the city.

Don't miss out on the opportunity to make this apartment your new home. Contact us today to arrange a viewing and experience the charm and convenience of living on Cherry Hinton Road.

### Viewing

Please contact us on 020 3198 4517 if you wish to arrange a viewing appointment for this property or require further information.



## Floor Plan

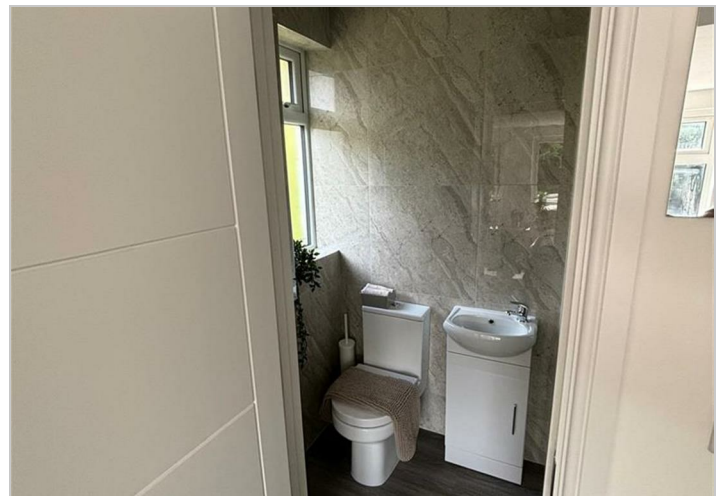
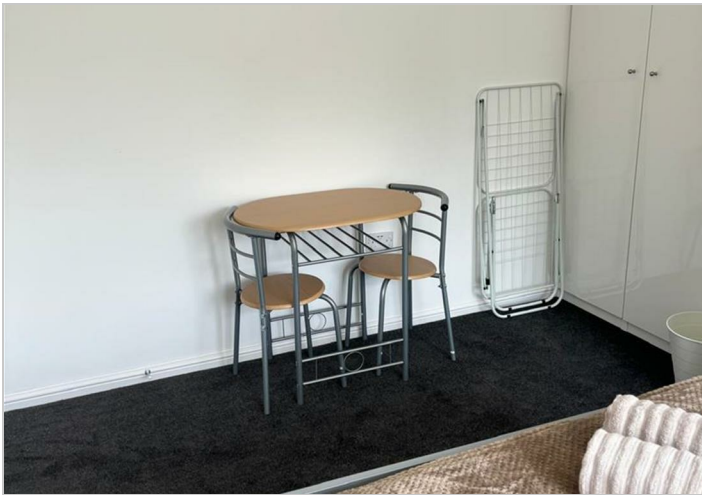


## Area Map



## Energy Efficiency Graph

Energy Efficiency Rating		Environmental Impact (CO <sub>2</sub> ) Rating	
Current	Potential	Current	Potential
Very energy efficient - lower running costs		Very environmentally friendly - lower CO <sub>2</sub> emissions	
(92 plus) <b>A</b>		(92 plus) <b>A</b>	
(81-91) <b>B</b>		(81-91) <b>B</b>	
(69-80) <b>C</b>		(69-80) <b>C</b>	
(55-68) <b>D</b>		(55-68) <b>D</b>	
(39-54) <b>E</b>		(39-54) <b>E</b>	
(21-38) <b>F</b>		(21-38) <b>F</b>	
(1-20) <b>G</b>		(1-20) <b>G</b>	
Not energy efficient - higher running costs		Not environmentally friendly - higher CO <sub>2</sub> emissions	
England & Wales		England & Wales	
EU Directive 2002/91/EC		EU Directive 2002/91/EC	



These particulars, whilst believed to be accurate are set out as a general outline only for guidance and do not constitute any part of an offer or contract. Intending purchasers should not rely on them as statements of representation of fact, but must satisfy themselves by inspection or otherwise as to their accuracy. No person in this firm's employment has the authority to make or give any representation or warranty in respect of the property.