



80 John Silkin Lane

, London, SE8 5BE

£1,900 Per month

We are proud to present this well presented flat located on the second floor in John Silkin Lane.

It is comprised of 2 spacious double bedrooms, a family sized bathroom, a spacious living area and a kitchen fitted with integrated appliances all finished to a high standard.

It is located less than a 15 minute walk away from the historic Surrey Quays shopping centre which allows it to benefit from numerous amenities.

Also closeby are both the Surrey Quays overground and Canada Water underground stations which provide excellent transport links.

It is available on an unfurnished basis.

Viewing

Please contact us on 020 3198 4517 if you wish to arrange a viewing appointment for this property or require further information.



2



1

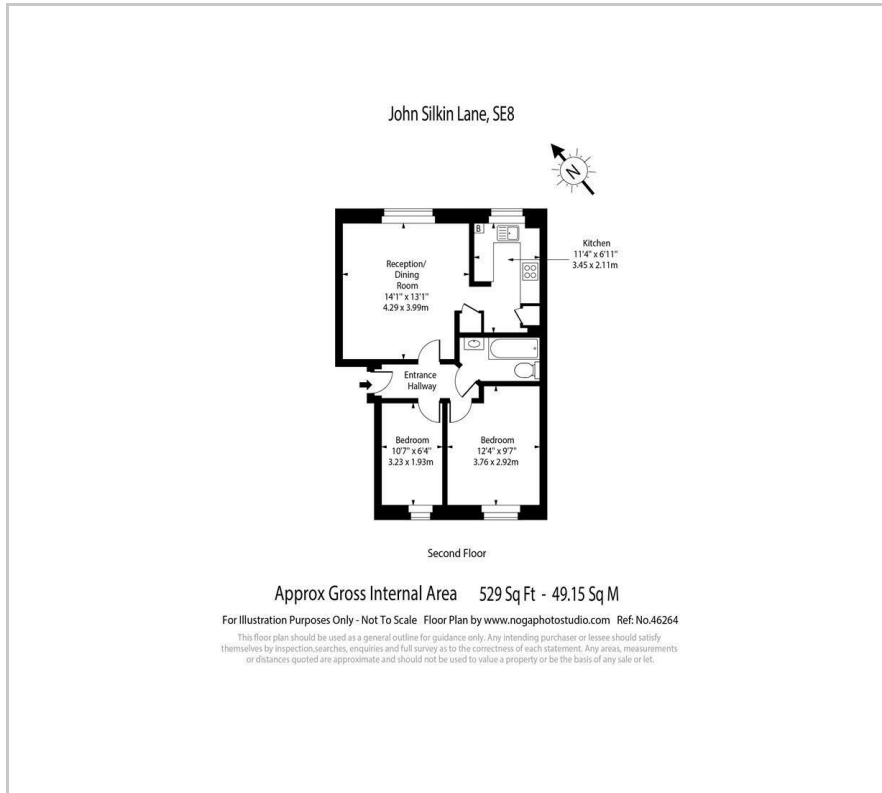


1



C

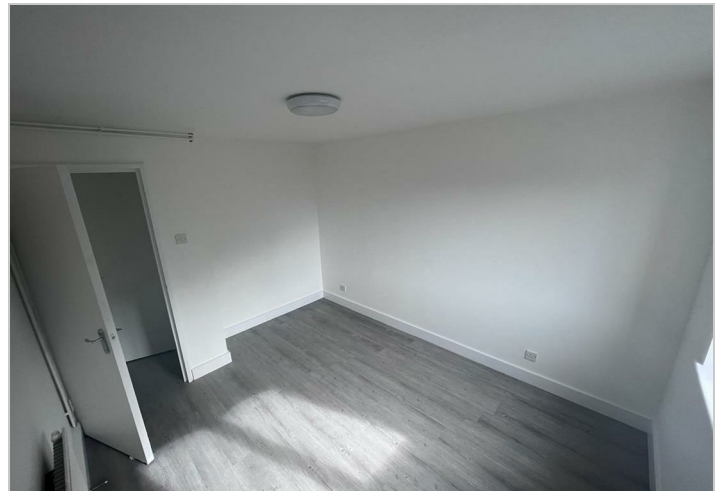
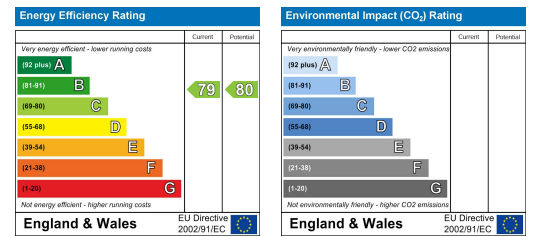
Floor Plan



Area Map



Energy Efficiency Graph



These particulars, whilst believed to be accurate are set out as a general outline only for guidance and do not constitute any part of an offer or contract. Intending purchasers should not rely on them as statements of representation of fact, but must satisfy themselves by inspection or otherwise as to their accuracy. No person in this firm's employment has the authority to make or give any representation or warranty in respect of the property.