



Apartment 707 10 Park Drive

, London, E14 9GD

£3,800 Per month

The apartments at 10 Park Drive are luxury situated on the 7th floor with 2 bedrooms and 2 bathrooms, the property is light, flexible and spacious featuring engineered wood flooring, comfort cooling, underfloor heating, sleek kitchens with fully-integrated appliances and marble kitchen islands, generous storage throughout, and most would extend onto a private balcony or terrace. The development provides 24hr security and concierge services, access to a 13th floor private Sky Terrace overlooking South Dock. There is a luxury club, and a private fitness facility featuring a 25m swimming pool, jacuzzi, sauna, steam room and a fitness class studio close to the building that you have to pay for a membership if you like to use it. The views from homes set on higher floors capture the Thames, the iconic O2 and Greenwich Peninsula, Canary Wharf's landmarks and the nearby docks. The large estate comprises a mix of residential, commercial, retail and amenity buildings arranged around a superbly planned public realm intersected by open green spaces.

- New Building
- 2 bedrooms
- 2 bathrooms
- Unfurnished
- 7th floor
- 24 Hours concierge
- Roof terrace
- Gym
- Leisure facilities
- Canary Wharf Tube 0.3 miles

Viewing

Please contact us on 020 3198 4517 if you wish to arrange a viewing appointment for this property or require further information.



2



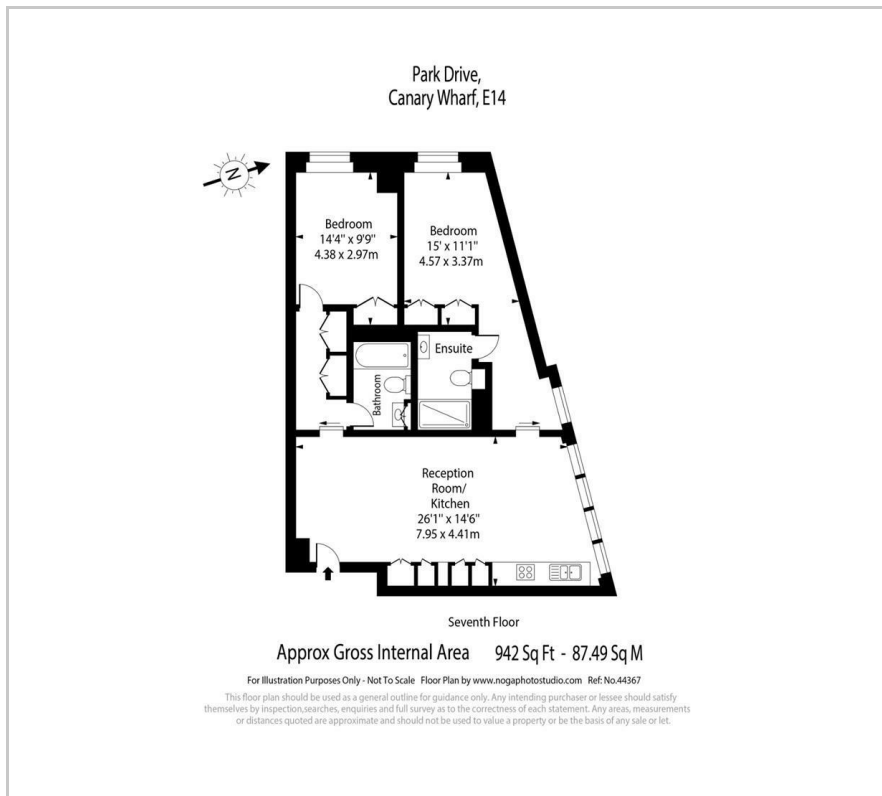
2



1



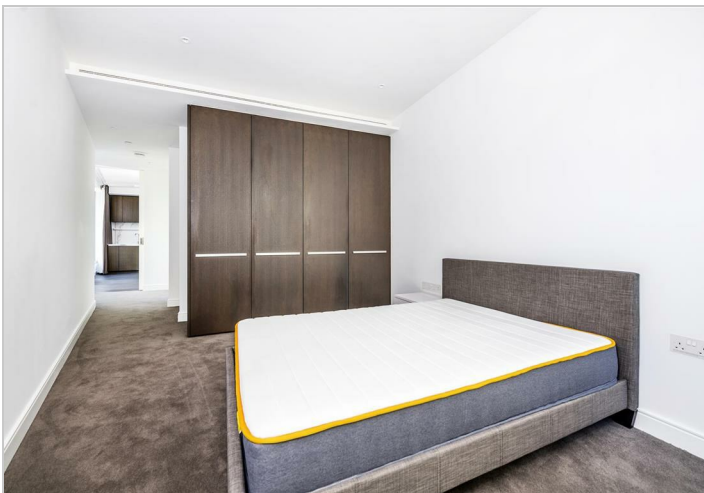
Floor Plan



Area Map



Energy Efficiency Graph



These particulars, whilst believed to be accurate are set out as a general outline only for guidance and do not constitute any part of an offer or contract. Intending purchasers should not rely on them as statements of representation of fact, but must satisfy themselves by inspection or otherwise as to their accuracy. No person in this firm's employment has the authority to make or give any representation or warranty in respect of the property.