



Sandpiper Court Shellduck Close

, London, NW9 5DW

£2,100 Per month

We are delighted to present this two bedroom first floor flat located in quiet cul-de-sac near Colindale Station and in close proximity to local amenities.

The property comprises of a large living room, a family bathroom, two double bedrooms and a separate fully-fitted kitchen. T

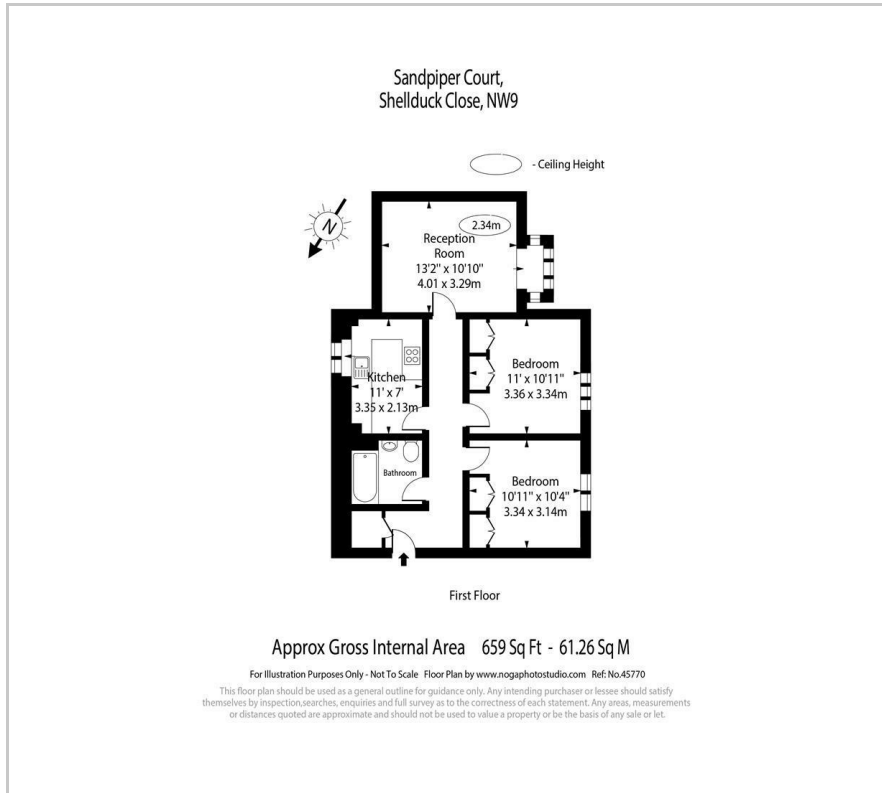
The property is furnished and early July. Call 0207 713 0909 to book a viewing now!

Viewing

Please contact us on 020 3198 4517 if you wish to arrange a viewing appointment for this property or require further information.



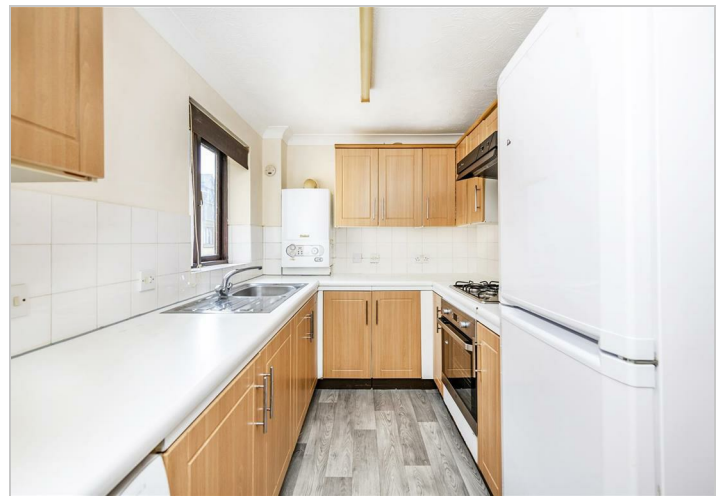
Floor Plan



Area Map



Energy Efficiency Graph



These particulars, whilst believed to be accurate are set out as a general outline only for guidance and do not constitute any part of an offer or contract. Intending purchasers should not rely on them as statements of representation of fact, but must satisfy themselves by inspection or otherwise as to their accuracy. No person in this firm's employment has the authority to make or give any representation or warranty in respect of the property.