



26 Elderberry Way

, London, E6 6JL

£2,500

Daniel Ford is delighted to introduce this recently refurbished terrace house situated in Newham.

This property features a generous living room, a fitted kitchen, three bedrooms including one with an ensuite, and a separate toilet and bathroom.

Additionally, it offers a private parking drive and an outdoor garden space. Conveniently located just a 2-minute walk from Tesco, with local bus stops also easily accessible on foot.

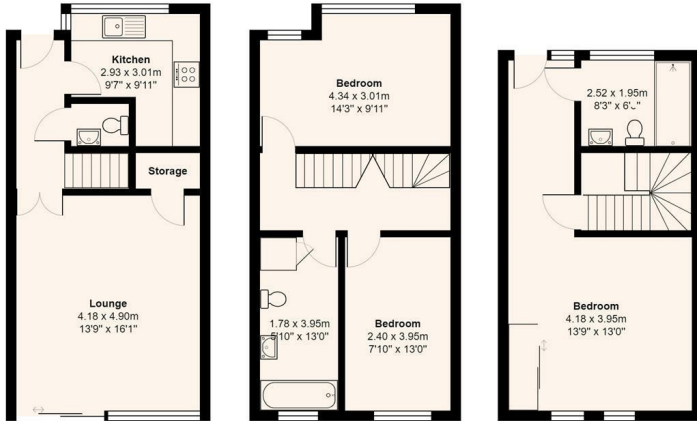
Viewing

Please contact us on 020 3198 4517 if you wish to arrange a viewing appointment for this property or require further information.



Floor Plan

26, Elderberry Way, East Ham, London, E6 6JL

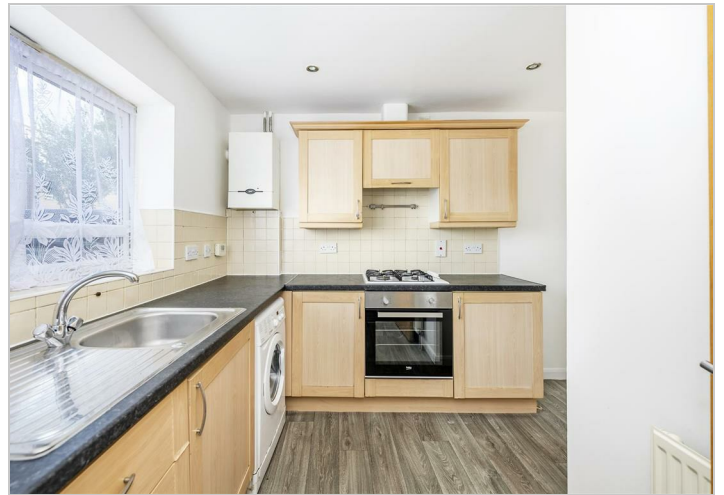
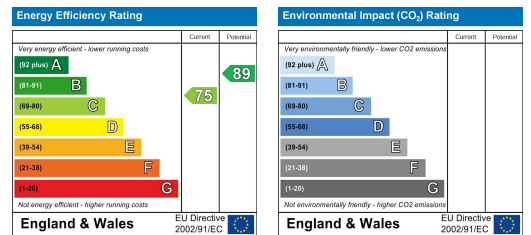


Total Area: 108.8 m² ... 1171 ft²
All measurements are approximate and for display purposes only

Area Map



Energy Efficiency Graph



These particulars, whilst believed to be accurate are set out as a general outline only for guidance and do not constitute any part of an offer or contract. Intending purchasers should not rely on them as statements of representation of fact, but must satisfy themselves by inspection or otherwise as to their accuracy. No person in this firm's employment has the authority to make or give any representation or warranty in respect of the property.