



## 7 Marston Close

Swiss Cottage, London, NW6 4EU

**£5,400 Per month**

We are proud to present this lovely 4 bedroom mid terraced house located in South Hampstead, it is comprised of 4 bedrooms of which 1 is en-suite spread out over 3 floors, a decently sized dining area with a separate kitchen fitted with integrated appliances.

The living room opens out onto a private garden area and there is a private driveway with parking space for 2 cars.

There are several amenities close by from which the property benefits alongside excellent transport links.

### Viewing

Please contact us on 020 3198 4517 if you wish to arrange a viewing appointment for this property or require further information.



4



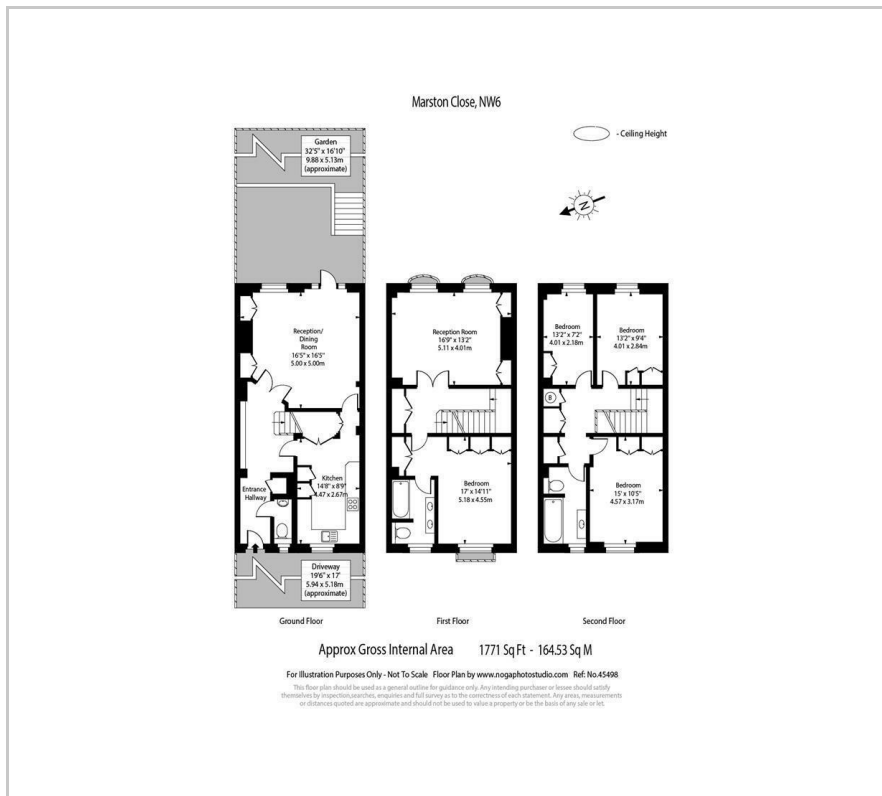
2



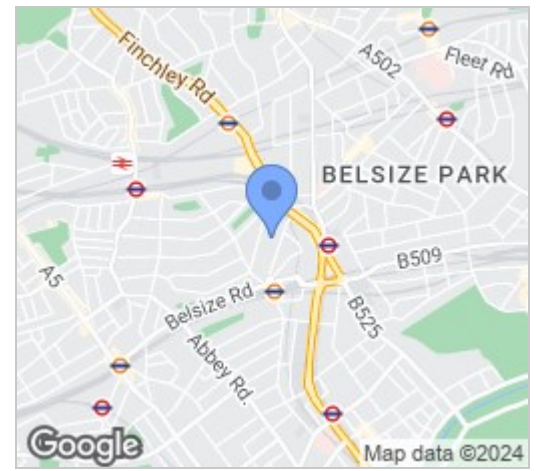
1



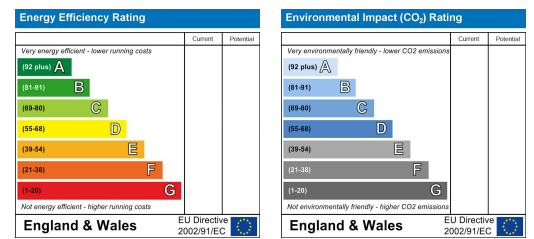
# Floor Plan



# Area Map



# Energy Efficiency Graph



These particulars, whilst believed to be accurate are set out as a general outline only for guidance and do not constitute any part of an offer or contract. Intending purchasers should not rely on them as statements of representation of fact, but must satisfy themselves by inspection or otherwise as to their accuracy. No person in this firm's employment has the authority to make or give any representation or warranty in respect of the property.