



## Fathom Court Basin Approach

, London, E16 2FF

£2,125 Per month

This large two-bedroom two bathroom apartment benefits from an open plan reception and kitchen leading onto a private balcony. The flat is located in a sought after development overlooking Royal Albert Docks.

Located a short distance from Gallions Reach DLR offering access to Canary Wharf and The City.

### Viewing

Please contact us on 020 3198.4517 if you wish to arrange a viewing appointment for this property or require further information.



2



2



1



B

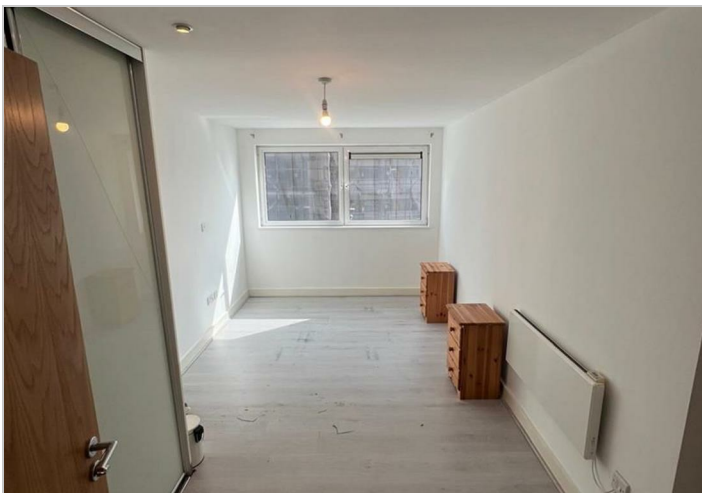
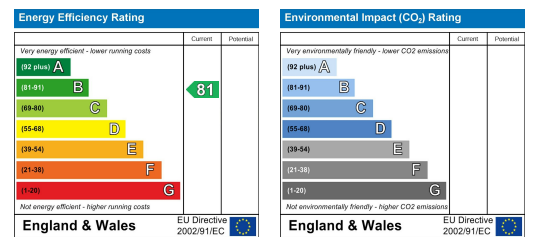
## Floor Plan



## Area Map



## Energy Efficiency Graph



These particulars, whilst believed to be accurate are set out as a general outline only for guidance and do not constitute any part of an offer or contract. Intending purchasers should not rely on them as statements of representation of fact, but must satisfy themselves by inspection or otherwise as to their accuracy. No person in this firm's employment has the authority to make or give any representation or warranty in respect of the property.