

  
*Natasha Howarth*  
ESTATE AGENTS



15 Grebe Court Grebe Road, Bridgwater, TA6 5RD

**£900 Per month**

An excellent chance to rent this two bedroom back to back house situated in the popular Blakespool Park development. The property offers a lounge and kitchen to the ground floor with two bedrooms and a bathroom suite to the first floor. The property has just had a renovation to include new windows and front door, a new kitchen and carpets throughout. There is one allocated parking space together with a small lawned area to the front.

## ENTRANCE

Via front door to:

## HALL

Doors to:

## LIVING ROOM

Window to front aspect. Feature fireplace. Stairs rising to first floor.

## KITCHEN

Dual aspect windows. Fitted with base and drawer units with work surfaces over and stainless steel sink and drainer inset. Space and point for cooker. Space and plumbing for a washing machine, space for a fridge. Tiled splashbacks.

## LANDING

Loft hatch. Doors to:

## BEDROOM ONE

Window to front aspect. Panelled electric heater. Built in wardrobes with mirrored sliding doors. Airing cupboard housing the water tank.

## BEDROOM TWO

Window to front aspect.

## BATHROOM

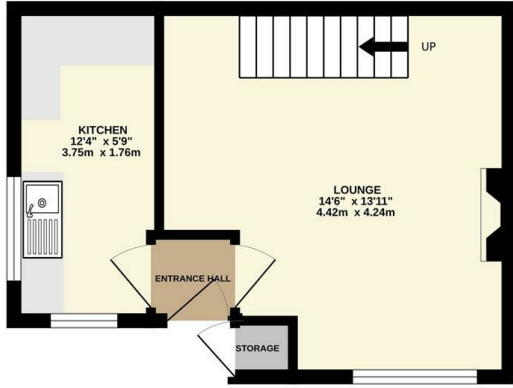
Window to front aspect. Fitted with a three piece white suite comprising panelled bath with electric shower over, pedestal wash hand basin and WC, partially tiled walls.

## PARKING

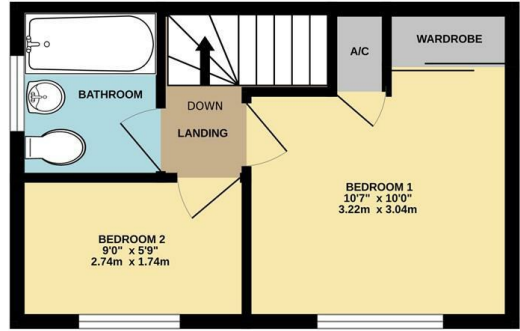
To the front of property in the allocated parking bay.

# Floor Plan

GROUND FLOOR



1ST FLOOR

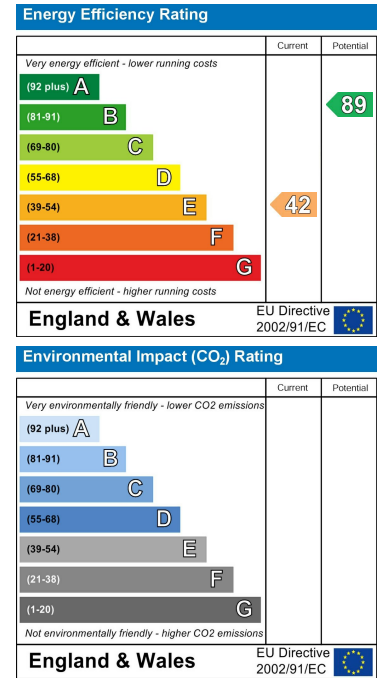


Whilst every attempt has been made to ensure the accuracy of the floorplan contained here, measurements of doors, windows, rooms and any other items are approximate and no responsibility is taken for any error, omission or mis-statement. This plan is for illustrative purposes only and should be used as such by any prospective purchaser. The services, systems and appliances shown have not been tested and no guarantee as to their operability or efficiency can be given.  
Made with Metropix ©2024

## Area Map



## Energy Efficiency Graph



For clarification we wish to inform prospective purchasers that we have prepared these sales particulars as a general guide. The agent has not tested any appliances or services, heating systems etc so cannot verify if they are in working order, nor have we carried out a survey. Room sizes should not be relied upon for carpets and furnishings, if there are important matters which are likely to affect your decision to buy, please contact us or obtain verification from your Solicitor or Surveyor.  
References to the Tenure of a Property are based on information supplied by the Seller.



01278 574562 07710 392220  
sales@nhowartheestateagents.co.uk  
www.natashahowartheestateagents.co.uk

