

SHIRLEY
FOUR
BEDROOM
HOME

BLOOR HOMES



A four bedroom detached home comprising a lounge with feature bay window and a spacious open plan kitchen / dining / family area with French doors leading to the rear garden. Downstairs also features a study, utility room and cloakroom. The master bedroom benefits from fitted wardrobes and an en suite shower room.

SHIRLEY

A STUNNING FOUR
BEDROOM FAMILY HOME

**SHIRLEY
FOUR
BEDROOM
HOME**

FIRST FLOOR:

BEDROOM 1
3.44m x 3.14m
11'3" x 10'4"

EN SUITE

BEDROOM 2
4.07m x 2.58m
13'4" x 8'6"

BEDROOM 3
2.69m x 3.26m
8'10" x 10'8"

BEDROOM 4
2.04m x 2.61m
6'8" x 8'7"

BATHROOM

GROUND FLOOR:

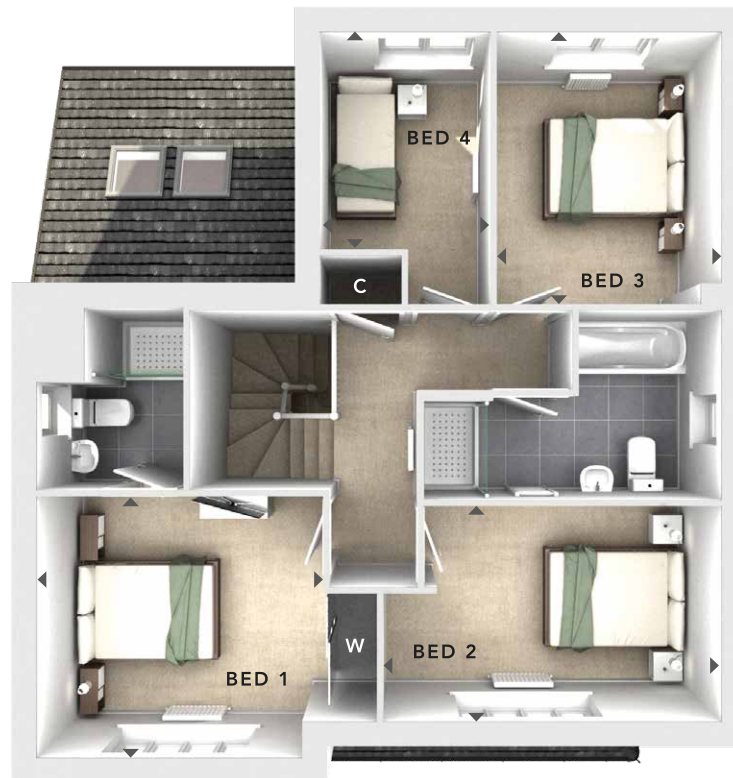
LOUNGE
3.38m x 4.95m
11'1" x 16'3"

**KITCHEN / DINING /
FAMILY**
8.23m x 3.19m
27'0" x 10'6"

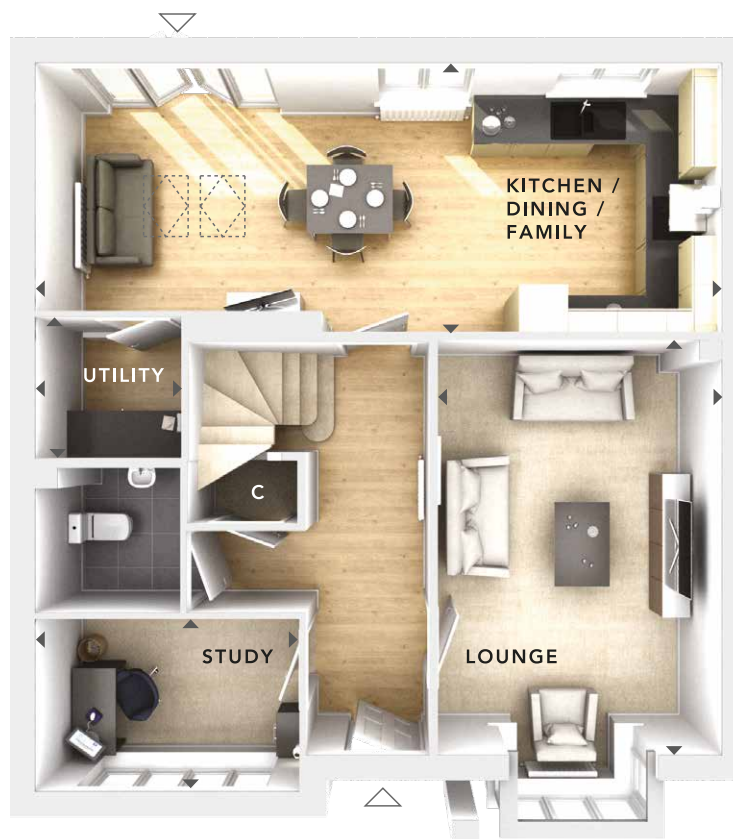
UTILITY
1.73m x 1.71m
5'8" x 5'7"

STUDY
3.16m x 2.06m
10'4" x 6'9"

CLOAKS



**FIRST
FLOOR**



**GROUND
FLOOR**

W	- Fitted Wardrobes
C	- Storage
△	- External Access
◀▶	- Measurement Points
© Bloor Homes • 479B 4.0	



These particulars are intended as a preliminary guide for prospective purchasers and should not be relied upon. The elevational treatment for individual house types shows a typical arrangement. Details of materials and design treatments may vary. Any artist impressions shown are not intended to represent any particular plot. Purchasers are advised to inspect the layout plan to establish the arrangement of the house and surrounding property. Internal layouts show a general arrangement which may vary from plot to plot. Room sizes given are approx. overall finished room sizes and subject to normal building tolerances (ie ± 75mm). In all instances purchasers are advised to inspect plot specific information available from our sales team. Nothing in these particulars or verbal assurance shall form or constitute part of any contract, and are given without any responsibility on behalf of Bloor Homes.