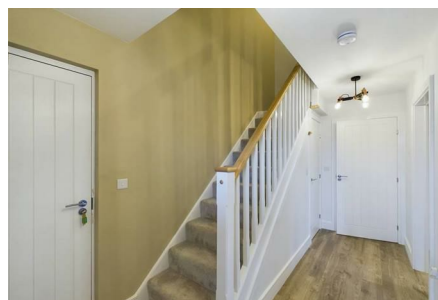


High Oakham Ridge, Mansfield, Nottinghamshire NG18 5AH



Asking Price £420,000 Freehold



ALL MAPPERLEY PLOTS ARE NOW SSTC

Three storey accommodation giving a family everything they would need. The study and games room on the ground floor would make ideal guest bedrooms or additional living for relatives with shower room too. The first floor rooms open onto the rear garden, with French doors from both the living room and the open plan dining/ kitchen / family room. On the top floor are four double bedrooms and a family bathroom, with an ensuite to the main bedroom. Call us on 01623 427777 to arrange your site visit!

Showhome

These photographs are of our show home not this design.

Living Room
21'9" x 11'1"

Kitchen/Dining/Family
26'2" x 12'8"

Utility Room
7'1" x 3'10"

Study
12'7" x 11'9"

Cloakroom
7'1" x 2'11"

Bedroom One
12'7" x 9'11"

En Suite
8'11" x 5'2"

Bedroom Two
11'3" x 10'9"

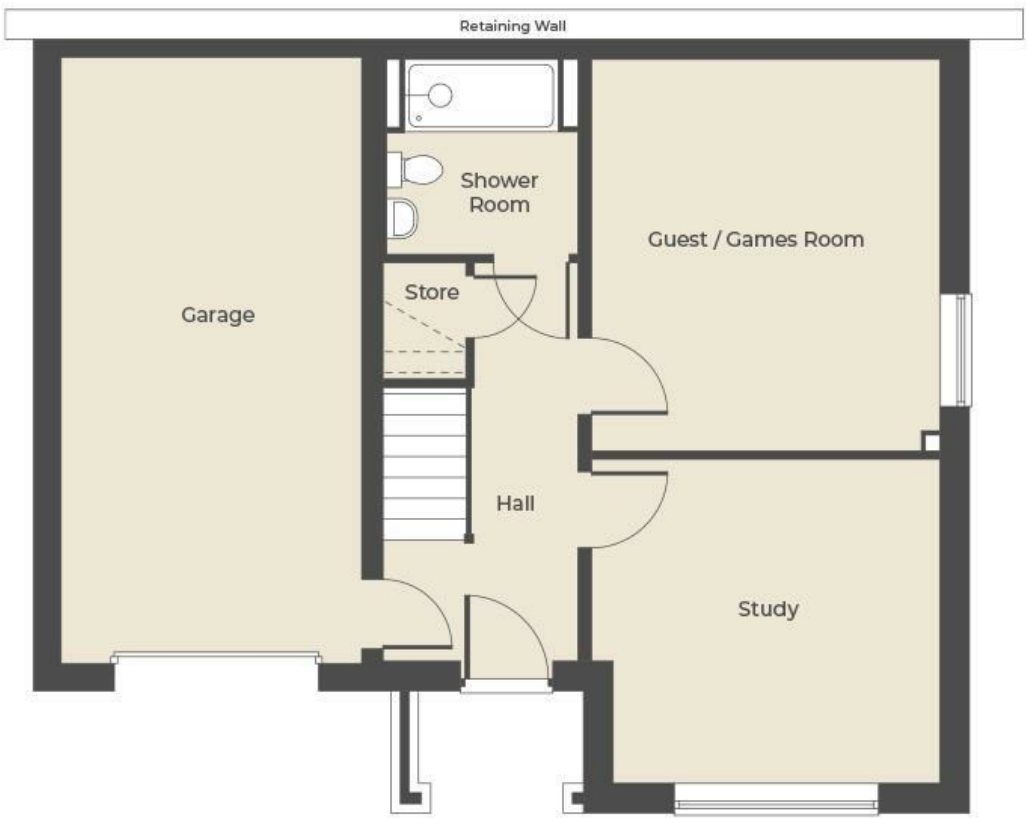
Bedroom Three
11'3" x 10'9"

Bedroom Four
10'1" x 10'6"

Guest Bedroom / Games Rooms
14'2" x 10'6"

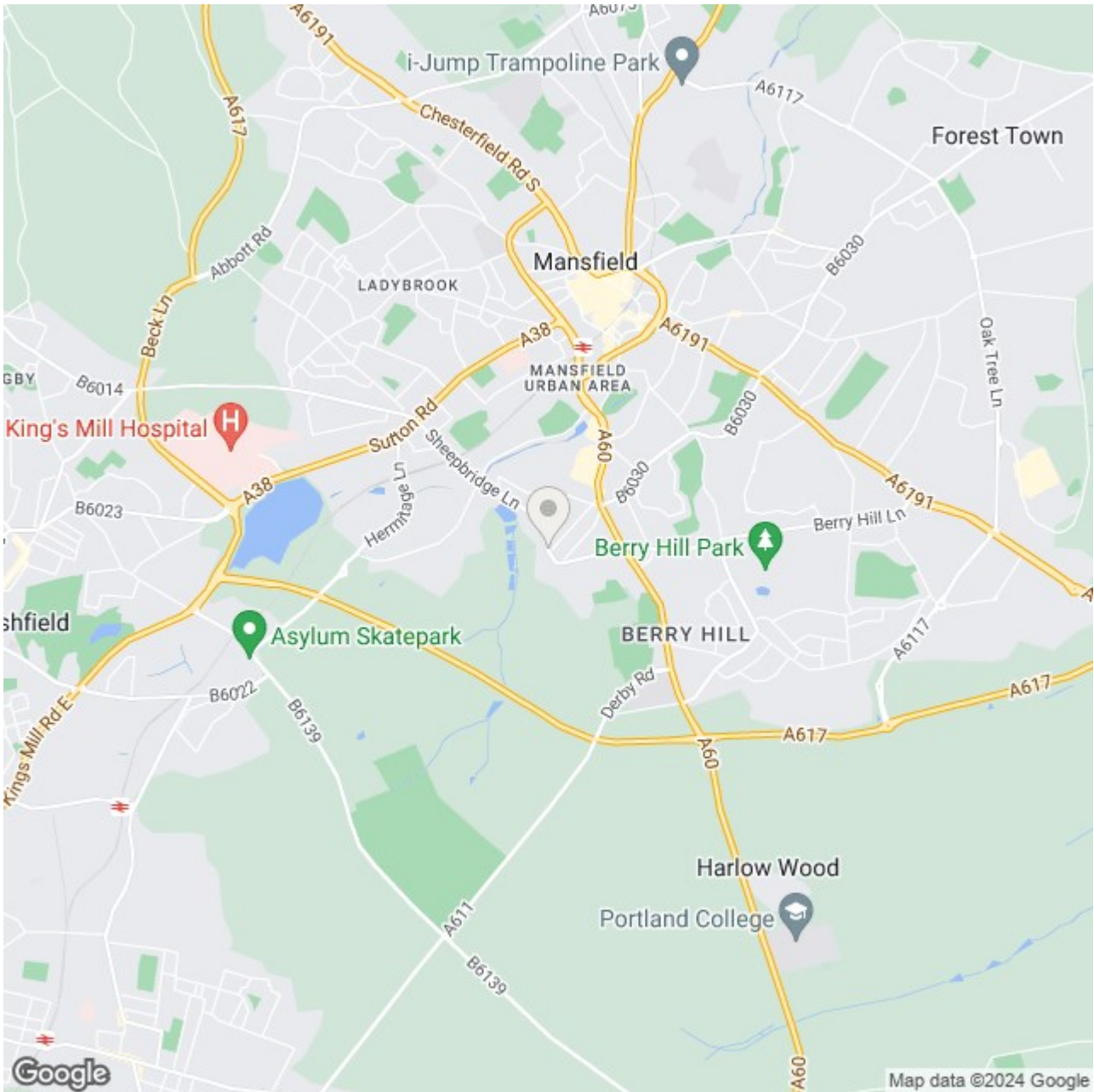
Shower Room
7'1" x 6'11"

Bathroom
8'11" x 5'8"



DIMENSIONS

- Study**
3581mm x 3849mm (11'9" x 12'7")
- Guest/Games Room**
4324mm x 3849mm (14'2" x 12'7")
- Shower Room**
2152mm x 2114mm (7'1" x 6'11")



Energy Efficiency Rating

	Current	Potential
Very energy efficient - lower running costs		
(92 plus) A		
(81-91) B		
(69-80) C		
(55-68) D		
(39-54) E		
(21-38) F		
(1-20) G		
Not energy efficient - higher running costs		

England & Wales EU Directive 2002/91/EC 

Environmental Impact (CO₂) Rating

	Current	Potential
Very environmentally friendly - lower CO ₂ emissions		
(92 plus) A		
(81-91) B		
(69-80) C		
(55-68) D		
(39-54) E		
(21-38) F		
(1-20) G		
Not environmentally friendly - higher CO ₂ emissions		

England & Wales EU Directive 2002/91/EC 