

High Oakham Ridge, Mansfield, Nottinghamshire NG18 5AH



BELVOIR!

Property is personal

£330,000 Freehold



Two storey at the front and three storey at the back is The Ramsdale which is a deceptively spacious three bedroom home with an integral garage. Off entrance hall on the upper ground floor is a cloakroom and a rear facing living room. Downstairs, on the ground floor, is a generous open plan kitchen / dining / family room with doors to the garden, a utility room and another cloakroom. On the top floor is the main bedroom with en-suite, two further bedrooms and a family bathroom with both bath and shower. Call us on 01623 427777 to arrange your site visit!

Entrance Hallway



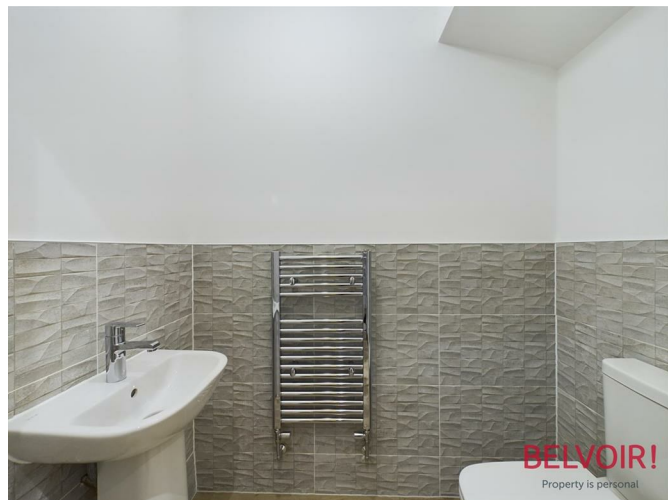
Study Room



WC



WC



Living Room
17'4 x 13'5

Stairs & Landing

Kitchen/Family/Dining Area
17'4 x 15'11



Utility Room
7'2 x 5'11



Hallway



Bedroom Two
14'0 x 8'6



Bedroom Three
10'2 x 8'6



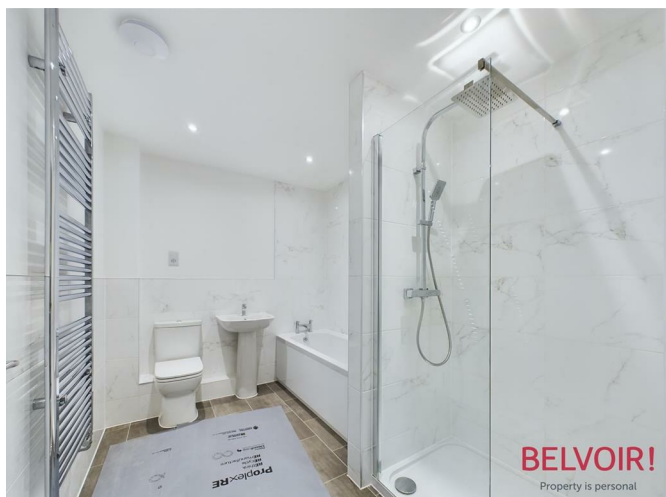
Bedroom One
13'1 x 11'8



En-Suite
8'4 x 3'11



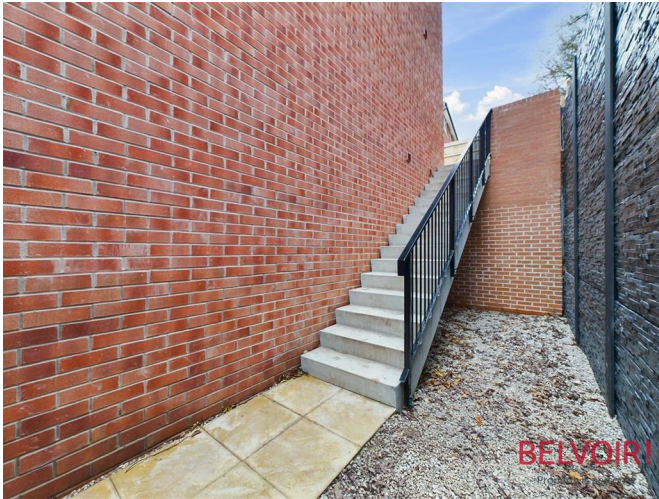
Bathroom
10'0 x 7'3

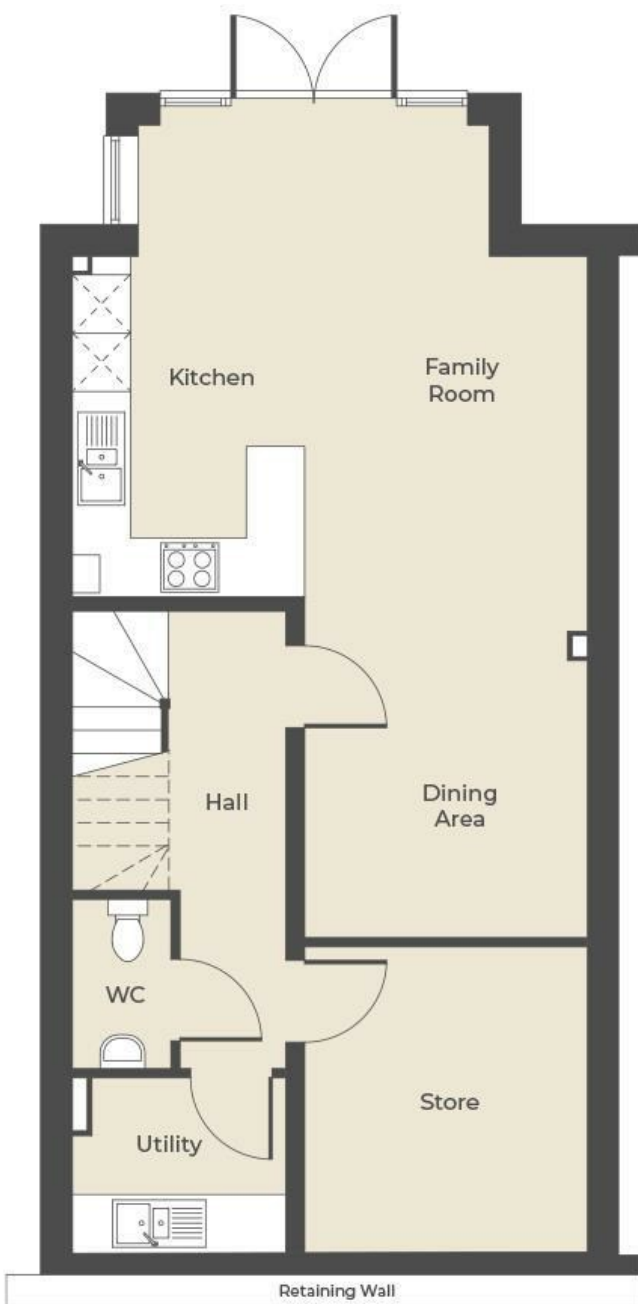


Garden



Side





DIMENSIONS

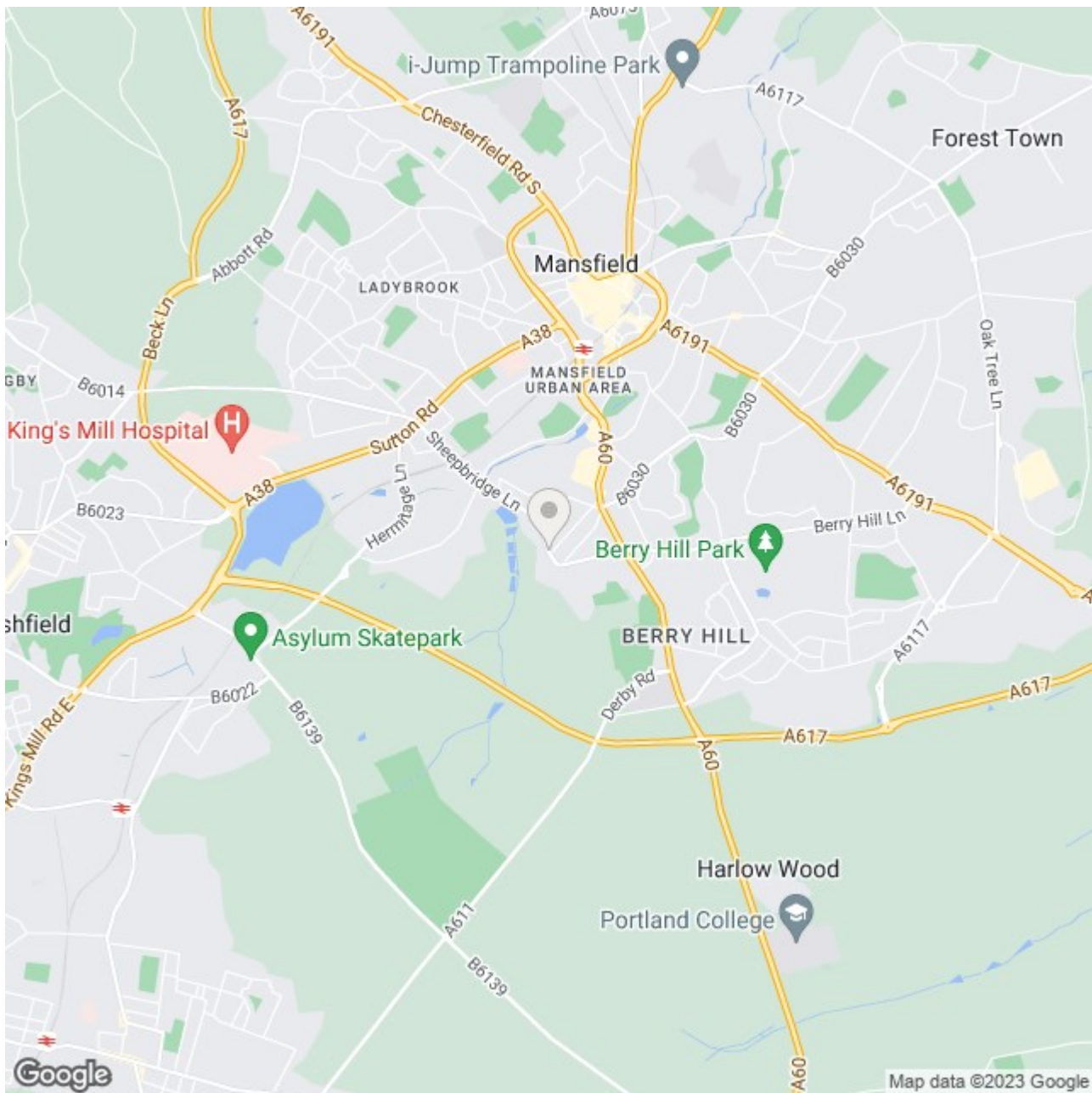
Kitchen/Family
4850mm x 5286mm (15'11" x 17'4")

Dining Area
3508mm x 2900mm (11'5" x 9'6")

Utility
1805mm x 2191mm (5'11" x 7'2")

WC 1
1800mm x 1018mm (5'11" x 3'4")

Studio/Store
3140mm x 2900mm (10'3" x 9'6")



Energy Efficiency Rating

	Current	Potential
<i>Very energy efficient - lower running costs</i>		
(92 plus) A		
(81-91) B		
(69-80) C		
(55-68) D		
(39-54) E		
(21-38) F		
(1-20) G		
<i>Not energy efficient - higher running costs</i>		
England & Wales	EU Directive 2002/91/EC	

Environmental Impact (CO₂) Rating

	Current	Potential
<i>Very environmentally friendly - lower CO₂ emissions</i>		
(92 plus) A		
(81-91) B		
(69-80) C		
(55-68) D		
(39-54) E		
(21-38) F		
(1-20) G		
<i>Not environmentally friendly - higher CO₂ emissions</i>		
England & Wales	EU Directive 2002/91/EC	