



Plot 1 St Dunstans, Melrose, TD6 9JA

Price £375,000

FINAL PLOT ON SMALL EXECUTIVE DEVELOPMENT - AVAILABLE FOR IMMEDIATE OCCUPATION

We are delighted to offer to the market this brand new 177 sq. m. / 1907 sq. ft. four-bedroom detached family home with integral garage set in a semi-rural position on the outskirts of the highly sought-after village of Lilliesleaf, just a short drive from Melrose and readily commutable to Edinburgh.

The property benefits from a 10 year new build guarantee, high quality fixtures & fittings and air source heat pump.

ACCOMMODATION

- ENTRANCE HALLWAY - OPEN-PLAN KITCHEN / FAMILY ROOM - LOUNGE - CLOAKROOM - HALL LANDING - PRINCIPAL BEDROOM (WITH EN-SUITE SHOWER ROOM) - THREE FURTHER DOUBLE BEDROOMS - FAMILY BATHROOM -

Accommodation

Set over 2 floors with an internal floor area of 177 sq. m. / 1907 sq. ft. (or thereby), this detached property offers free-flowing, spacious accommodation over two floors, with fine views over the surrounding countryside.

The ground floor is perfectly suited for modern living, with a generous kitchen/dining/family room and south facing living room both with direct access to the garden. Off the kitchen, the utility room also benefits from outside access, as well as a door leading into the integrated garage.

Upstairs, the master bedroom boasts an ensuite shower room, while the three further bedrooms are served by a family bathroom.

The garage and driveway provide ample parking.

Accommodation generally comprises:

ENTRANCE HALLWAY, LIVING ROOM, KITCHEN / DINING ROOM, UTILITY ROOM, WC, STUDY, FAMILY BATHROOM, MASTER BEDROOM WITH EN-SUITE SHOWER ROOM and 3 FURTHER BEDROOMS.

St Dunstans - The Development

Plot 1 forms part of the wider St Dunstan Development, with 7 new homes by local Borders developer Smith & McMath.

Each home has been individually designed to provide spacious and well-equipped accommodation with modern fixtures and fittings throughout as well as a 10 Year Premier Guarantee Warranty.

Estimated completion dates will be provided per property upon reservation.

Location

Lilliesleaf is an attractive village nestled in the midst of the Scottish Borders countryside, enjoying a wonderful sense of community with an excellent Primary school, village hall, pub, church and a golf course nearby. Located only a short drive from the beautiful town of Melrose with its specialist independent shops, resting on the banks of the River Tweed and well known for its historic Abbey, the Melrose Sevens and the Borders Book Festival. Further amenities can be found in nearby Selkirk and Galashiels, with Tweedbank providing a rail connection to

Edinburgh. The surrounding countryside and rolling hills are popular with golfers, walkers, cyclists and equestrian enthusiasts and the village location will appeal to those with an interest in country pursuits looking for a peaceful quality of life.

Services

Mains water, electricity and drainage.

Telephone / broadband / TV connection points.

Dual zone space heating is provided via a Vaillant air source heat pump serving panelled radiators. Hot water is provided via an unvented cylinder.

uPVC Double Glazing.

Viewings / Notes of Interest

To register your interest in this stunning home by Smith & McMath, or to book a site visit, please contact us on 01896 808 777 or email enquiries@jamesagent.co.uk.

Disclaimer

Although every care has been taken to ensure the accuracy of all the information provided, the contents of the marketing materials and any supporting information provided do not form part of any contract, or constitute a representation of warranty, and as such should be treated as a guide only. Details should be confirmed with the Selling Agent and the interested party is advised to consult their solicitor. External landscaping is for illustration purposes only.



Floor Plan

Plot 1 St. Dunstans

Approximate Gross Internal Area = 177.2 sq m / 1907 sq ft
(including Garage)

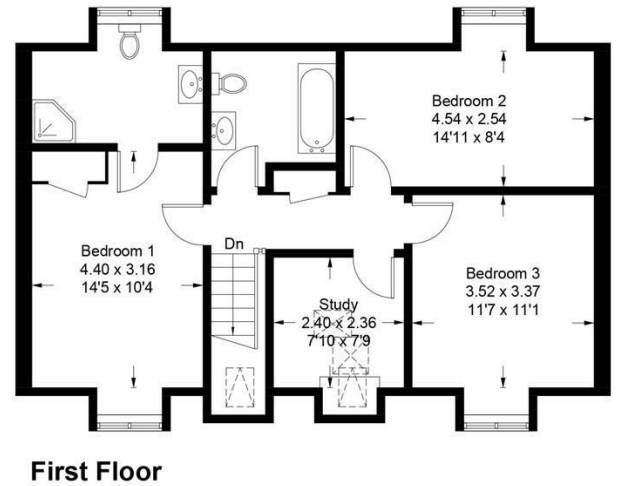
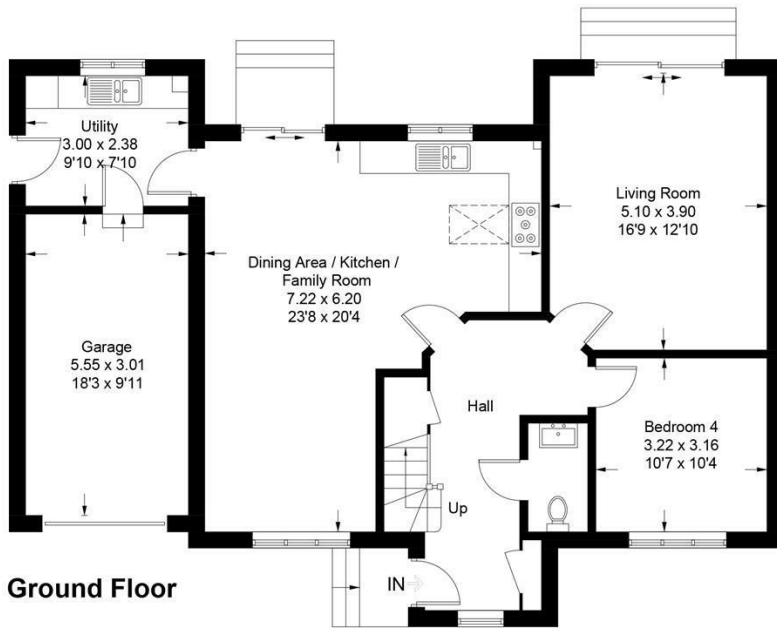
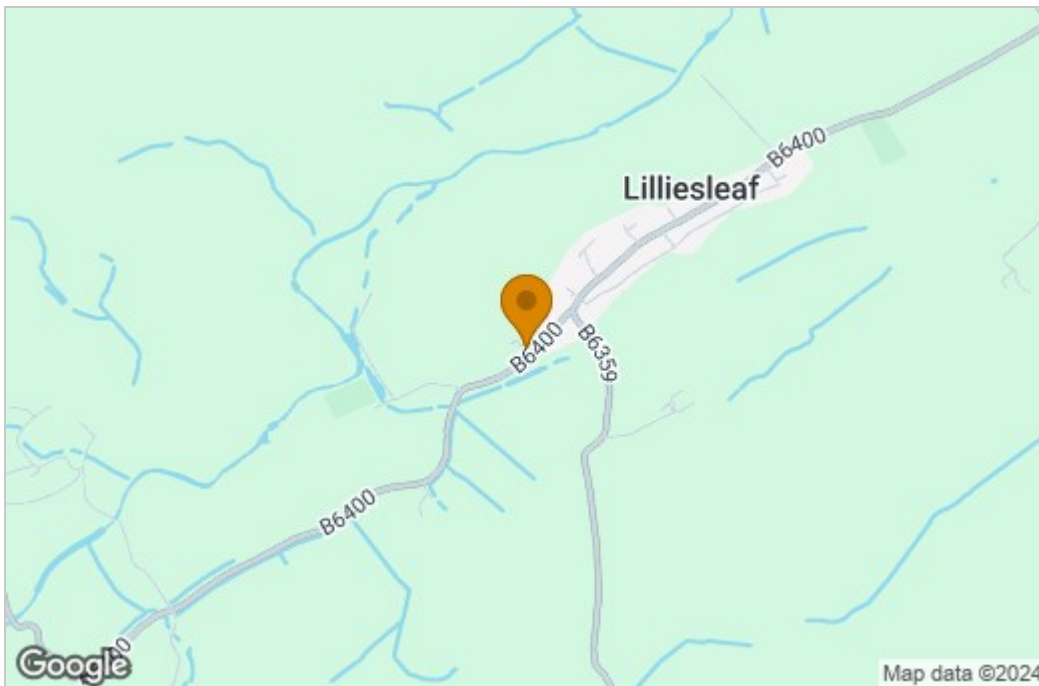
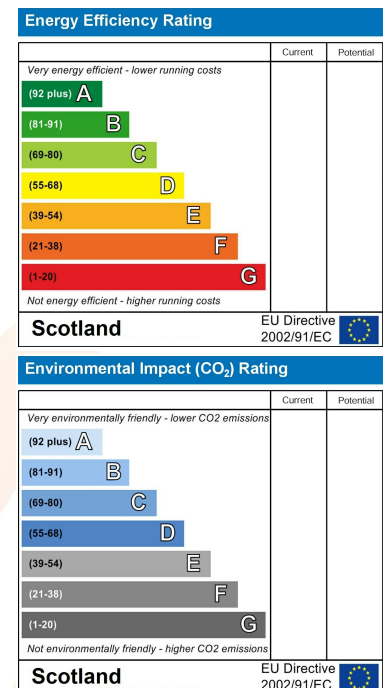


Illustration for identification purposes only, measurements are approximate, not to scale. floorplansUsketch.com © (ID928455)

Area Map



Energy Efficiency Graph



These particulars, whilst believed to be accurate are set out as a general outline only for guidance and do not constitute any part of an offer or contract. Intending purchasers should not rely on them as statements of representation of fact, but must satisfy themselves by inspection or otherwise as to their accuracy. No person in this firm's employment has the authority to make or give any representation or warranty in respect of the property.