

oakheart

£1,850 Per Month

Per Month

Cap Pillar Close, Wivenhoe



A newly refurbished four bedroom bungalow which is situated within the popular location of Wivenhoe. The property is just a short drive back to Colchester whilst there are also a host of shops, restaurants and local attractions nearby.

The accommodation comprises of a large lounge, newly fitted kitchen/diner with an integrated oven and space for

appliances, three double bedrooms with fitted storage, a single bedroom with fitted storage and a modern bathroom with a shower over the bath. Externally there is a large rear garden, garage and driveway parking. The property has undergone a full refurbishment including new carpets, flooring and a full redecoration.

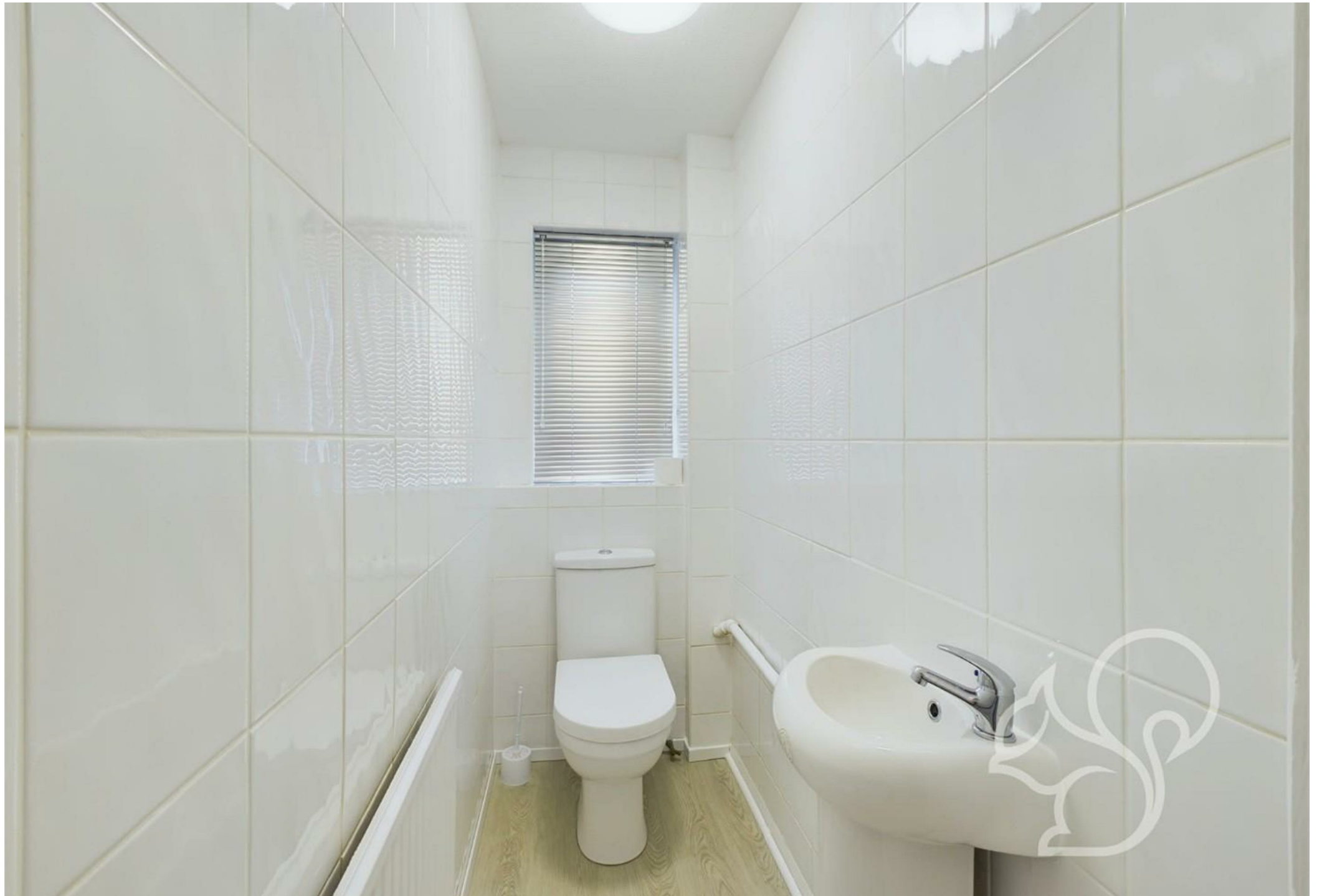
The property is offered unfurnished and available now.

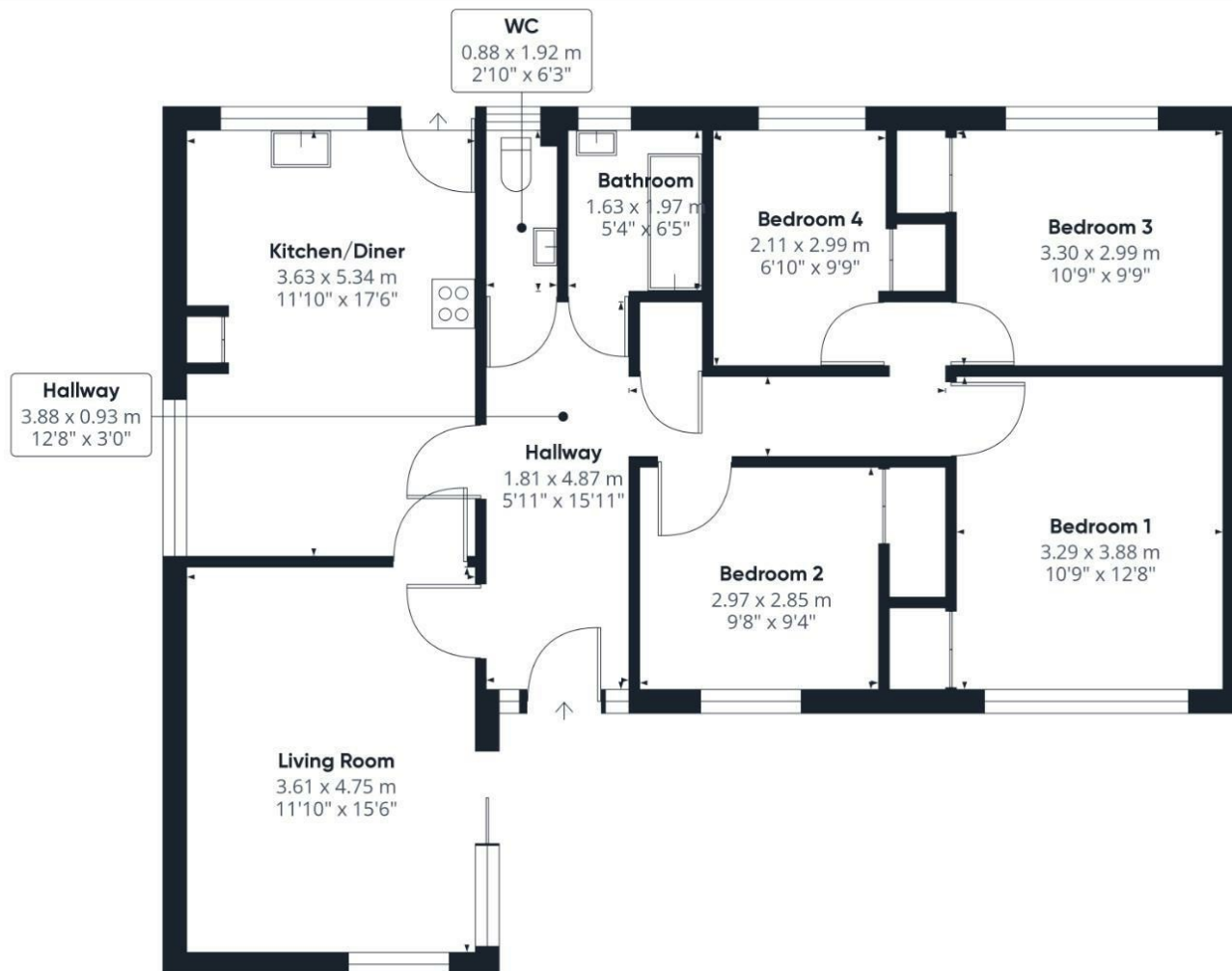
Call the Oakheart lettings team for further information.











Local Authority:

£2458

Tenure:

Council Tax Band:

E

Energy Efficiency Rating

	Current	Potential
Very energy efficient - lower running costs		
(92 plus) A		
(81-91) B		84
(69-80) C	69	
(55-68) D		
(39-54) E		
(21-38) F		
(1-20) G		
Not energy efficient - higher running costs		
England & Wales	EU Directive 2002/91/EC	

Agents Note: Whilst every care has been taken to prepare these particulars, they are for guidance purposes only. All measurements are approximate and are for general guidance purposes only and whilst every care has been taken to ensure their accuracy, they should not be relied upon.

Oakheart Colchester - Lettings
01206 803 303
essexlettings@oakheart.co.uk
2b Cotman Road, Colchester, Essex, CO3 4QJ

oakheart