

oakheart



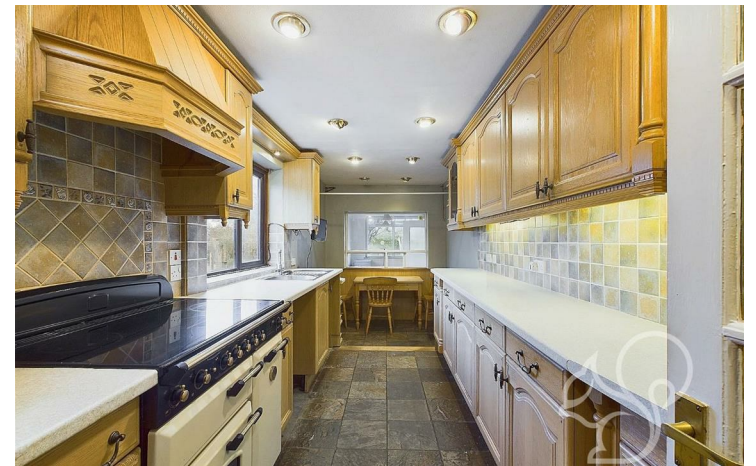
£650,000

Asking Price

Easthorpe Road, Easthorpe



This exceptional three-bedroom Grade II Listed farmhouse is a rare historic gem, dating back to 1350 and once serving as a Royal Hunting Lodge. Steeped in rich history, this remarkable home seamlessly combines period charm with modern comforts. One of its most notable features is the original inglenook fireplace, which was relocated to Colchester Castle but has been meticulously reconstructed using authentic reclaimed materials from the era by the previous owner.











Local Authority:
Colchester

Tenure:
Freehold

Council Tax Band:
F

Energy Efficiency Rating

	Current	Potential
<i>Very energy efficient - lower running costs</i>		
(92 plus) A		
(81-91) B		
(69-80) C		
(55-68) D		
(39-54) E		
(21-38) F		
(1-20) G		
<i>Not energy efficient - higher running costs</i>		
England & Wales	EU Directive 2002/91/EC	

Agents Note: Whilst every care has been taken to prepare these particulars, they are for guidance purposes only. All measurements are approximate and are for general guidance purposes only and whilst every care has been taken to ensure their accuracy, they should not be relied upon.

Oakheart Colchester
 01206 803 308
 colchester@oakheart.co.uk
 2b Cotman Road, Colchester, Essex, CO3 4QJ

oakheart