

oakheart

£200,000

Asking Price

Berechurch Road, Colchester



Positioned on the third floor as part of the 'penthouse collection', this impressive two-bedroom apartment offers stylish and contemporary living in a highly sought-after location. Situated in the South of Colchester, it provides convenient access to local amenities and excellent transport links, making it an ideal home for professionals, couples, or small families.

The property features a welcoming front entrance porch that leads into a spacious hallway. The large principal bedroom is a great size, while the second bedroom is a well-sized double, suitable for guests or a home office. A sleek and modern family bathroom adds both functionality and style. There is also a large utility cupboard, offering ample storage and a practical space for household needs.

At the heart of the apartment is the expansive open-plan lounge, kitchen, and dining area, designed to maximize space and natural light. The kitchen is fitted with generous worktop and cupboard space.

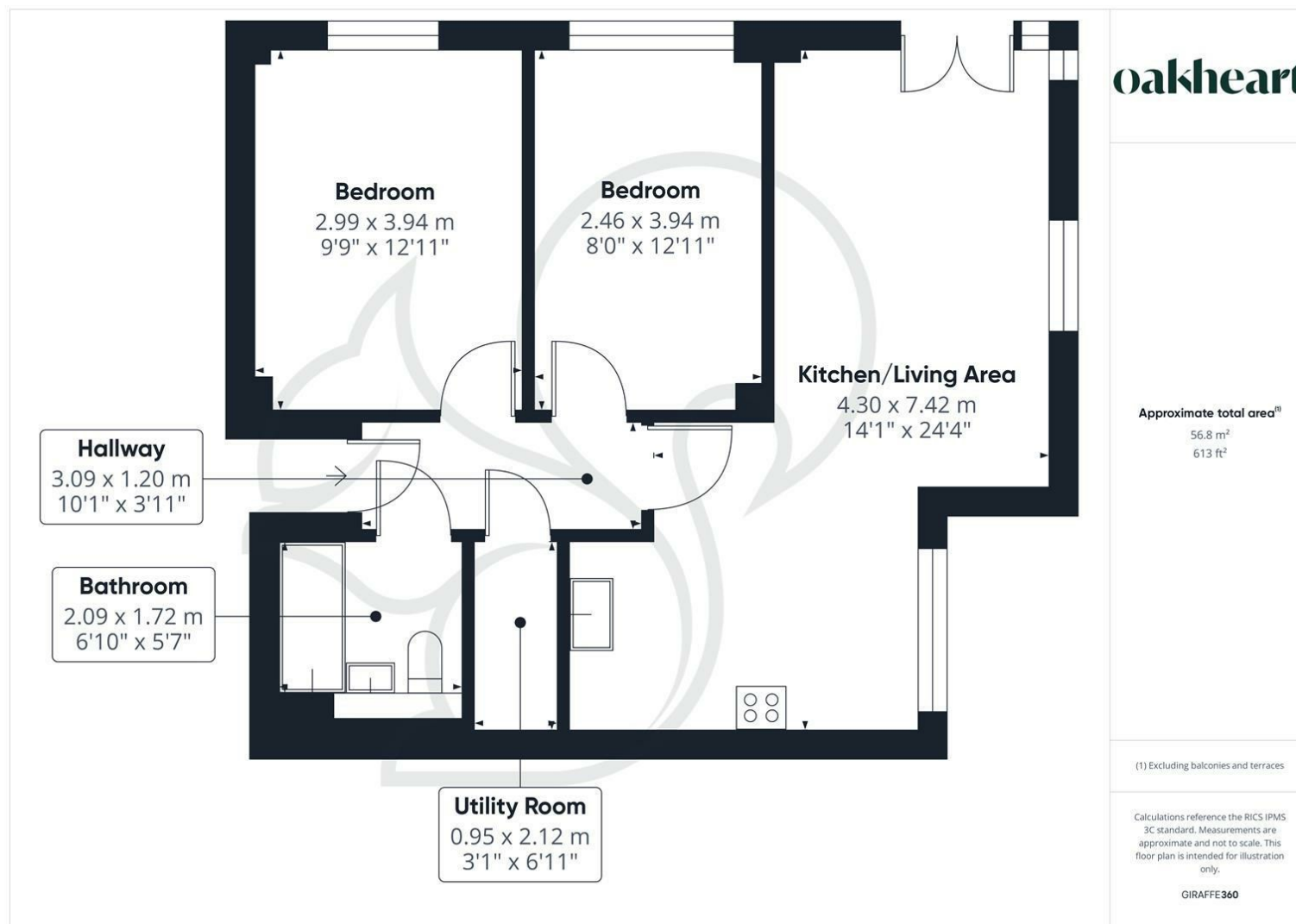
Externally, the property enjoys access to well-maintained communal garden, playground & herb garden, an allocated parking space, and additional visitor parking, ensuring both practicality and convenience.







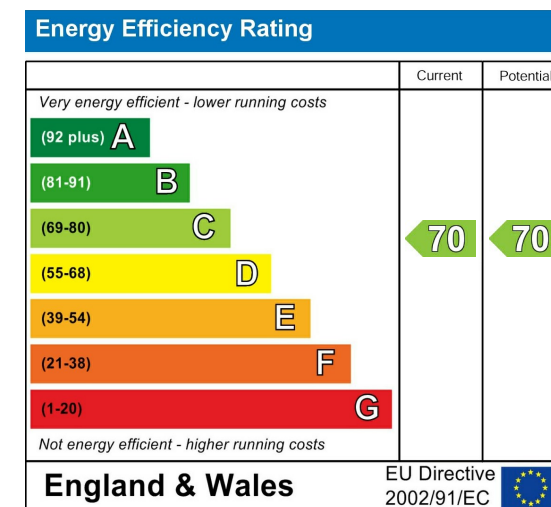




Local Authority:
Colchester

Tenure:
Leasehold

Council Tax Band:
B



Agents Note: Whilst every care has been taken to prepare these particulars, they are for guidance purposes only. All measurements are approximate and are for general guidance purposes only and whilst every care has been taken to ensure their accuracy, they should not be relied upon.