

oakheart



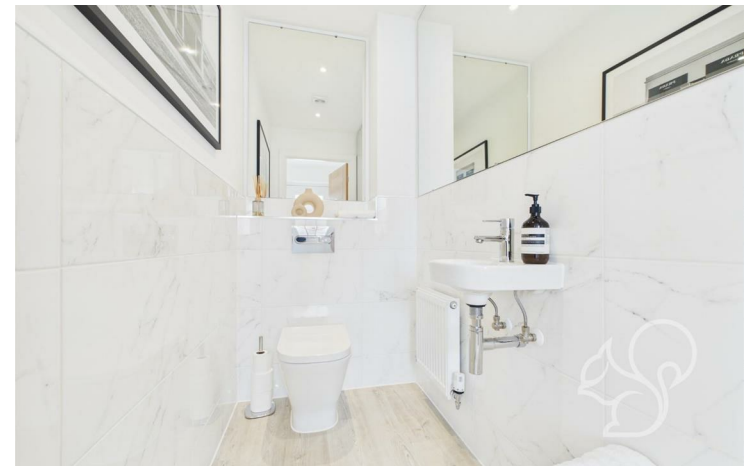
£300,000

Guide Price
Pine Way, Elmstead

Guide Price: £300,000 - £325,000.

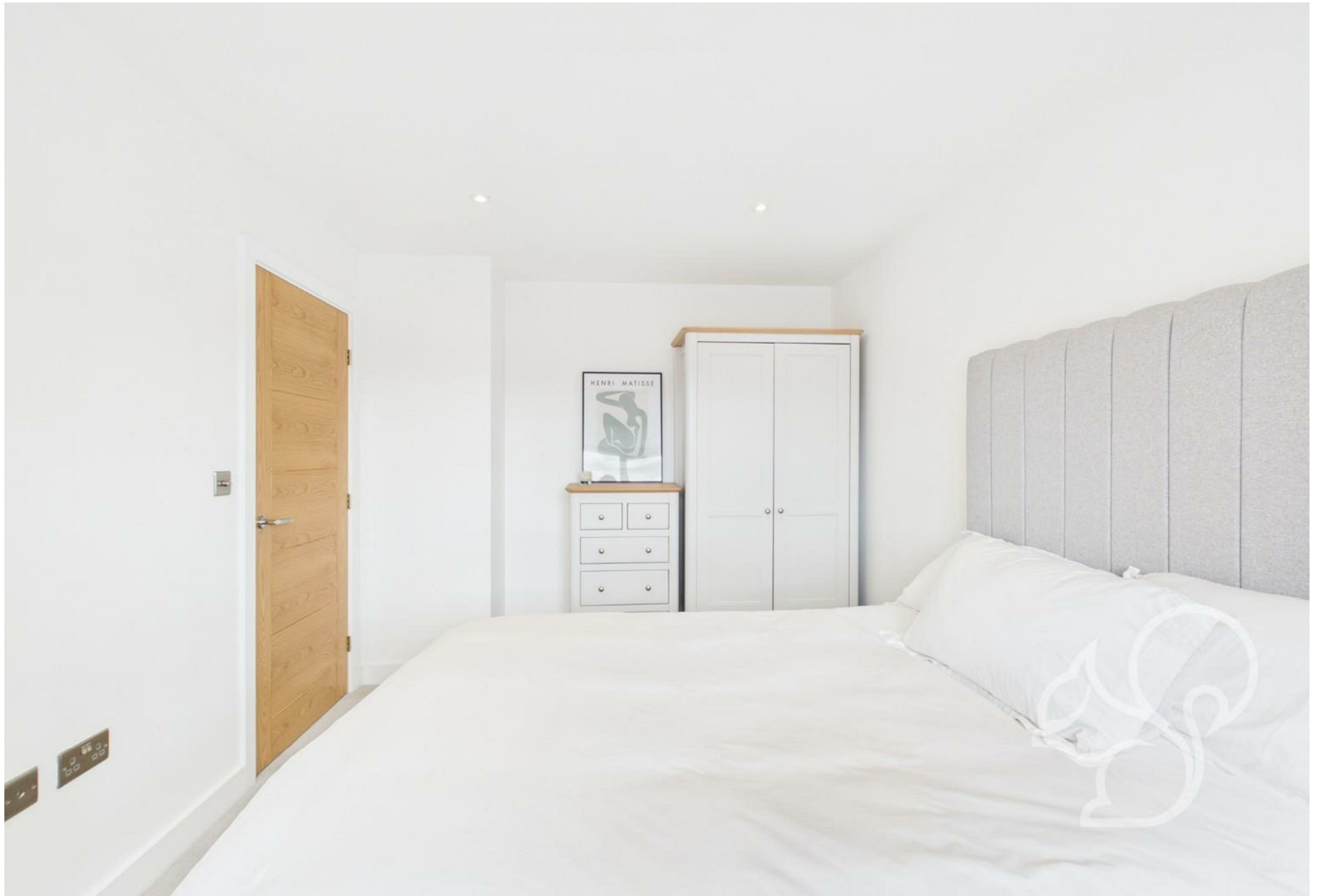
A beautifully presented and thoughtfully enhanced two-bedroom end-of-terrace home, boasting superb specifications and meticulous attention to detail throughout. This stylish residence is perfectly suited to first-time buyers and comes to the market with the distinct advantage of no onward chain. Built by the

well-regarded 'Hills Residential', the property benefits from the remainder of a 10-year warranty, offering additional peace of mind.











oakheart

Local Authority:
Tendring

Tenure:
Freehold

Council Tax Band:
C

Energy Efficiency Rating

	Current	Potential
Very energy efficient - lower running costs		
(92 plus) A		95
(81-91) B	83	
(69-80) C		
(55-68) D		
(39-54) E		
(21-38) F		
(1-20) G		
Not energy efficient - higher running costs		
England & Wales	EU Directive 2002/91/EC	

Agents Note: Whilst every care has been taken to prepare these particulars, they are for guidance purposes only. All measurements are approximate and are for general guidance purposes only and whilst every care has been taken to ensure their accuracy, they should not be relied upon.

Oakheart Colchester
01206 803 308
colchester@oakheart.co.uk
2b Cotman Road, Colchester, Essex, CO3 4QJ

oakheart