

oakheart

£950 Per Month

Per Month

Crouch Street, Colchester

Located in the heart of Colchester's city centre, is this ground floor one bedroom apartment. Benefitting from an abundance of local amenities on the doorstep including retail, food and leisure facilities. The property sits within walking distance of easy bus routes to North Station for major city links including London Liverpool Street, Chelmsford, etc.

Fitted to a high standard and contemporary in style, the

accommodation comprises of open plan living with dual aspect windows for plenty of natural lighting and a modern kitchen, fitted with integrated appliances including a fridge/freezer, oven and a washing machine. Ideal for a couple or single occupier, the property further provides a generous double bedroom with fitted wardrobes and with a stylish bathroom suite.

Enhanced with a communal lift, an intercom phone

entry system and a bike store.

Please note that there is no parking with this property.

Call the Oakheart Lettings team today to arrange a viewing!



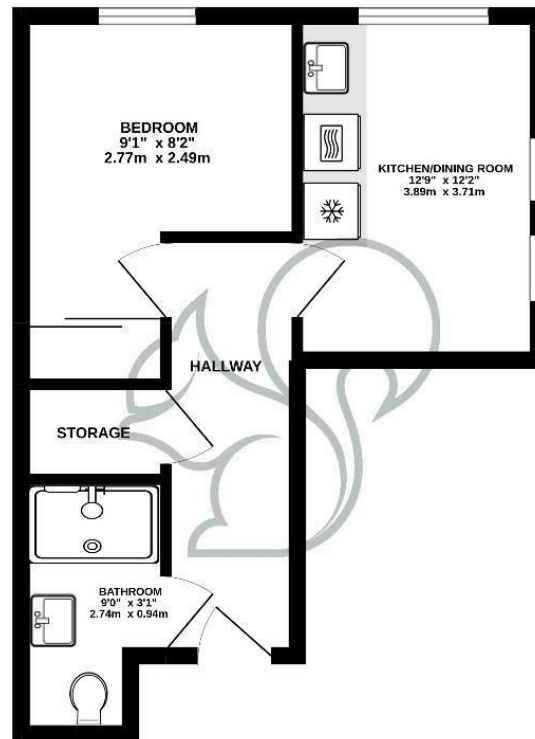








GROUND FLOOR  
308 sq.ft. (28.6 sq.m.) approx.



TOTAL FLOOR AREA: 308 sq.ft. (28.6 sq.m.) approx.  
Whilst every attempt has been made to ensure the accuracy of the floorplan contained here, measurements of doors, windows, rooms and any other items are approximate and no responsibility is taken for any error, omission or mis-statement. This plan is for illustrative purposes only and should be used as such by any prospective purchaser. The services, systems and appliances shown have not been tested and no guarantee as to their operability or efficiency can be given.  
Made with Metrepro 50022

Local Authority:  
Colchester

Tenure:

Council Tax Band:  
A

### Energy Efficiency Rating

	Current	Potential
Very energy efficient - lower running costs		
(92 plus) <b>A</b>		
(81-91) <b>B</b>		
(69-80) <b>C</b>	69	69
(55-68) <b>D</b>		
(39-54) <b>E</b>		
(21-38) <b>F</b>		
(1-20) <b>G</b>		
Not energy efficient - higher running costs		
<b>England &amp; Wales</b>	EU Directive 2002/91/EC	

Agents Note: Whilst every care has been taken to prepare these particulars, they are for guidance purposes only. All measurements are approximate and are for general guidance purposes only and whilst every care has been taken to ensure their accuracy, they should not be relied upon.

Oakheart Lettings - Essex  
01206 803 303  
essexlettings@oakheart.co.uk  
2b Cotman Road, Colchester, Essex, CO3 4QJ

**oakheart**