

oakheart

£230,000

Guide Price

Hedge Drive, Colchester





Guide Price: £230,000 - £240,000.

Situated on the ever-popular Hedge Drive in Shrub End, this generously proportioned two-bedroom first-floor maisonette offers a fantastic blend of modern upgrades, spacious interiors, and excellent outdoor space. Boasting a newly fitted kitchen, recently laid driveway, and a large private garden, the property is ideally located close to well-regarded schools, local amenities, and convenient transport links.

Accessed via a private front door, the entrance hall provides useful

storage and leads to a staircase rising to the main living accommodation on the first floor.

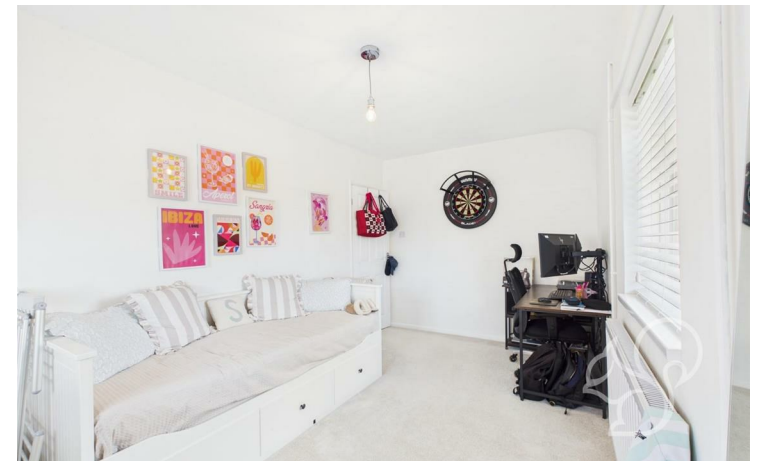
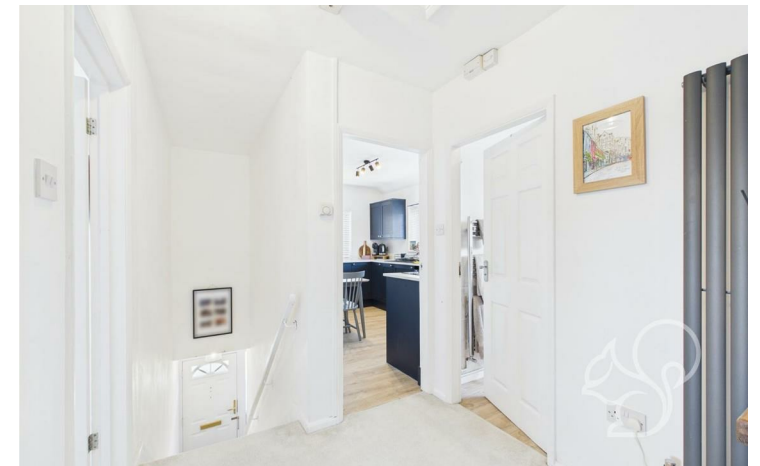
The first-floor landing leads to a beautifully appointed navy shaker-style kitchen/diner, featuring an abundance of cupboard and worktop space—perfect for entertaining or everyday family living. The light-filled living room is well presented and includes a handy built-in storage cupboard.

The generous principal bedroom easily accommodates large furniture, while the second bedroom is also a comfortable double

with its own storage cupboard. The family bathroom comprises a full-sized bath with overhead shower, WC, and wash basin.

Directly outside the front entrance is a garden area with multiple brick-built storage outbuildings, one of which benefits from power—ideal as a workshop or hobby space. Beyond this is a substantial private garden, mainly laid to lawn, with a newly laid patio area and attractive pergola, offering a great space for outdoor entertaining. A rear gate provides access to a private parking space.

To the front of the property, a recently laid driveway offers ample off-road parking for multiple vehicles.



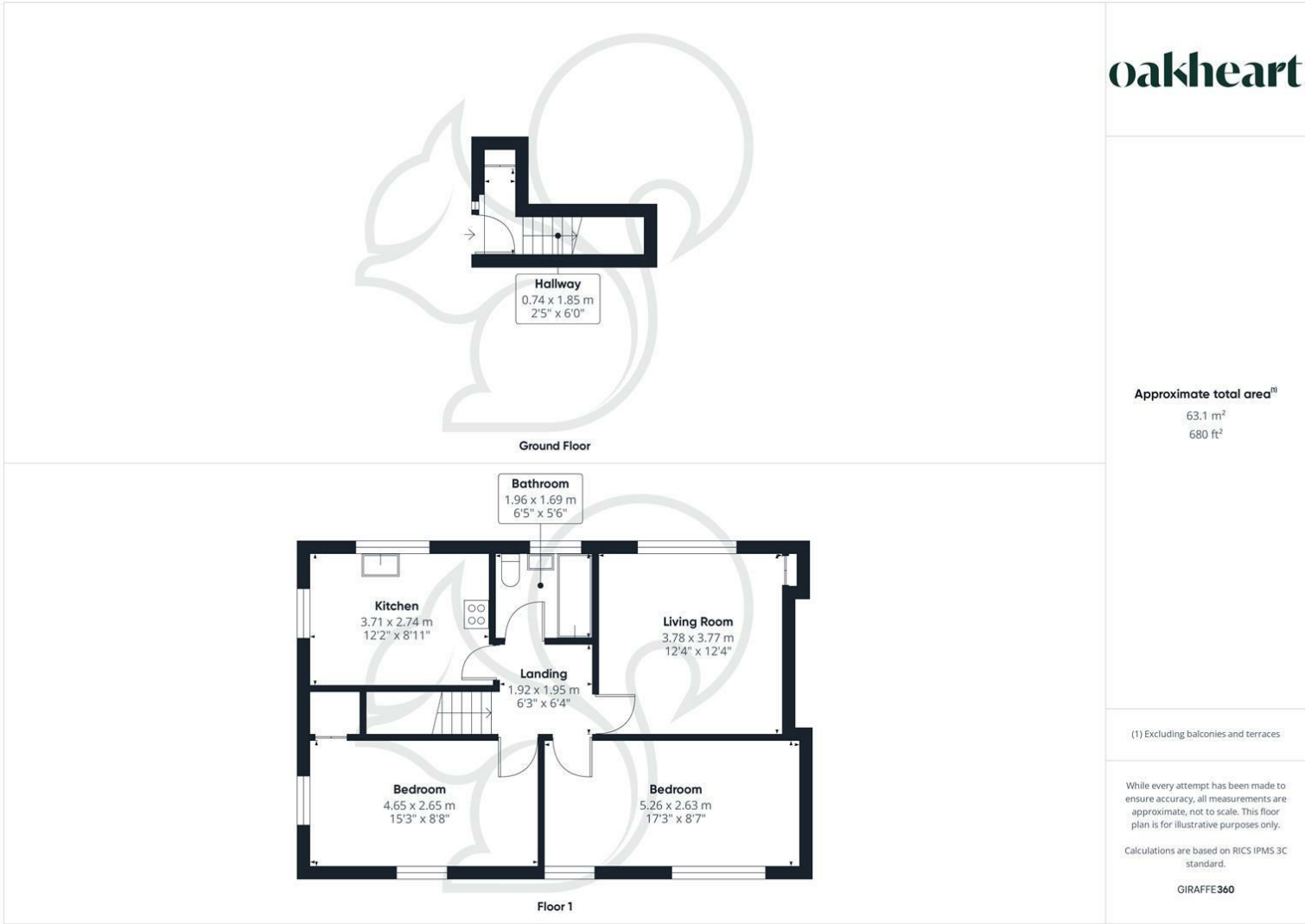








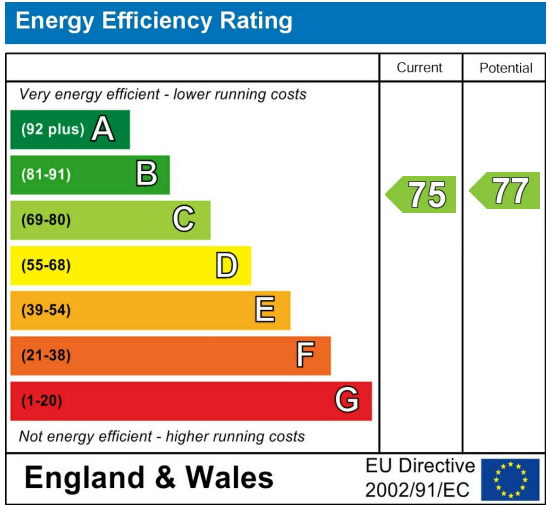




Local Authority:  
Colchester

Tenure:  
Leasehold

Council Tax Band:  
B



Agents Note: Whilst every care has been taken to prepare these particulars, they are for guidance purposes only. All measurements are approximate and are for general guidance purposes only and whilst every care has been taken to ensure their accuracy, they should not be relied upon.