

oakheart

£475,000

Guide Price

Winterbourne Gardens, Elmstead

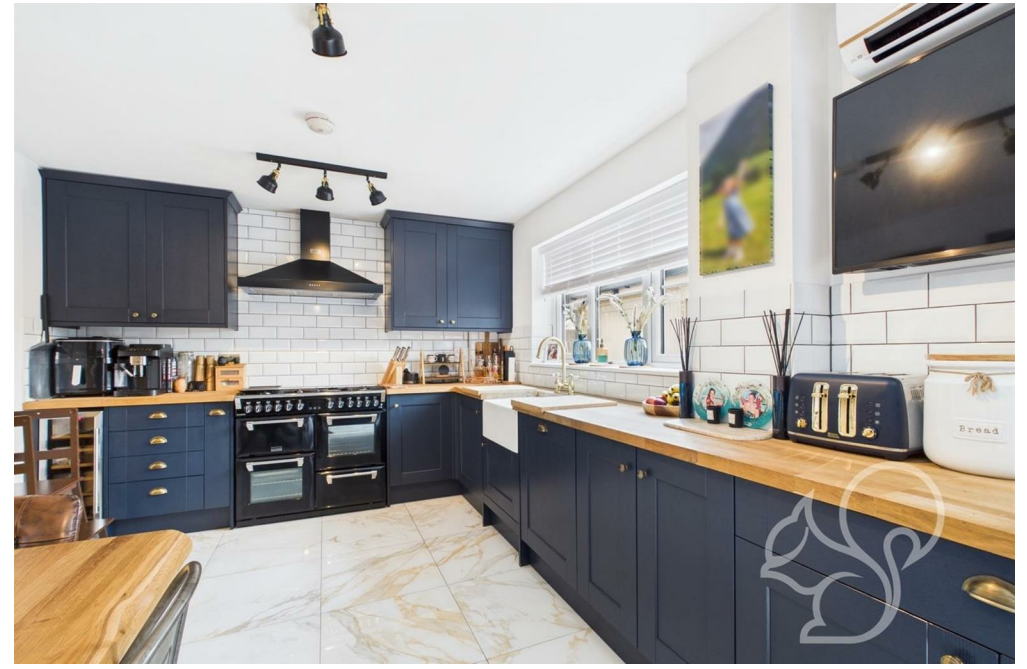
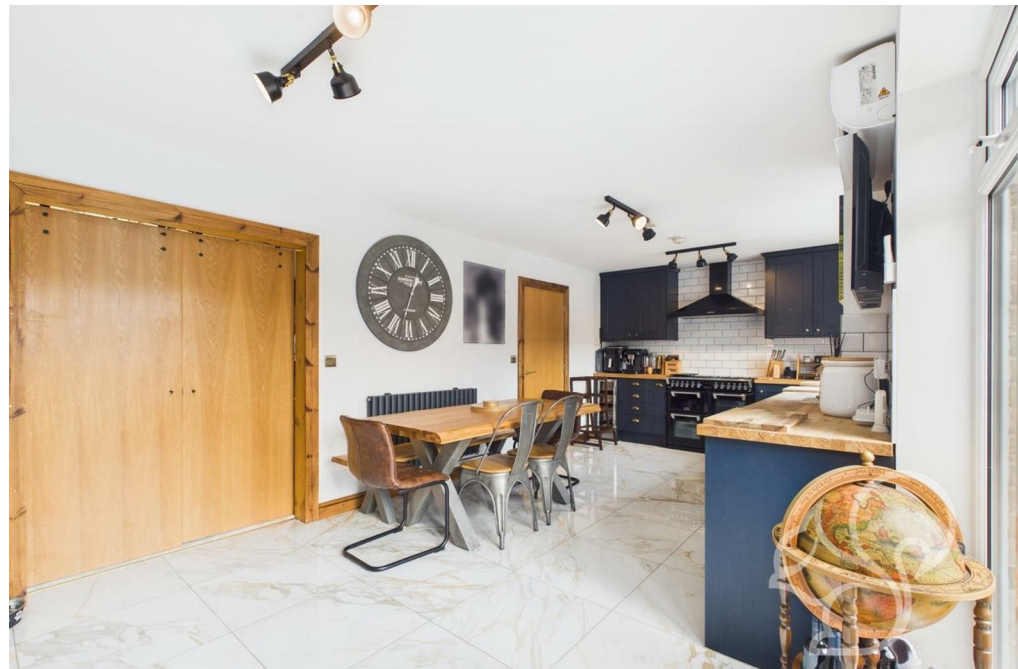
Guide price of £475,000 to £500,000.

Situated in the heart of the desirable village of Elmstead, this exceptional four-bedroom, two-bathroom detached family home offers generous living space and stylish interiors throughout. Conveniently located within close proximity to local amenities, two well-regarded schools, and Alresford

Train Station—providing direct links into London Liverpool Street—this home is perfect for families and commuters alike.











Ground Floor Building 1



Floor 1 Building 1



Ground Floor Building 2



Ground Floor Building 3

oakheart

Approximate total area[®]
122.75 m²
1321.26 ft²

(1) Excluding balconies and terraces

While every attempt has been made to ensure accuracy, all measurements are approximate, not to scale. This floor plan is for illustrative purposes only.

Calculations are based on RICS IPMS 3C standard.


GIRAFFE360

Local Authority:
Tendring

Tenure:
Freehold

Council Tax Band:
E

Energy Efficiency Rating

	Current	Potential
Very energy efficient - lower running costs		
(92 plus) A		94
(81-91) B	84	
(69-80) C		
(55-68) D		
(39-54) E		
(21-38) F		
(1-20) G		
Not energy efficient - higher running costs		
England & Wales	EU Directive 2002/91/EC 	

Agents Note: Whilst every care has been taken to prepare these particulars, they are for guidance purposes only. All measurements are approximate and are for general guidance purposes only and whilst every care has been taken to ensure their accuracy, they should not be relied upon.

Oakheart Colchester
01206 803 308
colchester@oakheart.co.uk
2b Cotman Road, Colchester, Essex, CO3 4QJ

oakheart