

oakheart

£1,300 Per Month

Per Month

Reymead Close, West Mersea

Welcome to this beautifully refurbished semi-detached home located in the picturesque setting of Mersea Island. This stunning property boasts three spacious bedrooms, making it ideal for families or those seeking extra space.

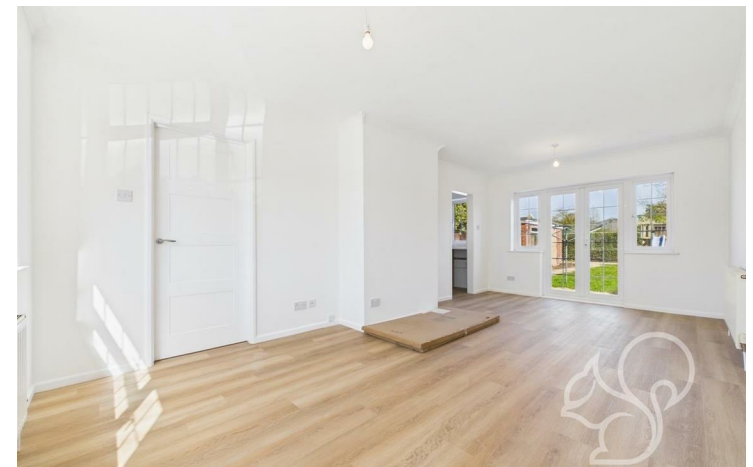
As you enter, you'll be greeted by a bright and airy hallway leading to a generously sized living room, perfect for relaxation and entertaining. The contemporary design features large windows that flood the space with natural light, creating a warm and

inviting atmosphere.

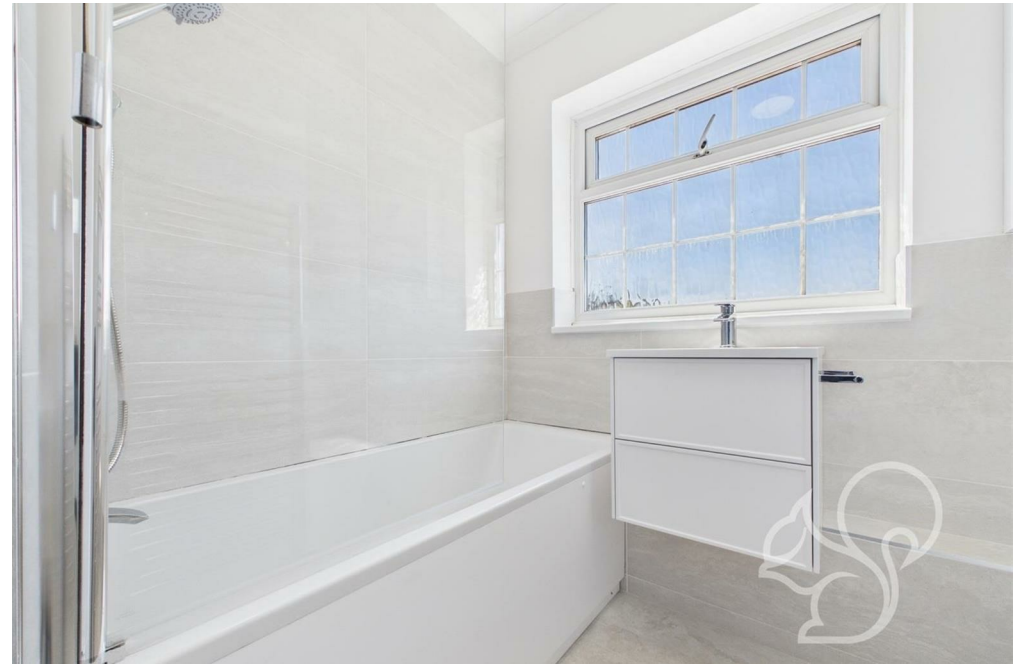
The modern kitchen providing both style and functionality. The open-plan layout seamlessly connects the kitchen to the dining area, making it perfect for family gatherings or hosting friends. Step outside to discover a charming rear garden, offering plenty of space for outdoor activities, gardening, or simply enjoying the fresh air. The large driveway provides ample parking for multiple vehicles, ensuring convenience for you and your guests.

This home is ideally located within easy reach of local amenities, schools, and the stunning coastline, making it a fantastic opportunity for those looking to embrace the Mersea Island lifestyle.

Call the Oakheart lettings team for further information.



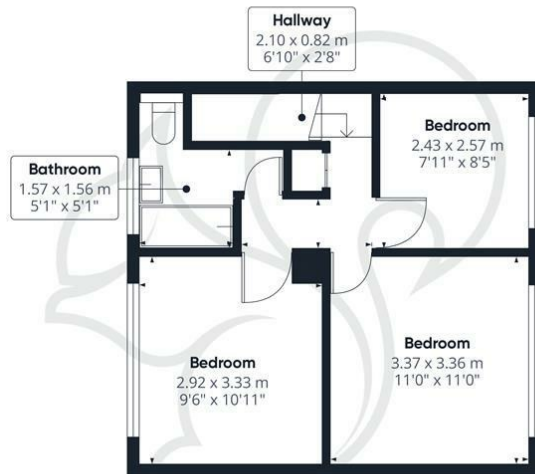








Ground Floor



Floor 1

oakheart

Approximate total area[®]
70.56 m²
759.52 ft²

(1) Excluding balconies and terraces

While every attempt has been made to ensure accuracy, all measurements are approximate, not to scale. This floor plan is for illustrative purposes only.

Calculations are based on RICS IPMS 3C standard.


GIRAFFE360

Local Authority:
Colchester

Tenure:

Council Tax Band:
C

Energy Efficiency Rating

	Current	Potential
<i>Very energy efficient - lower running costs</i>		
(92 plus) A		85
(81-91) B		
(69-80) C		
(55-68) D	68	
(39-54) E		
(21-38) F		
(1-20) G		
<i>Not energy efficient - higher running costs</i>		
England & Wales	EU Directive 2002/91/EC 	

Agents Note: Whilst every care has been taken to prepare these particulars, they are for guidance purposes only. All measurements are approximate and are for general guidance purposes only and whilst every care has been taken to ensure their accuracy, they should not be relied upon.

Oakheart Lettings - Colchester
01206 803 303
pm@oakheart.co.uk
2b Cotman Road, Colchester, Essex, CO3 4QJ

oakheart