

# oakheart

**£1,700 Per Month**

Per Month

Regina Road, Victoria Road,  
Chelmsford





Discover the ultimate in modern living at this breathtaking top-floor apartment, nestled in the highly desirable Bellway development on Regina Road, CM1. Situated just a stone's throw from Chelmsford City Centre and the railway station, this property seamlessly combines convenience with contemporary style.

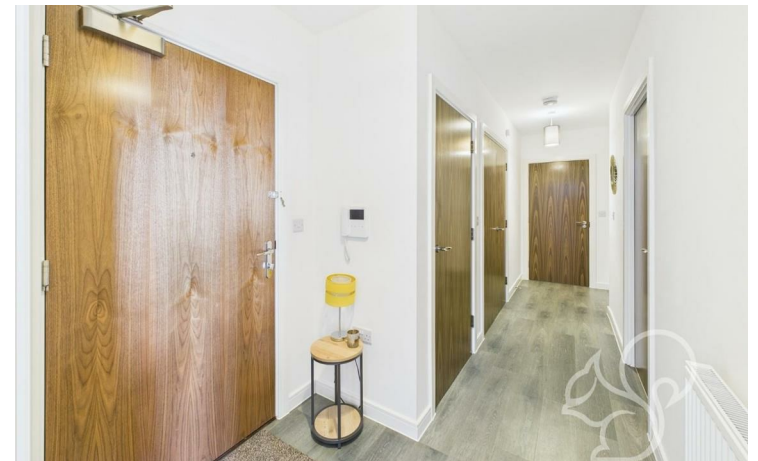
Inside, you will find two double bedrooms, with the primary bedroom offering the luxury of an en-suite bathroom for

enhanced privacy and comfort. A beautifully appointed family bathroom serves the second bedroom and guests, while the entrance hall provides effortless access to all areas of the home. The open-plan kitchen and living area is a haven for relaxation and entertainment, flowing seamlessly onto a generous private balcony that boasts panoramic views stretching from north to east to south.

This exceptional residence also benefits from electric-fired

central heating, an allocated parking space, an entry-phone system, and lift access to all floors. Its prime location places you within easy reach of the Riverside Leisure Centre, retail parks, a diverse array of restaurants and pubs, and picturesque riverside walks that lead directly into the heart of the city. For commuters, Chelmsford rail station offers excellent connectivity, including a direct link to Liverpool Street, London.

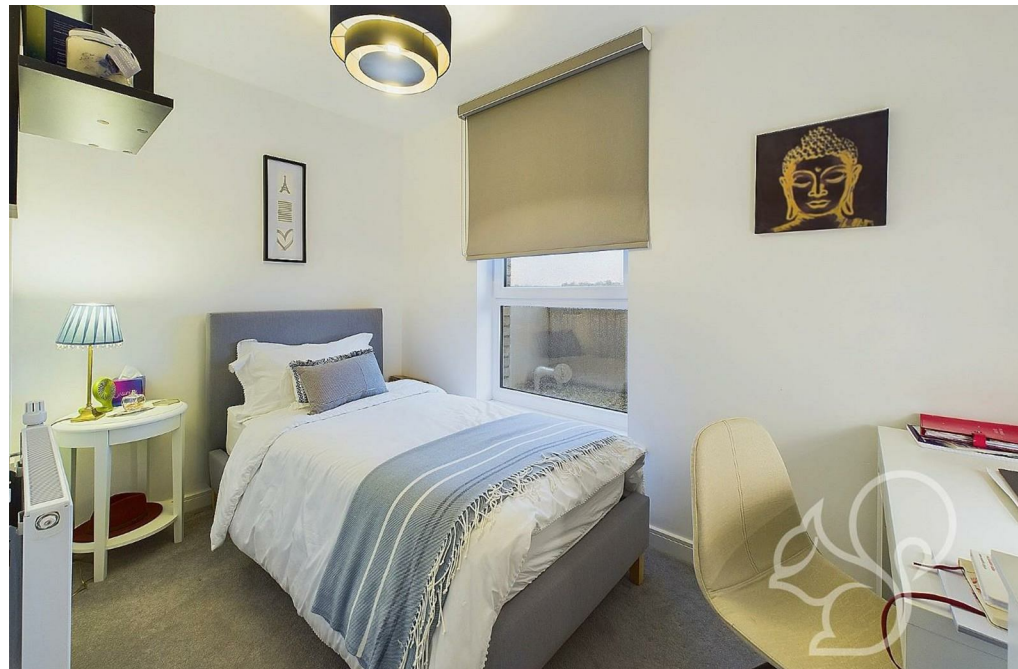
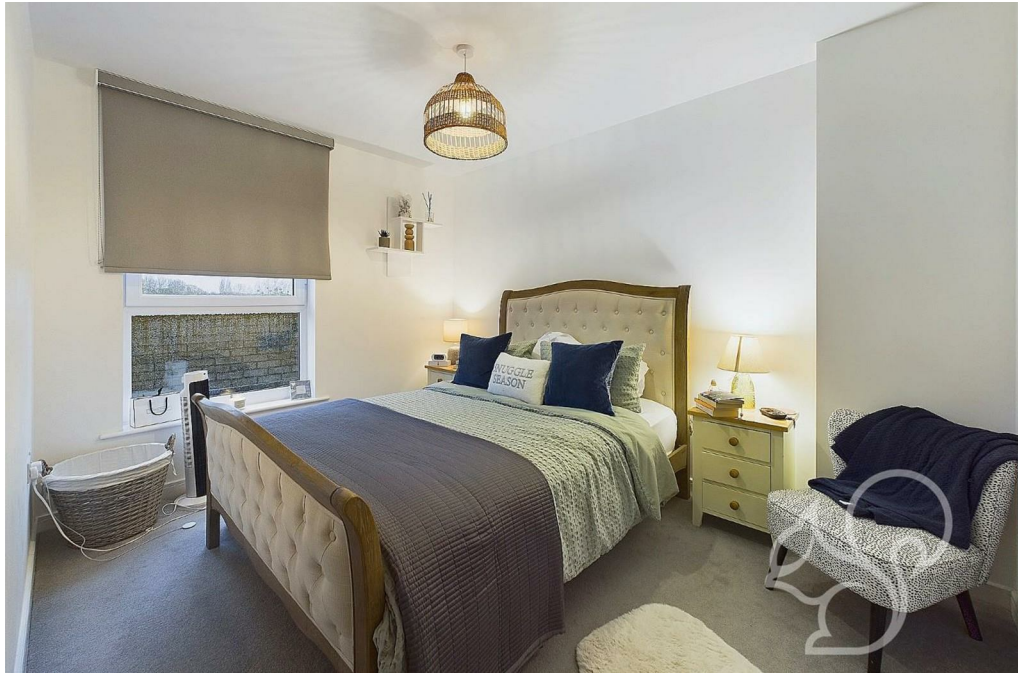
Call the Oakheart lettings team to schedule a viewing.







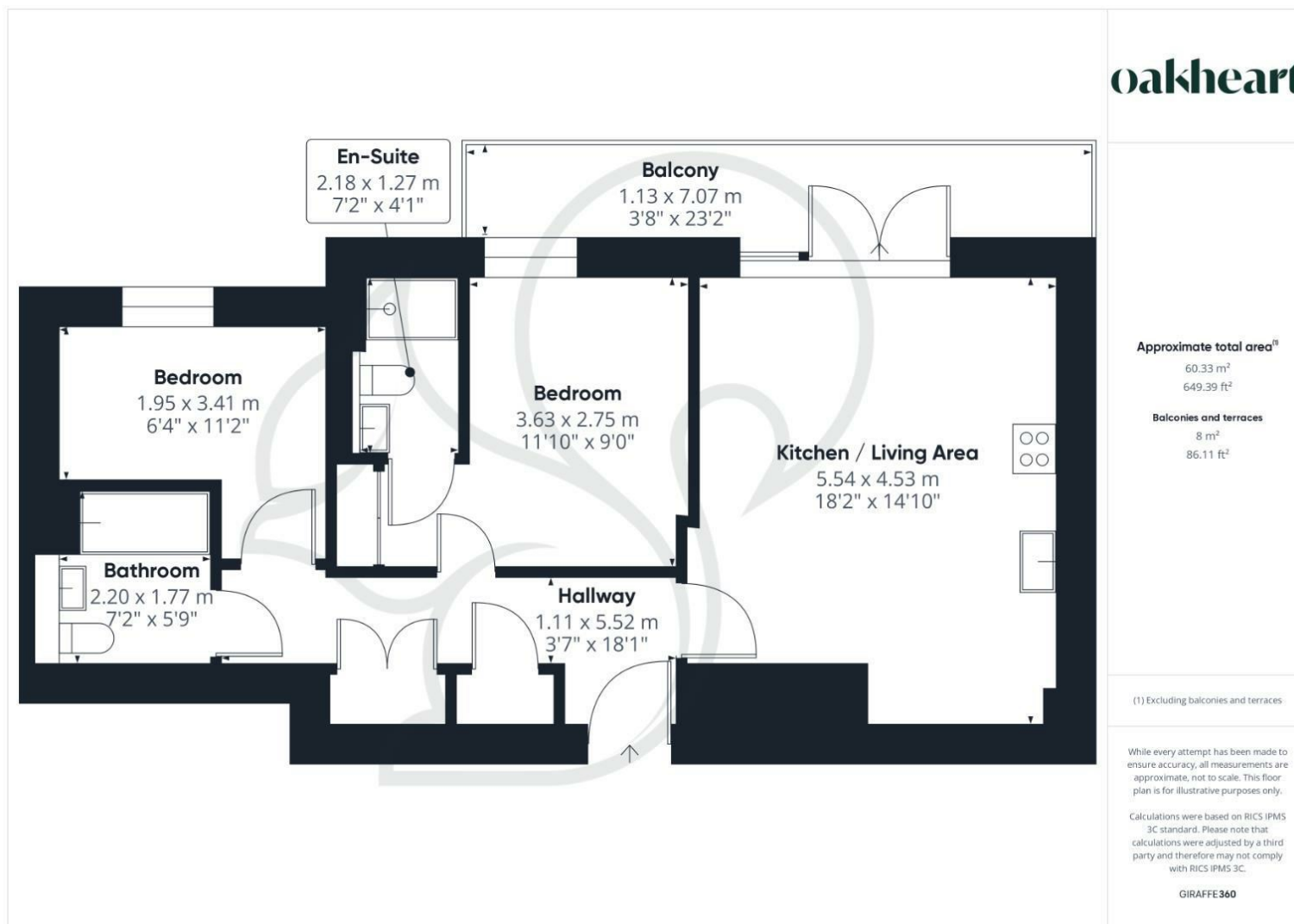












**oakheart**

**Local Authority:**  
Chelmsford City Council

**Tenure:**

**Council Tax Band:**  
E

### Energy Efficiency Rating

	Current	Potential
Very energy efficient - lower running costs		
(92 plus) <b>A</b>		
(81-91) <b>B</b>	82	82
(69-80) <b>C</b>		
(55-68) <b>D</b>		
(39-54) <b>E</b>		
(21-38) <b>F</b>		
(1-20) <b>G</b>		
Not energy efficient - higher running costs		
<b>England &amp; Wales</b> EU Directive 2002/91/EC		

Agents Note: Whilst every care has been taken to prepare these particulars, they are for guidance purposes only. All measurements are approximate and are for general guidance purposes only and whilst every care has been taken to ensure their accuracy, they should not be relied upon.

Oakheart Lettings - Essex  
01206 803 303  
pm@oakheart.co.uk  
2b Cotman Road, Colchester, Essex, CO3 4QJ

**oakheart**