

oakheart

£469,950

Plot 57, Ufford Chase

Nestled in the charming village of Great Bentley, the Kiswick at Ufford Chase offers an exceptional 3-bedroom detached home with a garage, designed with a spacious layout perfect for modern living. The ground floor features an open-plan kitchen and dining area ideal for family gatherings and entertaining, along with a separate living room for relaxation, a convenient WC, and storage space. Upstairs, you will find three well-proportioned bedrooms, including a master with an en-suite, a family bathroom, and additional storage options.

Great Bentley is renowned for its picturesque setting and strong community spirit, highlighted by the largest village green in England,

which is perfect for leisurely walks. The village also offers easy access to the beautiful Essex coastline and excellent transport links, including a railway station with direct services to London. Local amenities include shops, pubs, and a primary school.

This Kiswick home at Ufford Chase combines modern comfort with the charm of village life, making it an ideal choice for those seeking a balanced lifestyle in a sought-after Essex location.

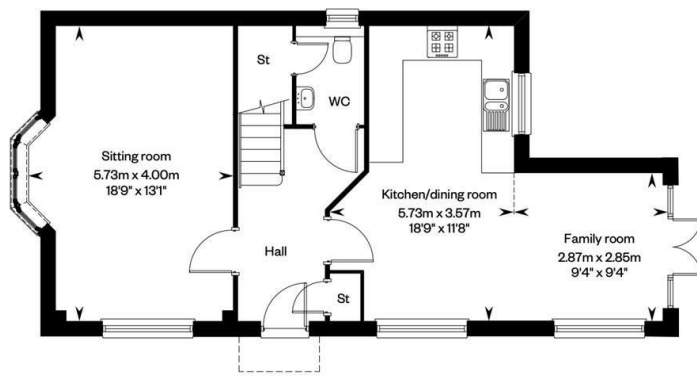
Completion Due Spring 2025

Important Notice: The images presented in this property description depict a different plot and are intended for illustrative purposes only. CGI furniture has been utilized in these visuals to enhance the representation of potential interior layouts. Actual features, dimensions, and furnishings may vary. Prospective buyers are encouraged to visit the property in person for an accurate assessment.

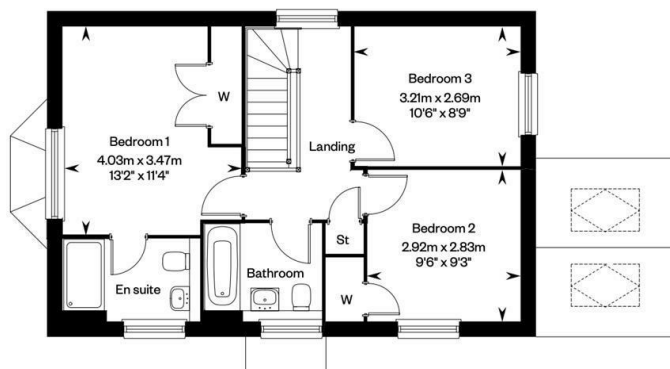








Ground floor



First floor

Local Authority:

Tenure:
Freehold

Council Tax Band:
New Build

Energy Efficiency Rating

	Current	Potential
Very energy efficient - lower running costs		
(92 plus) A		
(81-91) B		
(69-80) C		
(55-68) D		
(39-54) E		
(21-38) F		
(1-20) G		
Not energy efficient - higher running costs		
England & Wales	EU Directive 2002/91/EC	

Agents Note: Whilst every care has been taken to prepare these particulars, they are for guidance purposes only. All measurements are approximate and are for general guidance purposes only and whilst every care has been taken to ensure their accuracy, they should not be relied upon.

Oakheart Colchester
01206 803 308
colchester@oakheart.co.uk
2b Cotman Road, Colchester, Essex, CO3 4QJ

oakheart