

oakheart

£700,000

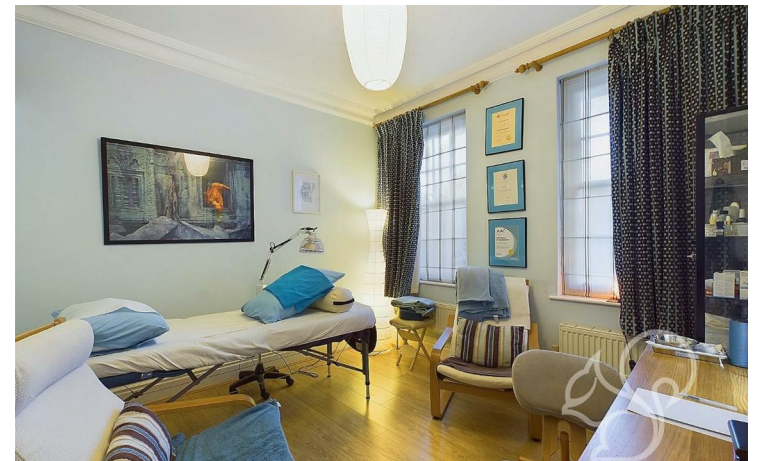
Lexden Road, Lexden



This exquisite four-bedroom townhouse, located in the prestigious Sovereign Crescent, off Lexden Road, offers a perfect blend of Regency-inspired architecture and modern-day comfort. Situated in the highly sought-after Lexden area, it benefits from proximity to Colchester City Centre and access to high-performing state and private schools.

Built in 1998 on the historic site of the former Colchester Maternity Hospital, Sovereign Crescent is a distinguished row of 14 three-storey homes, thoughtfully designed by Classic New Homes. Renowned for their ability to emulate period properties, the developers created a crescent reminiscent of the sweeping architectural grandeur seen in Bath and London. The homes feature ornate

stucco facades and Regency-style balconies, complemented by intricate interior details such as high ceilings, skirting boards, architraves, and cornices, all designed to reflect the elegance of the era.









54.79 ft²

GIRAFFE 360