

oakheart



£1,500 Per Month

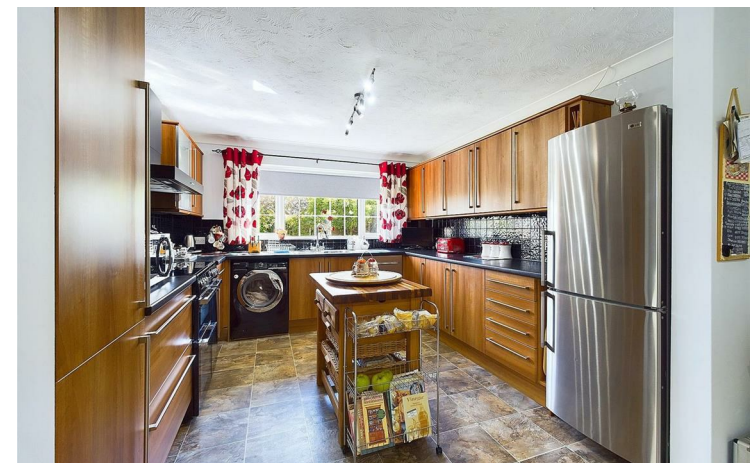
Per Month

Lawns Close, West Mersea

Located in the sought-after coastal town of West Mersea, this spacious three-bedroom detached bungalow offers comfortable and stylish living. The property features a large living room, perfect for relaxation or entertaining, and a bright conservatory that overlooks the garden, providing an ideal spot to enjoy views over the garden.

The modern kitchen/diner is fully equipped, offering plenty of space for family meals and gatherings. The bungalow includes three generously sized double bedrooms, with the master bedroom featuring an ensuite for added convenience. A well-appointed family bathroom serves the other bedrooms. The property also offers ample off-road parking and a garage.

Set in the picturesque West Mersea, this property is perfect for those seeking a tranquil lifestyle close to the sea, while still enjoying modern amenities in a peaceful setting. Ideal for families or professionals looking for a charming coastal home.

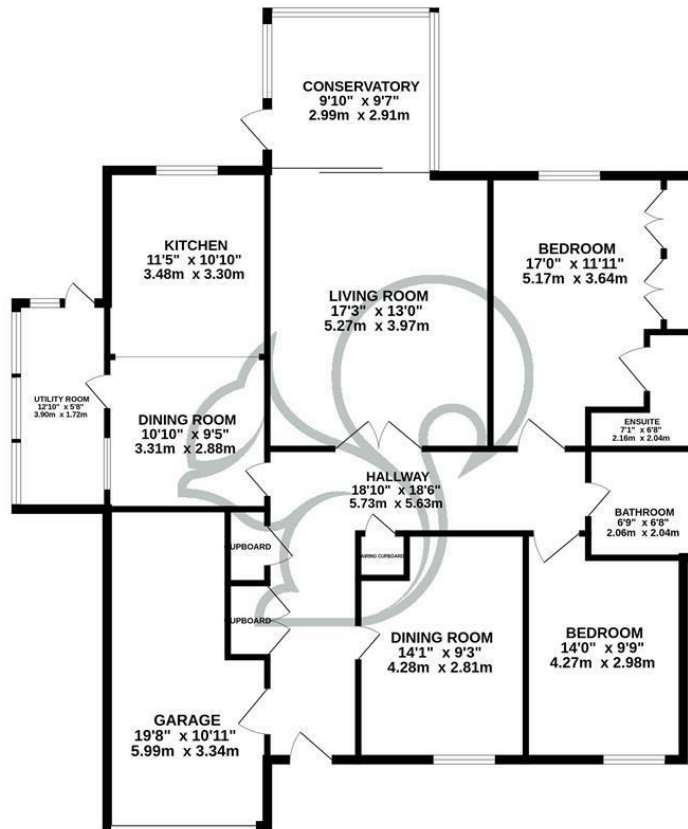








GROUND FLOOR
1536 sq.ft. (142.7 sq.m.) approx.



TOTAL FLOOR AREA: 1536 sq.ft. (142.7 sq.m.) approx.

Whilst every attempt has been made to ensure the accuracy of the floorplan contained here, measurements of doors, windows, rooms and any other items are approximate and no responsibility is taken for any error, omission or mis-statement. This plan is for illustrative purposes only and should be used as such by any prospective purchaser. The services, systems and appliances shown have not been tested and no guarantee is given as to their operability or efficiency can be given.
Made with Metropix ©2023

Local Authority:

Tenure:

Council Tax Band:

D

Energy Efficiency Rating

	Current	Potential
Very energy efficient - lower running costs		
(92 plus) A		
(81-91) B		
(69-80) C		74
(55-68) D		
(39-54) E	40	
(21-38) F		
(1-20) G		
Not energy efficient - higher running costs		
England & Wales	EU Directive 2002/91/EC	

Agents Note: Whilst every care has been taken to prepare these particulars, they are for guidance purposes only. All measurements are approximate and are for general guidance purposes only and whilst every care has been taken to ensure their accuracy, they should not be relied upon.

Oakheart Lettings
01206 803 303
lettings@oakheartproperty.co.uk
2b Cotman Road, Colchester, Essex, CO3 4QJ

oakheart