

oakheart

£86,250

Asking Price

Regina Road, Chelmsford



Shared ownership property being sold at 25% share with a full value of £345,000.

Welcome to this stunning top-floor apartment located in the highly sought-after development on Regina Road, CM1. Just moments away from Chelmsford City Centre and the railway station, this property offers the perfect blend of convenience and modern living.

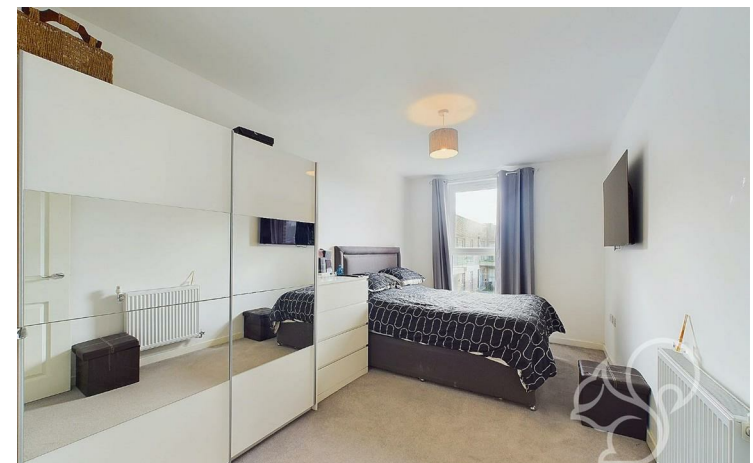
The apartment features two spacious double bedrooms, with the primary bedroom boasting an en-suite bathroom for added privacy and comfort. A well-appointed family bathroom serves the second

bedroom and guests. The entrance hall provides access to all rooms, leading you into an open-plan kitchen and living area that is perfect for both relaxation and entertaining. This space extends to a generous private balcony, offering views over the communal gardens and beyond.

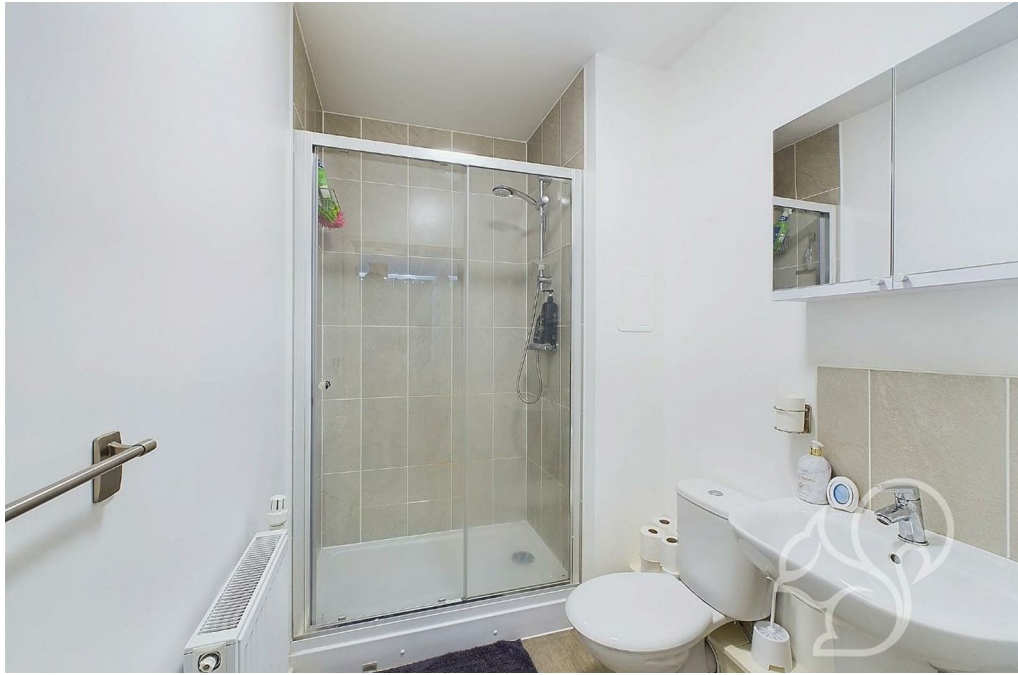
Additional features of this property include electric-fired central heating, an allocated parking space, an entry-phone system, and lift access to all floors. Notably, there is no ground rent payable, adding to the appeal of this residence.

Superbly located, this apartment is in close proximity to the Riverside Leisure Centre, retail parks, a variety of restaurants and public houses, and scenic riverside walks leading into the city center. For commuters, Chelmsford rail station provides excellent connectivity, including a mainline connection to Liverpool Street, London.

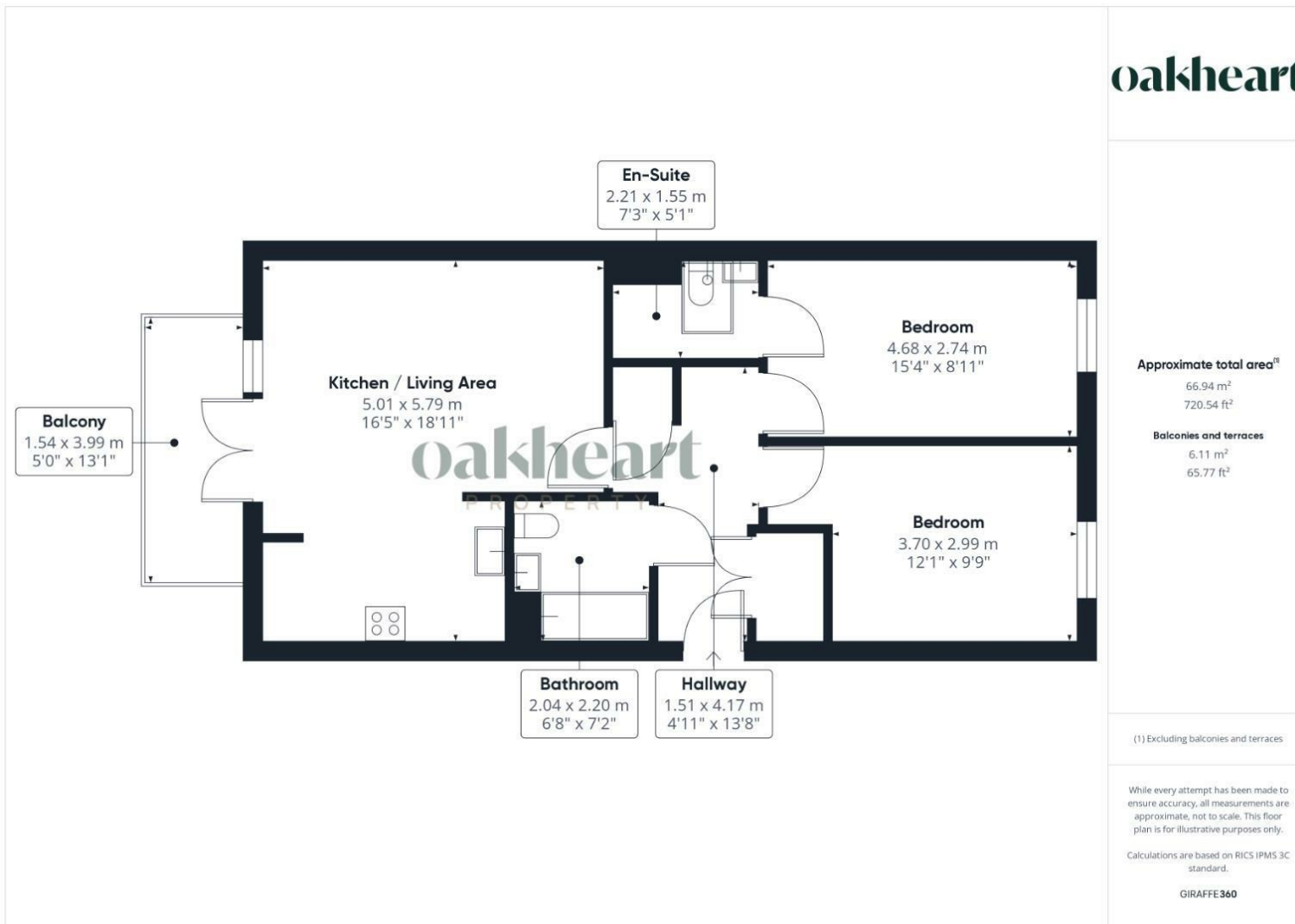
This apartment is an ideal choice for first-time buyers looking for a prime location with modern amenities. Don't miss the opportunity to make this exceptional property your new home.












Local Authority:
Chelmsford City Council

Tenure:
Leasehold

Council Tax Band:
D

Energy Efficiency Rating

	Current	Potential
<i>Very energy efficient - lower running costs</i>		
(92 plus) A		
(81-91) B	83	83
(69-80) C		
(55-68) D		
(39-54) E		
(21-38) F		
(1-20) G		
<i>Not energy efficient - higher running costs</i>		
England & Wales	EU Directive 2002/91/EC 	

Agents Note: Whilst every care has been taken to prepare these particulars, they are for guidance purposes only. All measurements are approximate and are for general guidance purposes only and whilst every care has been taken to ensure their accuracy, they should not be relied upon.