

oakheart

£2,000 Per Month

Per Month

Nuthatch Chase, Colchester



A spacious and stylish four-bedroom house which is situated in the popular and highly sought after area of Stanway. The property offers a comfortable and inviting atmosphere, boasting a range of desirable features. The property is situated just a stones throw from the Stane park, Tollgate retail park and convenient access to the A12 and Marks Tey train station.

Upon entering, you'll be greeted by a generous lounge, providing ample space for relaxation and entertainment. Adjacent to the

lounge is a modern fitted kitchen/diner, featuring some integrated appliances and double doors which lead out to the garden. The downstairs is completed with a WC.

There are two sizeable double bedrooms, both complete with fitted wardrobes and ensuite bathrooms. In addition to the larger bedrooms, the property also boasts two smaller double bedrooms, suitable for a variety of uses such as home offices, guest rooms, or children's bedrooms. Completing the

accommodation is a well-appointed family bathroom. Externally there is an enclosed rear garden, off street parking and a garage which contains a multi gym machine.

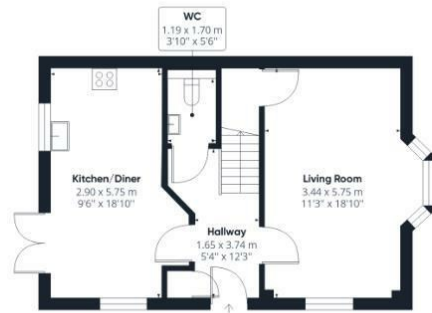
Throughout the house, attention to detail and modern finishes create a contemporary and comfortable living environment. With its spacious layout and thoughtful design, this four-bedroom house provides the ideal backdrop for a fulfilling and convenient lifestyle. Don't miss the opportunity to make this remarkable property your new home. Offered unfurnished and available October, call the Oakheart lettings team for further information.











Ground Floor



Floor 1

Local Authority:

Tenure:

Council Tax Band:

Energy Efficiency Rating

	Current	Potential
Very energy efficient - lower running costs		
(92 plus) A		93
(81-91) B	84	
(69-80) C		
(55-68) D		
(39-54) E		
(21-38) F		
(1-20) G		
Not energy efficient - higher running costs		
England & Wales	EU Directive 2002/91/EC	

Agents Note: Whilst every care has been taken to prepare these particulars, they are for guidance purposes only. All measurements are approximate and are for general guidance purposes only and whilst every care has been taken to ensure their accuracy, they should not be relied upon.

Oakheart Lettings - Colchester
01206 803 303
lettings@oakheartproperty.co.uk
2b Cotman Road, Colchester, Essex, CO3 4QJ

oakheart