

oakheart

£180,000

Guide Price
Ash Way, Colchester

Guide Price: £180,000 - £190,000.

This spacious and newly renovated two-bedroom first-floor apartment, just off Straight Road, is presented to the market with no onward chain. Ideal for first-time buyers and investors alike, this move-in-ready property offers both convenience and comfort.

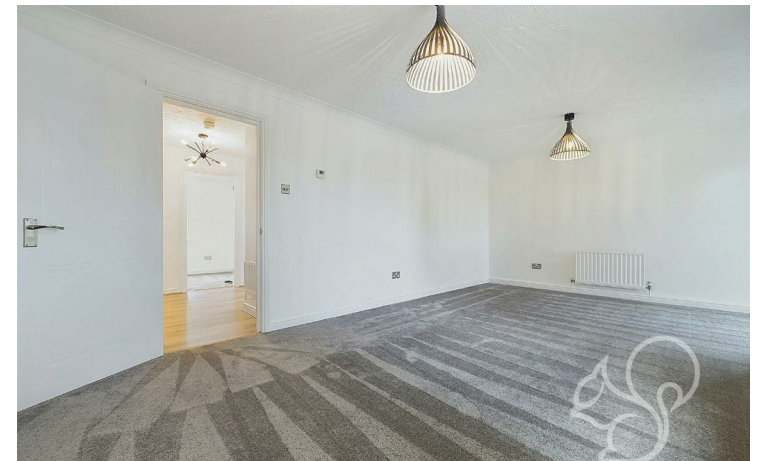
The apartment features a generous entrance hall,

providing access to all main rooms and a useful storage cupboard. The expansive lounge/diner includes a Juliette balcony and an additional side window, creating a bright and airy atmosphere. The separate kitchen has been completely refurbished with new countertops, cupboards an electric oven with an extractor fan, and space for additional appliances.

Both bedrooms are double-sized and come with side

windows, ensuring plenty of natural light. The bathroom is fitted with a three-piece suite, including a bath with an overhead shower, a W/C, and a hand wash basin, along with access to the airing cupboard for extra storage.

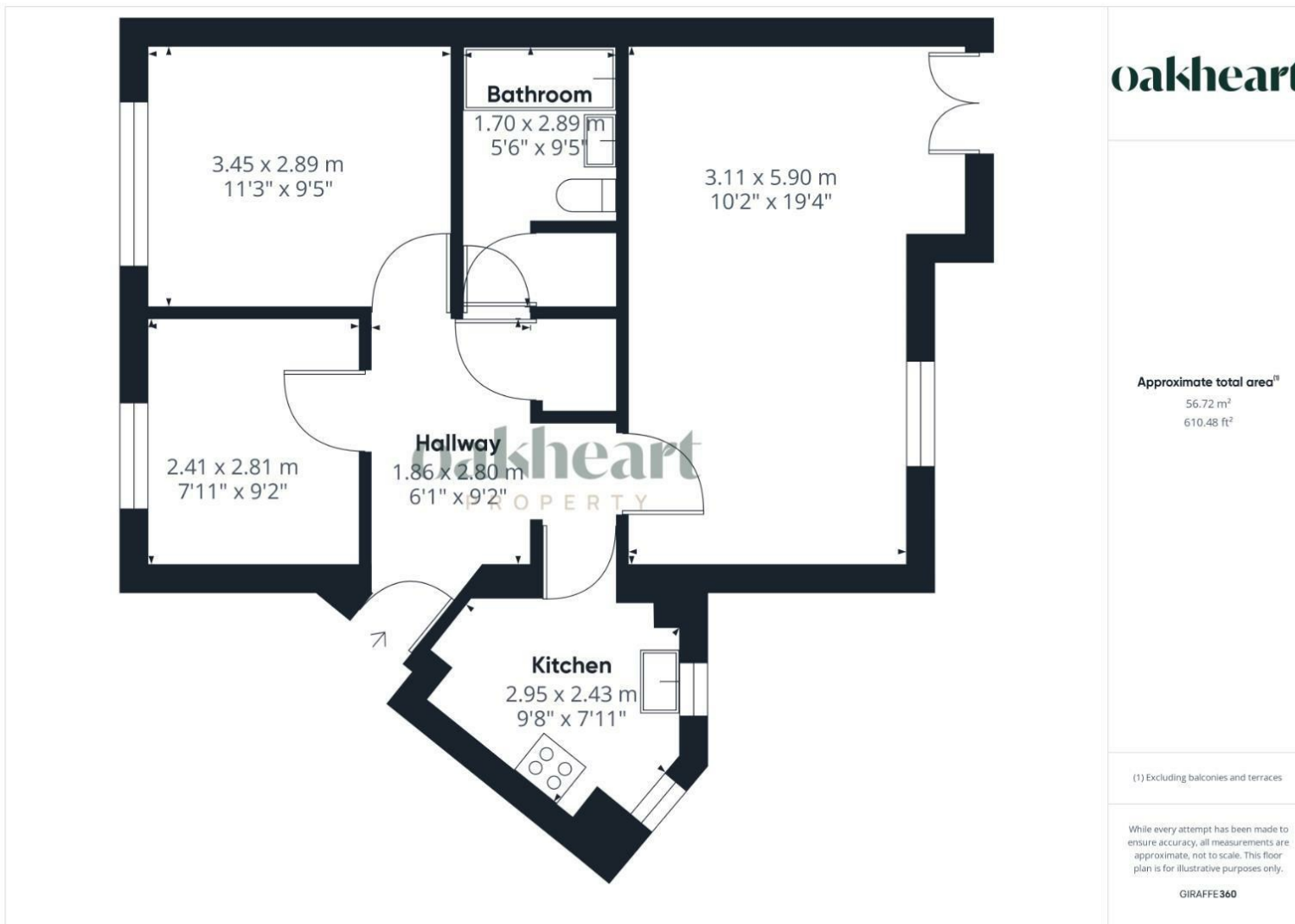
There is also access to a communal garden, and an allocated parking space.







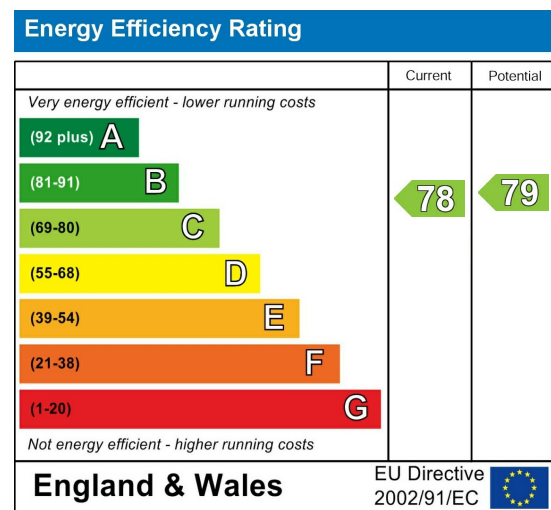




Local Authority:
Colchester

Tenure:
Leasehold

Council Tax Band:
B



Agents Note: Whilst every care has been taken to prepare these particulars, they are for guidance purposes only. All measurements are approximate and are for general guidance purposes only and whilst every care has been taken to ensure their accuracy, they should not be relied upon.