

oakheart

£349,950

Plot 26, Cinderpath Way, Great Bentley

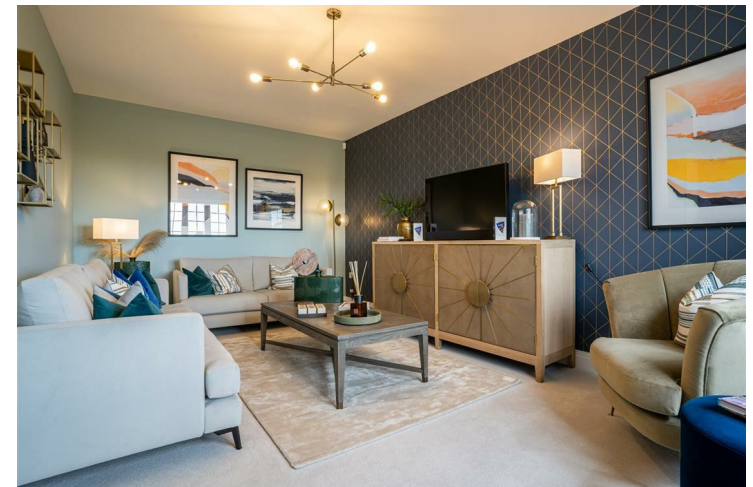
Part-Exchange
available



**** PART EXCHANGE AVAILABLE**** A beautifully designed 3 bedroom semi-detached home situated in the stunning village of Gt Bentley. Spanning approximately 962 square feet, this spacious family residence boasts a generous sitting room, perfect for relaxing, along with an open-plan kitchen and dining area that seamlessly flows out to the private rear garden through French doors. Upstairs, the

master bedroom enjoys the luxury of an en-suite bathroom and fitted wardrobes, while two further well-proportioned bedrooms and a family bathroom complete the sleeping quarters. Practical features such as a garage and off-street parking add to the appeal of this thoughtfully-crafted home, which effortlessly blends traditional design elements with contemporary comfort and convenience.

*Images depicted are of a show home, a different house type.





MONDAY
STREET DANCE

TUESDAY
SWIMMING - GREAT TRY

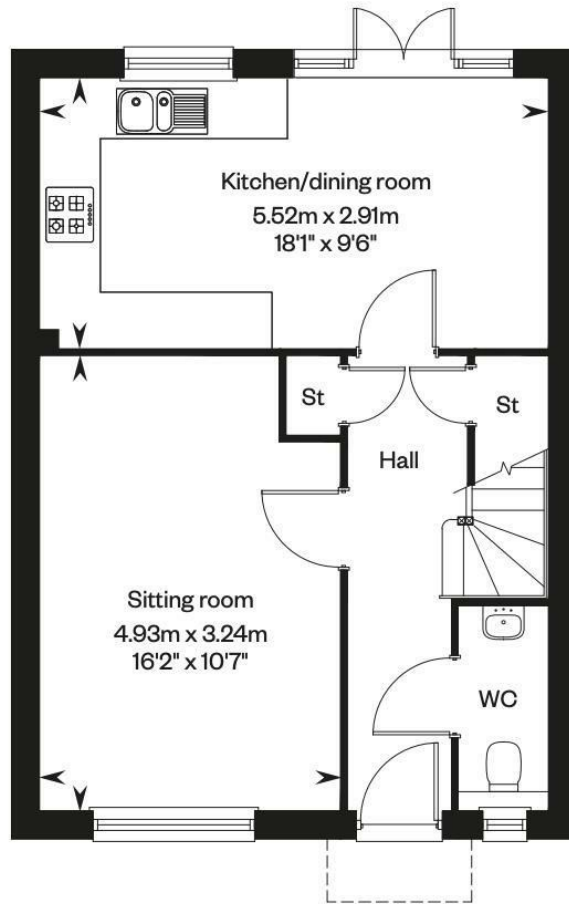
WEDNESDAY
CRICKET MATCH @ THE JOSSWOOD

THURSDAY
PUPPY TRAINING

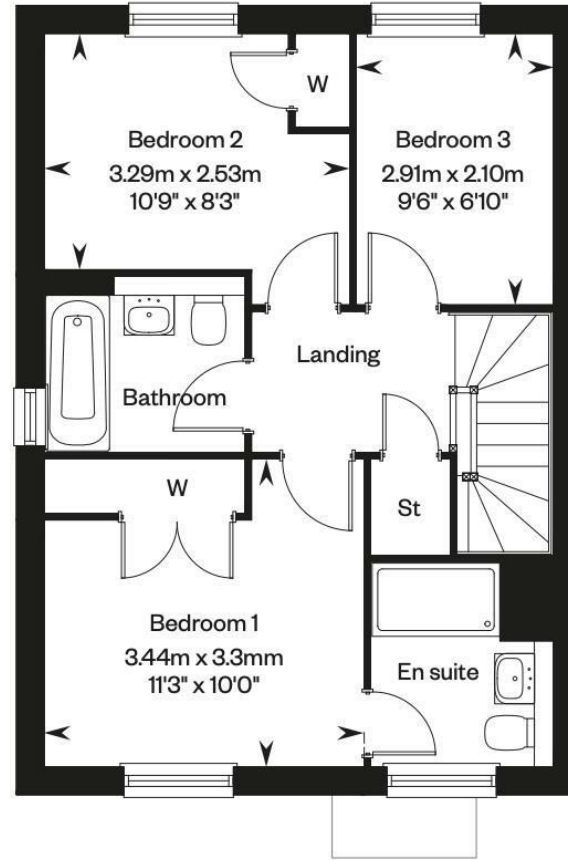
FRIDAY
PIZZA NIGHT

WEEKEND
SAM'S PARTY





Ground floor




First floor

Local Authority:
Colchester

Tenure:
Freehold

Council Tax Band:
New Build

Energy Efficiency Rating

	Current	Potential
<i>Very energy efficient - lower running costs</i>		
(92 plus) A		
(81-91) B		
(69-80) C		
(55-68) D		
(39-54) E		
(21-38) F		
(1-20) G		
<i>Not energy efficient - higher running costs</i>		
England & Wales	EU Directive 2002/91/EC 	

Agents Note: Whilst every care has been taken to prepare these particulars, they are for guidance purposes only. All measurements are approximate and are for general guidance purposes only and whilst every care has been taken to ensure their accuracy, they should not be relied upon.

Oakheart Colchester
01206 803 308
colchester@oakheartproperty.co.uk
2b Cotman Road, Colchester, Essex, CO3 4QJ

oakheart