

oakheart

£600,000

Guide Price
The Orchard, Heybridge, Maldon



Guide Price £600,000. - £650,000.

Welcome to this charming and idyllic residence nestled in the picturesque village of Maldon renowned for its quaint charm and historic significance. This four-bedroom detached home is situated in a quiet cul-de-sac, offering a perfect blend of tranquility and accessibility.

The village itself is a delightful canvas of cobblestone streets and period architecture, boasting a range of boutique shops, inviting restaurants, and cozy pubs. Steeped in history and known for its association with the production of sea salt, the surroundings of the property are sure to captivate with their timeless appeal.

As you step into this elegant residence, you are greeted by a warm and inviting ambiance. The hub of the home is undoubtedly the dining family room, designed to be the focal point for family gatherings and intimate dinners. The high specification kitchen, equipped with modern amenities, provides the perfect space for culinary enthusiasts to unleash their creativity.

The property features four well-appointed bedrooms, offering ample space for a growing family or accommodating guests. The principal bedroom is a haven of comfort, complete with a walk-in wardrobe and an ensuite bathroom, providing a private retreat within the home.

The attention to detail and high-quality finishes throughout the property

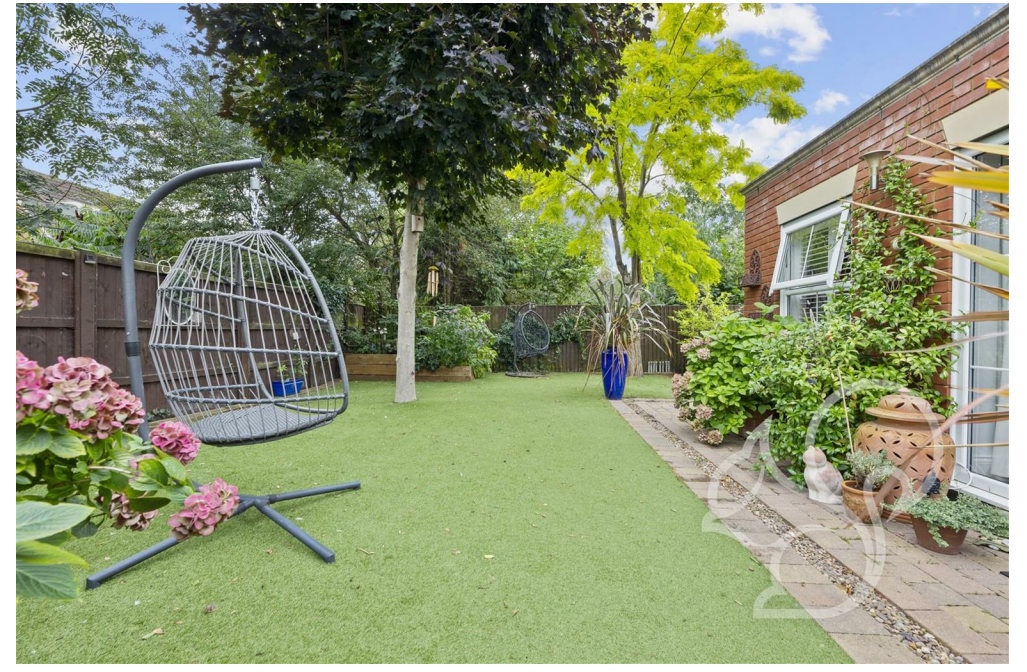
reflect a commitment to luxury and style. The well-maintained garden surrounding the home provides a peaceful outdoor space for relaxation and entertaining.

In summary, this property is not just a residence; it's a lifestyle. Experience the best of village living in a home that seamlessly combines modern comfort with the timeless charm of its surroundings. This property is an opportunity to embrace the tranquil essence of village life while enjoying the convenience of a well-appointed and meticulously designed home.

For an internal inspection please call Oakheart on 01206 382191.









TOBAGO
PORTUGAL
CORNWALL
TENERIFE
JERSEY
THE LION
CHELMSFORD
BRENTWOOD
WEST HALLING
ECLIPSE



Local Authority:

Maldon

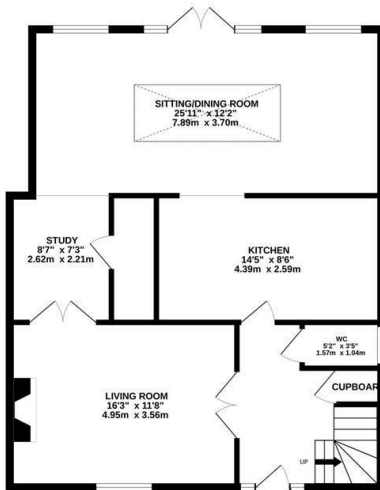
Tenure:

Freehold

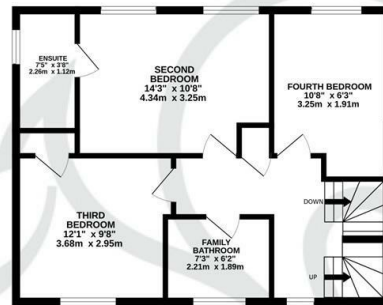
Council Tax Band:

F

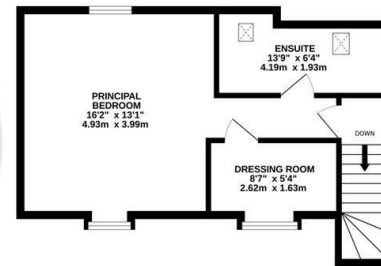
GROUND FLOOR
878 sq.ft. (81.6 sq.m.) approx.



1ST FLOOR
576 sq.ft. (53.5 sq.m.) approx.



2ND FLOOR
416 sq.ft. (38.6 sq.m.) approx.



TOTAL FLOOR AREA : 17664sq.ft. (1641.0 sq.m.) approx.

Whilst every attempt has been made to ensure the accuracy of the floorplan contained here, measurements of doors, windows, rooms and any other items are approximate and no responsibility is taken for any error, omission or mis-statement. This plan is for illustrative purposes only and should be used as such by any prospective purchaser. The services, systems and appliances shown have not been tested and no guarantee as to their operability or efficiency can be given.
Made with Metropix ©2023

Energy Efficiency Rating

	Current	Potential
Very energy efficient - lower running costs		
(92 plus) A		
(81-91) B		
(69-80) C	73	80
(55-68) D		
(39-54) E		
(21-38) F		
(1-20) G		
Not energy efficient - higher running costs		
England & Wales	EU Directive 2002/91/EC	

Agents Note: Whilst every care has been taken to prepare these particulars, they are for guidance purposes only. All measurements are approximate and are for general guidance purposes only and whilst every care has been taken to ensure their accuracy, they should not be relied upon.

Oakheart Chelmsford

01245808119

chelmsford@oakheartproperty.co.uk

20 Victoria Road, Chelmsford, Essex, CM1 1GP

oakheart