

oakheart

£1,000 Per Month

Per Month

Queens Corner, West Mersea





Situated in the highly sought-after West Mersea, this delightful one-bedroom cottage offers a perfect blend of character and comfort. Situated nearby to local shops and the beach, this property presents an ideal opportunity for those seeking tranquillity without compromising on convenience.

Upon entering, you are greeted by a warm and inviting living space, adorned with exposed wooden beams and a log-burning fire, creating a cosy ambience that welcomes you home. The living room seamlessly connects to a compact yet functional kitchen, equipped with some appliances and a downstairs WC. Through the kitchen,

there is a good-sized conservatory which leads out to the rear garden.

The bedroom, boasting ample natural light, provides a serene retreat after a long day, offering a peaceful haven to unwind and rejuvenate. Adjacent to the bedroom, you'll find a tastefully appointed bathroom, complete with contemporary fixtures and fittings and a shower over the bath.

Stepping outside, the cottage boasts a private garden area, perfect for enjoying the fresh coastal air and al fresco dining during the

warmer months. Additionally, off-road parking is available, ensuring hassle-free convenience for residents.

Located in the heart of West Mersea, residents will enjoy easy access to the town's array of amenities, including charming cafes, local shops, and scenic coastal walks. With its idyllic location and characterful charm, this one-bedroom cottage presents an enchanting opportunity to embrace the quintessential coastal lifestyle.





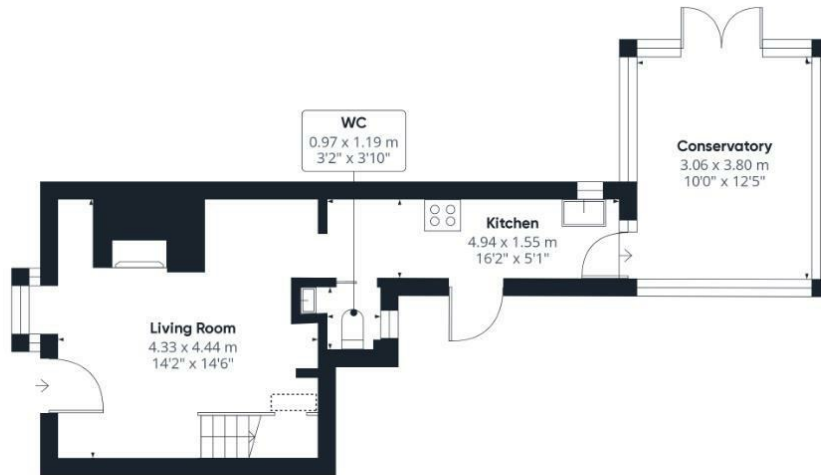












Ground Floor



Floor 1

Local Authority:

£1341

Tenure:

Council Tax Band:

A

Energy Efficiency Rating

	Current	Potential
<i>Very energy efficient - lower running costs</i>		
(92 plus) <b>A</b>		
(81-91) <b>B</b>		
(69-80) <b>C</b>		
(55-68) <b>D</b>		<b>61</b>
(39-54) <b>E</b>	<b>45</b>	
(21-38) <b>F</b>		
(1-20) <b>G</b>		
<i>Not energy efficient - higher running costs</i>		
<b>England &amp; Wales</b>	EU Directive 2002/91/EC	

Agents Note: Whilst every care has been taken to prepare these particulars, they are for guidance purposes only. All measurements are approximate and are for general guidance purposes only and whilst every care has been taken to ensure their accuracy, they should not be relied upon.

Oakheart Lettings - Colchester  
 01206 803 303  
 lettings@oakheartproperty.co.uk  
 2b Cotman Road, Colchester, Essex, CO3 4QJ

**oakheart**