

oakheart



£1,300 Per Month

Per Month

Drumlin Drive, Creting St. Mary,  
Ipswich





A high specification, two-bedroom detached bungalow which is situated in the brand new 'Alder Meadow' development by Redbourne Homes. Located in a small village, nestled in the heart of Suffolk, it is conveniently placed between the A14 and the A140, providing easy access to the town of Ipswich and the nearby cities of Cambridge and Norwich. The local train station is a mere 7-minute drive away in the small town of Needham Market, with trains to London taking roughly 1 hour 20

minutes. The second closest station is a 10-minute drive in the opposite direction in the nearby town of Stowmarket.

The accommodation features a stylish fitted kitchen with a range of AEG/Lamona appliances, the kitchen sits within a large open plan living space with plenty of room to entertain and with double doors leading out to the rear garden. There are two double bedrooms and a

modern shower room with a walk-in shower. Externally there is an enclosed rear garden and off-road parking on the driveway and within the garage.

The property is offered unfurnished and is available for occupancy at the end of August. Call the Oakheart lettings team for further information.

Agent Note: The garden area is still under construction and will be completed by the availability date.

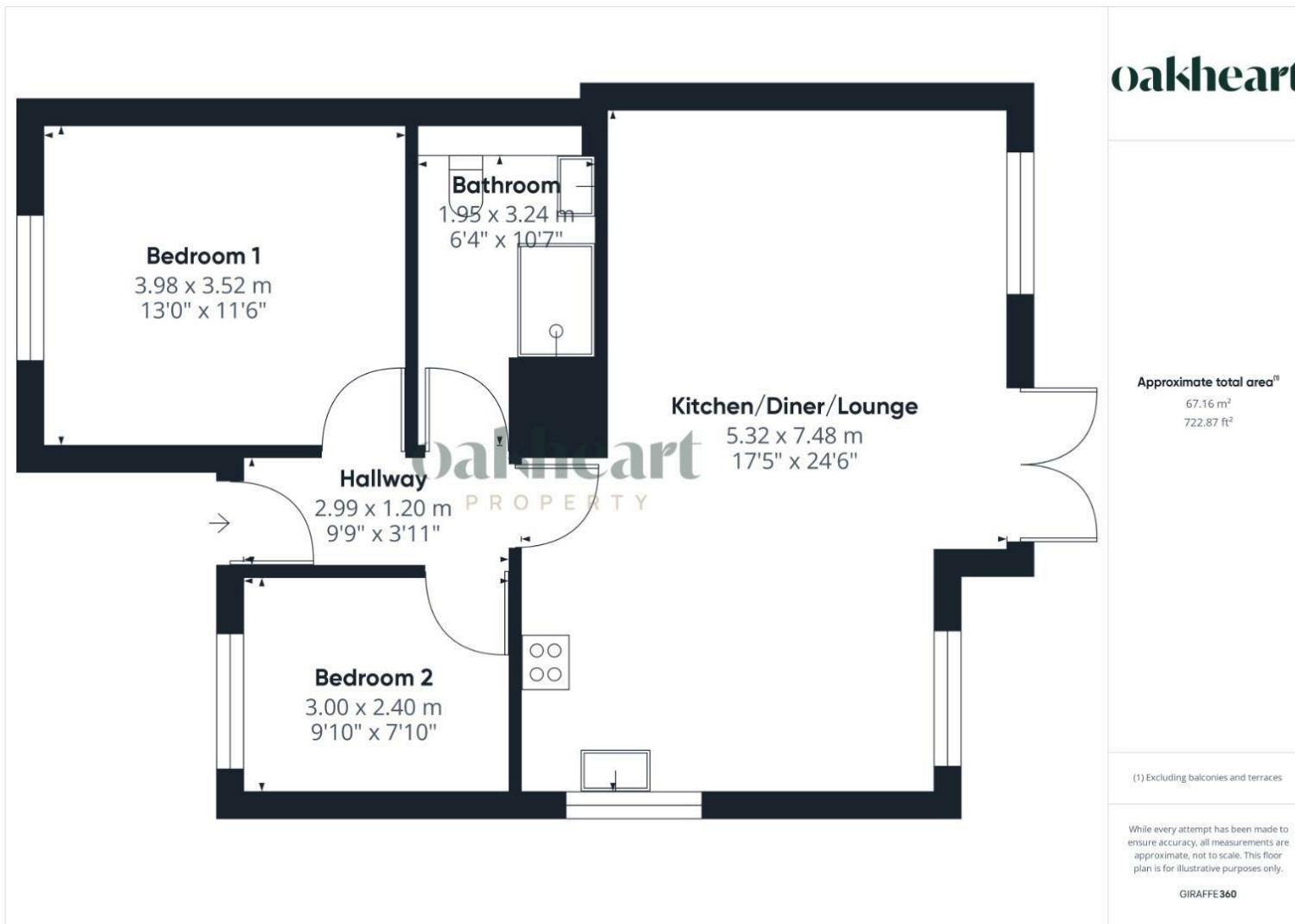













**oakheart**

Local Authority:  
Tenure:  
Council Tax Band:

**Energy Efficiency Rating**

	Current	Potential
<i>Very energy efficient - lower running costs</i>		
(92 plus) <b>A</b>		
(81-91) <b>B</b>		
(69-80) <b>C</b>		
(55-68) <b>D</b>		
(39-54) <b>E</b>		
(21-38) <b>F</b>		
(1-20) <b>G</b>		
<i>Not energy efficient - higher running costs</i>		
<b>England &amp; Wales</b>	EU Directive 2002/91/EC 	

Agents Note: Whilst every care has been taken to prepare these particulars, they are for guidance purposes only. All measurements are approximate and are for general guidance purposes only and whilst every care has been taken to ensure their accuracy, they should not be relied upon.