



oakheart

£4,950 Per Month

Per Month

Nine Ashes Road, Nine Ashes,
Ingatstone

Welcome to this exceptional countryside family home. Nestled amidst picturesque landscapes, this property offers a serene and tranquil living experience, perfect for those seeking a peaceful escape from the hustle and bustle of everyday life. The property is situated just under 8 miles from Brentwood, 5 miles from Ingatestone and 10 miles from Chelmsford offering a host of amenities, attractions and local points of interest.

The property boasts an impressive four double bedrooms, providing ample space for families or those who enjoy hosting guests. The downstairs accommodation features a large and impressive

kitchen/diner which is equipped with some integrated appliances. There are two large living rooms, a spacious home office, a downstairs shower room and a large utility room which is equipped with ample storage and a WC.

The bedrooms are tastefully appointed, offering an ideal balance of comfort and style. The en-suite master bedroom is a true sanctuary, complete with an ensuite shower room and separate walk-in dressing room which is fully equipped with fitted wardrobes. In addition to the master bedroom there are two good-sized double bedrooms on the first floor, whilst the fourth bedroom is located on the second floor

and is equipped with an ensuite bathroom. In addition, there is a large family bathroom which services the two bedrooms.

The property's grounds are a true delight, featuring beautifully landscaped gardens, a double garage and additional storage within the cart lodge. The property sits at the end of a long driveway and is positioned behind electric gates for privacy. Offered unfurnished and available immediately, call the Oakheart lettings team for further information.







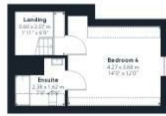




Ground Floor



Floor 1



Floor 2

Local Authority:

Tenure:

Council Tax Band:

F

Energy Efficiency Rating

	Current	Potential
<i>Very energy efficient - lower running costs</i>		
(92 plus) A		
(81-91) B		
(69-80) C		71
(55-68) D	49	
(39-54) E		
(21-38) F		
(1-20) G		
<i>Not energy efficient - higher running costs</i>		
England & Wales	EU Directive 2002/91/EC	

Agents Note: Whilst every care has been taken to prepare these particulars, they are for guidance purposes only. All measurements are approximate and are for general guidance purposes only and whilst every care has been taken to ensure their accuracy, they should not be relied upon.

Oakheart Lettings - Colchester
 01206 803 303
 lettings@oakheartproperty.co.uk
 2b Cotman Road, Colchester, Essex, CO3 4QJ

oakheart